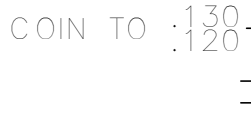
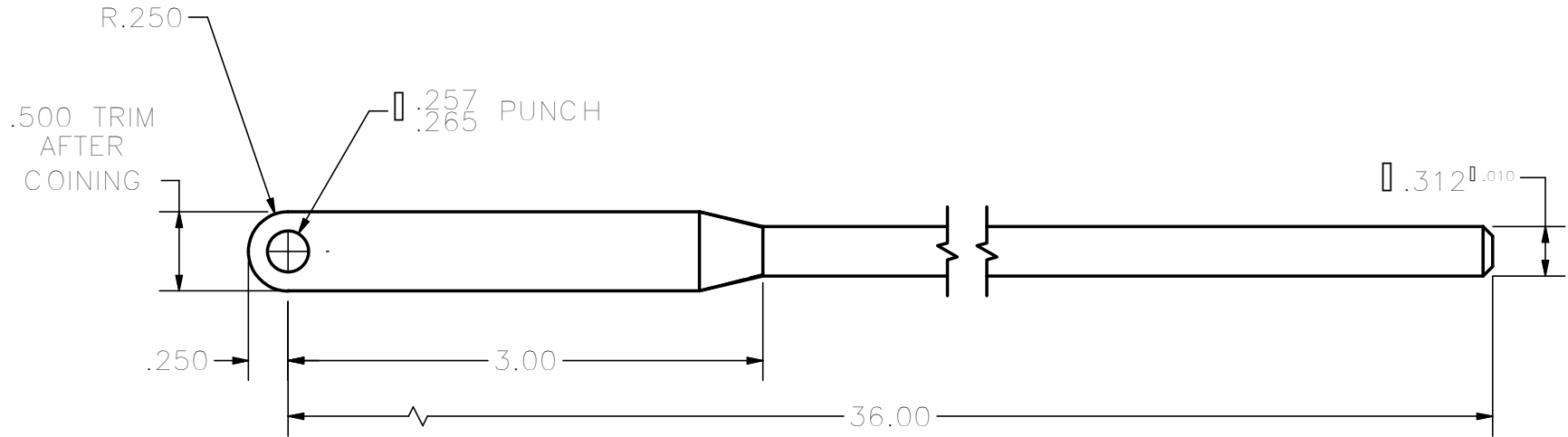


CONFIDENTIAL NOTICE: This drawing and the designs, specifications and engineering information disclosed herein are the property of Eberhard Manufacturing Company and are not to be disseminated or reproduced without express written consent. The drawing is loaned in confidence and then only for consideration of the matter disclosed herein. In accepting loan of this drawing, recipient agrees to keep it and the matter disclosed herein in confidence and not to use nor permit their use in any way detrimental to Eberhard Manufacturing Company, Division of the Eastern Company, 21944 Drake Road, Cleveland, Ohio 44149-9712 © 2013 EBERHARD MFG. CO.



HAND GRIND
.06 X 45°
CHAMFER
APPROX.

NOTE: LENGTH OF WIRE TO BE 36.50 RAW CUT.

SUPERSEDES DRAWING AL1-560-5 DATED 12-26-91.

LINEAR MEASURE: INCH UNLESS OTHERWISE SPECIFIED TOLERANCES ARE AS FOLLOWS:			DATE 2/1/2013	EBERHARD MANUFACTURING CO.		NAME ALUMINUM LOCK ROD		
ANGLES: 0.20 0.20 2 PLACE DEC.: 0.03 0.76 3 PLACE DEC.: 0.015 0.38 ALL HOLES: 0.005 0.13			DR. BY FLP	DIVISION OF THE EASTERN COMPANY CLEVELAND, OHIO 44149-9712		MATERIAL 6063-T4 ALUMINUM		
REVISED, REDRAWN AND CONVERTED TO 3D			EN	2-1-13	THIS DOCUMENT IS IN ACCORDANCE WITH ASME Y14.15-2009			PART NUMBER AL1-560-5
REV	DESCRIPTION	EN	DATE					

C:\Working_Folder\Archive\FASTENER\RODS\AL1-560-5.idw