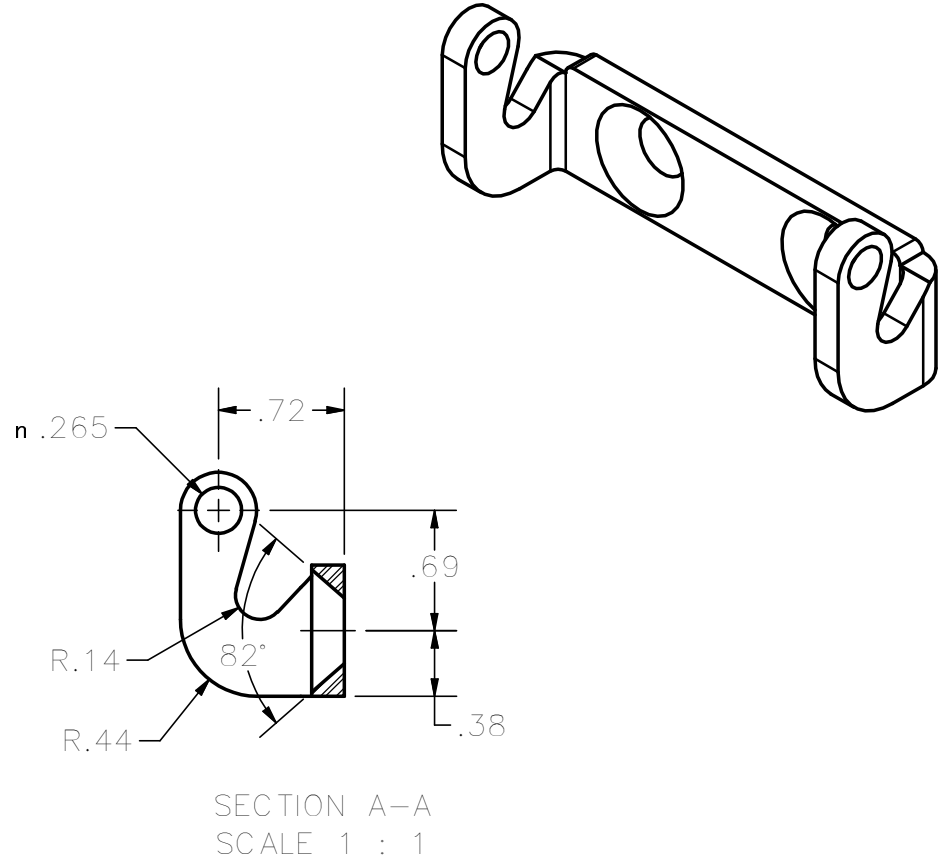
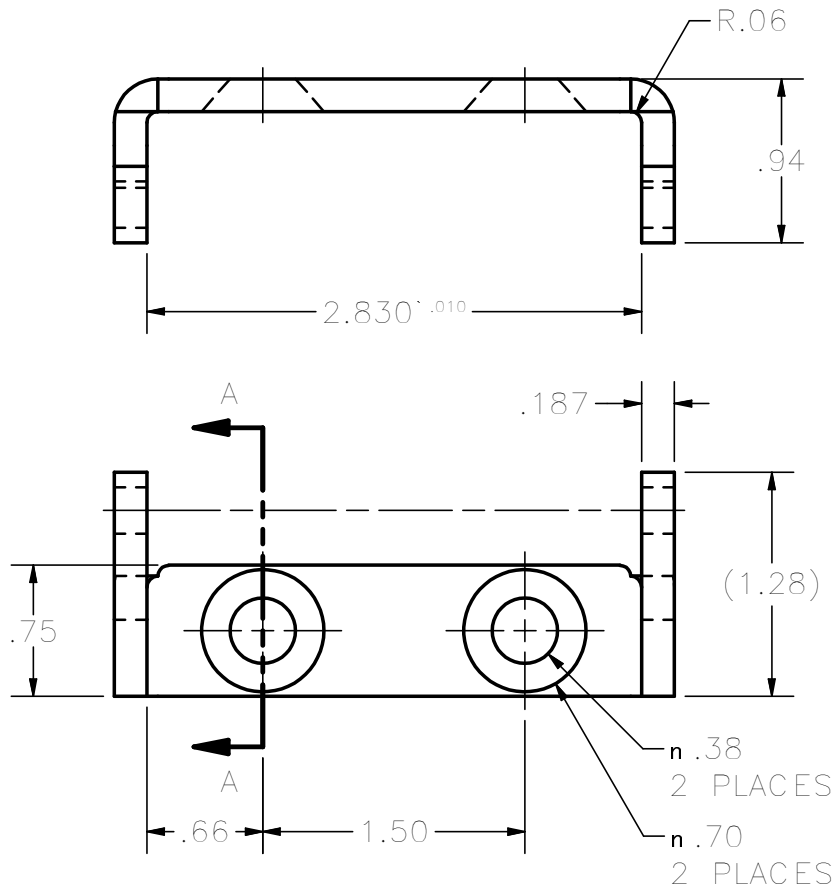


CONFIDENTIAL NOTICE: This drawing and the designs, specifications and engineering information disclosed herein are the property of Eberhard Manufacturing Company and are not to be disseminated or reproduced without express written consent. The drawing is loaned in confidence and then only for consideration of the matter disclosed herein. In accepting loan of this drawing, recipient agrees to keep it and the matter disclosed herein in confidence and not to use nor permit their use in any way detrimental to Eberhard Manufacturing Company, Division of the Eastern Company, 21944 Drake Road, Cleveland, Ohio 44149-9712 © 2011 EBERHARD MFG. CO.



- NOTES:
 1. MATERIAL; 304 STAINLESS STEEL
 2. FINISH: PLAIN, FC (01)

SUPERSEDES DRAWING 71-SS1 DATED 2-25-94.

CUSTOMER PRINT
 SHEET 1 OF 2

UNLESS OTHERWISE SPECIFIED TOLERANCES ARE AS FOLLOWS:				DATE 4/13/2011	EBERHARD MANUFACTURING CO. DIVISION OF THE EASTERN COMPANY CLEVELAND, OHIO 44149-9712	NAME HINGE BUTT	
ANGLES: ∠ 2∠				DR. BY FLP		MATERIAL SEE NOTE	PART NUMBER 71-SS1
2 PLACE DEC.: ∠ .03				SCALE FULL			
3 PLACE DEC.: ∠ .015				CHK. BY			
ALL HOLES: ∠ .005							
REVISION HISTORY							
REV	DESCRIPTION	EN	DATE				
	REVISED AND REDRAWN	EN 5499	4/15/2011				