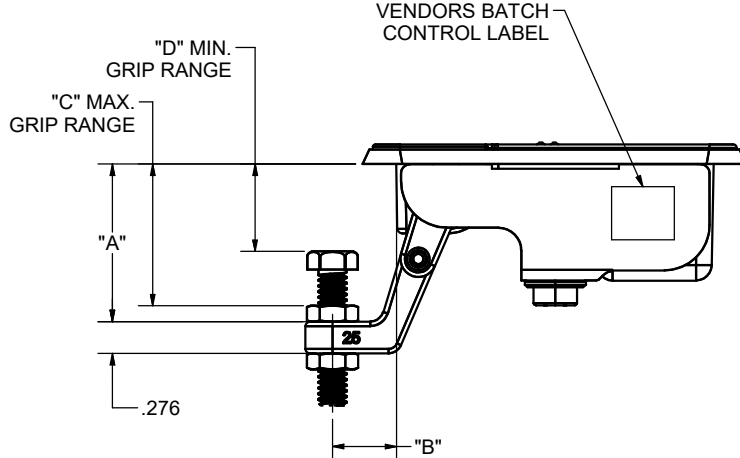
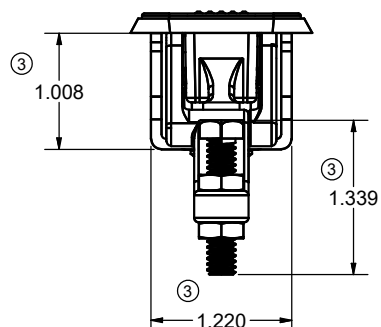
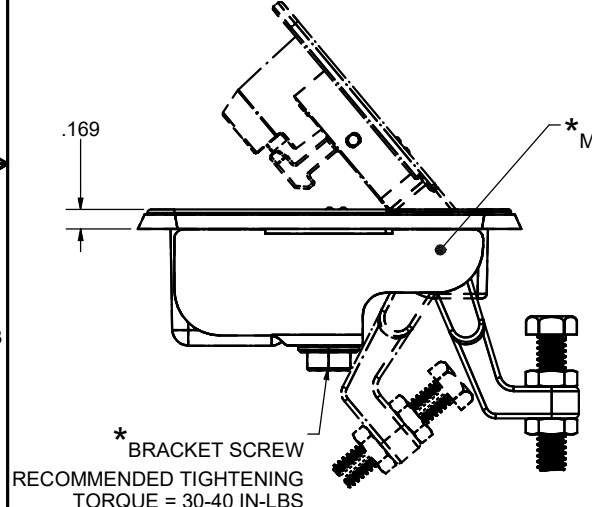
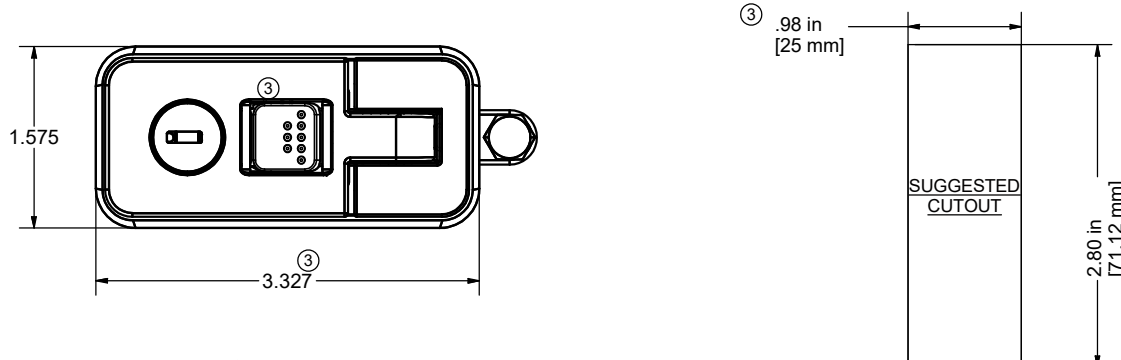


**CONFIDENTIAL NOTICE:** This drawing and the designs, specifications and engineering information disclosed hereon are the property of Eberhard Manufacturing Company and are not to be disseminated or reproduced without express written consent. The drawing is loaned in confidence and then only for consideration of the matter disclosed hereon. In accepting loan of this drawing, recipient agrees to keep it and the matter disclosed hereon in confidence and not to use nor permit their use in any way detrimental to Eberhard Manufacturing Company, Division of the Eastern Company, 21944 Drake Road, Cleveland, Ohio 44149-9712 © 2013 EBERHARD MFG. CO.

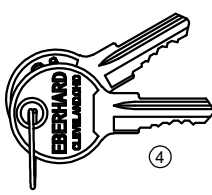
REVISION HISTORY					
REV	DESCRIPTION	EN	DATE	REV BY	APVD BY
	REVISED & REDRAWN TO CHART // REF: PP10454	EN5687	1/18/13		
1	ARM REDESIGNED ASSIGNED NEW #2-734-545-K OBSOLETE P# 1-734-545-K	EN5622	9/20/13		
2	REMOVED PART NUMBER 2-734 FROM CHART	EN 5758	06/24/2016		
3	REVISED CHART, REVISED DIMENSION WAS 1.00 TO .98, WAS 1.32 TO 1.34, WAS 1.21 TO 1.22, WAS 1.02 TO 1.01, WAS 3.41 TO 3.33, REMOVED EBERHARD STAMP ON MOUNTING BRACKET, NEW BUTTON	EN5759	07/01/2016		
4	REVISED VIEW TO DETAIL	5879	11-16-18	FLP	MR

**NOTE:**  
 - FINISH: (30) BLACK POWDER COAT SEMI-GLOSS  
 - AVAILABLE KEY: 545 ONLY  
 - ALL DIMENSIONS ARE FOR REFERENCE ONLY

**\* MOUNTING BRACKET, BRACKET SCREW, KEYS,  
 SHIPPED LOOSE IN SECURE POLY BAG, PLACED IN  
 LARGER POLY BAG WITH TRIGGER LATCH.**



PART NO.	"A"	"B"	"C"	"D"
734-545-K	1.57[40mm]	1.12[28.5mm]	1.18[30mm]	.59[15mm]



KEYS 545  
2 REQ'D

THIS DOCUMENT IS IN ACCORDANCE WITH ASME Y14.15-2009		DATE	1/5/2013
LINEAR MEASURE: INCH		DR BY	K.Braun
UNLESS OTHERWISE SPECIFIED TOLERANCES ARE AS FOLLOWS:		SCALE	FULL
ANGLES:	± 2° ± 2°	CHK BY	
2 PLACE DEC.:	± .03 ± .76		
3 PLACE DEC.:	± .015 ± .38		
ALL HOLES:	± .005 ± .13		

<b>EBERHARD MANUFACTURING CO.</b> DIVISION OF THE EASTERN COMPANY CLEVELAND, OHIO 44149-9712	
<b>TRIGGER LATCH ASSEMBLY LOCKING WITH KEYS</b>	
MATERIAL	PART NUMBER CHART
	<b>734-545-K</b>

CUSTOMER PRINT  
SHEET 1 OF 2

C:\Working\_Folder\Archive\Pro\734\734-545-K CH SH1.dwg