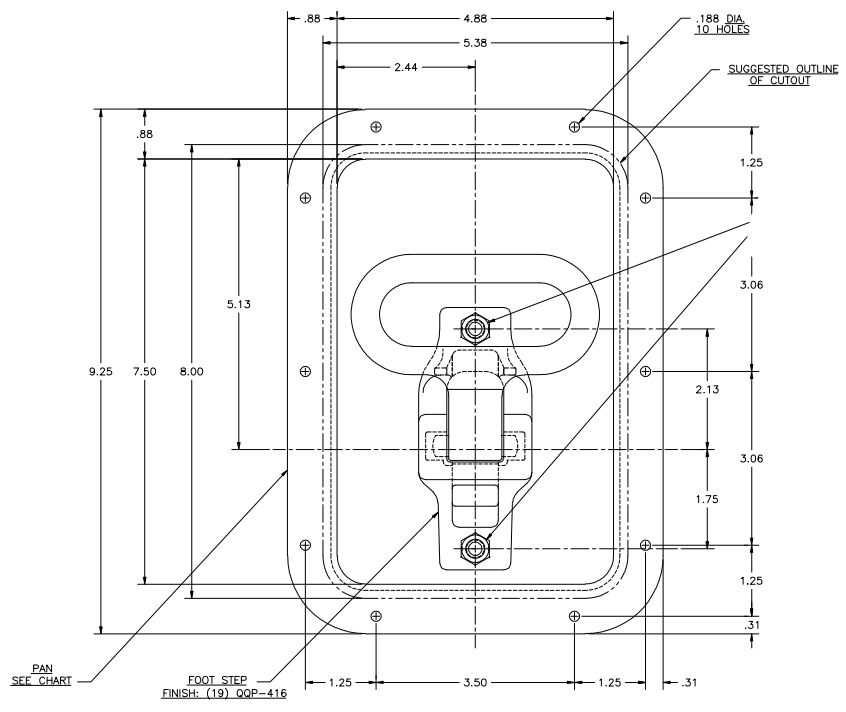
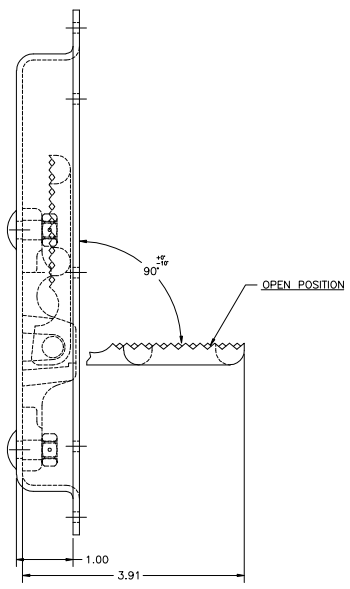
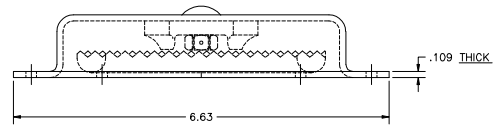
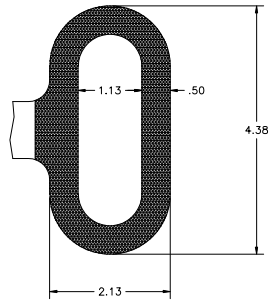


**CONFIDENTIAL NOTICE:** The design and the details, specifications and engineering information disclosed herein are the property of Eberhard Manufacturing Company and are not to be distributed or reproduced without express written consent. The design is hereby disclosed and the use of the drawings is for the sole purpose of the order specified herein. In no event shall the manufacturer be held liable for any loss or damage caused by the use of the drawings or the information disclosed herein. © 2008 Eberhard Mfg. Co.



P/N	FOOT STEP	PAN
AL3-575709 (19) QQP-416	(19) QQP-416	(01) PLAIN
AL3-575709 (82) CHEMICAL COVERSION COAT	(19) QQP-416	(82) CHEMICAL COVERSION COAT

NO.	CHANGE	ENG. NO.	DATE	UNLESS OTHERWISE SPECIFIED TOLERANCES ARE AS FOLLOWS:	12-31-07
REVISION	BY	DATE		FEEL	DATE
				2 PLACE DEC: .003	
				3 PLACE DEC: .0015	
				ALL HOLES: ±.005	

CUSTOMER PRINT  
SHEET 1 OF 2

**EBERHARD MANUFACTURING CO.**  
DIVISION OF  
**THE EASTERN COMPANY**  
CLEVELAND, OHIO 44136-6607

RECESSED FOLDING  
STEP ASSEMBLY

REV. NUMBER: AL3-575709