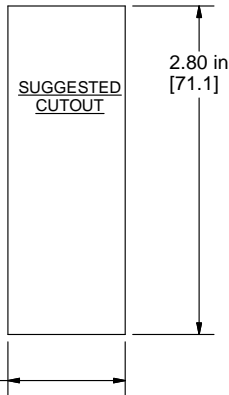
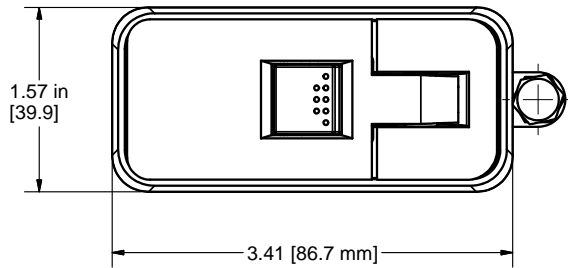


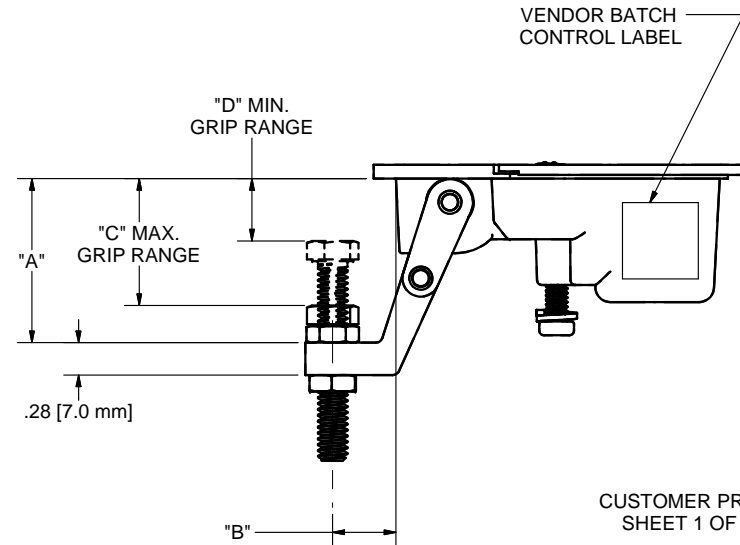
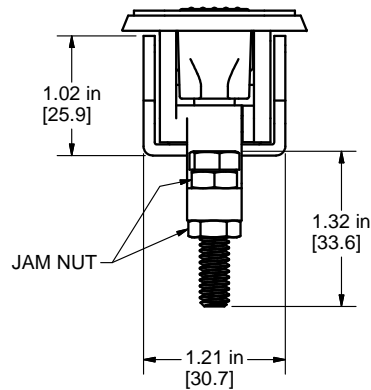
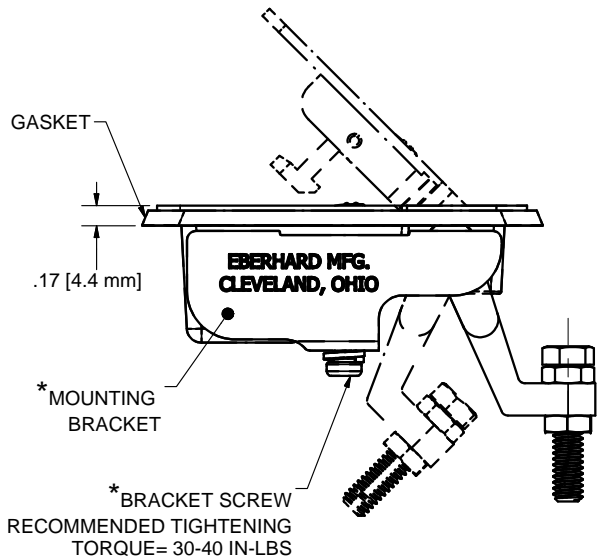
CONFIDENTIAL NOTICE: This drawing and the designs, specifications and engineering information disclosed herein are the property of Eberhard Manufacturing Company and are not to be disseminated or reproduced without express written consent. The drawing is loaned in confidence and then only for consideration of the matter disclosed herein. In accepting loan of this drawing, recipient agrees to keep it and the matter disclosed herein in confidence and not to use nor permit their use in any way detrimental to Eberhard Manufacturing Company, Division of the Eastern Company, 21944 Drake Road, Cleveland, Ohio 44149-9712 © 2013 EBERHARD MFG. CO.

REVISION HISTORY			
REV	DESCRIPTION	EN	DATE
1	REVISOR & REDRAWN TO CHART DRAWING // REF-PP10454	EN5587	1/18/13
1	ARM REDESIGNED ASSIGNED NEW Pw2-734 OBSOLETE Pw 1-734	EN5622	9/20/13



NOTE:
 - FINISH: (30) BLACK POWDER COAT SEMI-GLOSS
 - ALL DIMENSIONS ARE FOR REFERENCE ONLY.

* BRACKET, BRACKET SCREW, SHIPPED LOOSE IN SECURE POLY BAG, PLACED IN LARGER POLY BAG WITH TRIGGER LATCH.



PART NO.	"A"	"B"	"C"	"D"
734	1.54[39.2mm]	1.13[28.8mm]	1.23[31.2mm]	.66[16.8mm]
2-734	1.40[35.5mm]	.54[13.7mm]	1.08[27.5mm]	.53[13.5mm]

THIS DOCUMENT IS IN ACCORDANCE WITH ASME Y14.15-2009		DATE	1/7/2013
UNLESS OTHERWISE SPECIFIED TOLERANCES ARE AS FOLLOWS:		DR. BY	K. Braun
LINEAR MEASURE: INCH		SCALE	
IN MM		CHK. BY	
ANGLES:	± 2 ± 2		
2 PLACE DEC.:	± .03 ± .76		
3 PLACE DEC.:	± .015 ± .38		
ALL HOLES:	± .005 ± .13		

EBERHARD MANUFACTURING CO. DIVISION OF THE EASTERN COMPANY CLEVELAND, OHIO 44149-9712		
NAME TRIGGER LATCH ASSEMBLY, NON-LOCKING		
MATERIAL	PART NUMBER	CHART
	734	