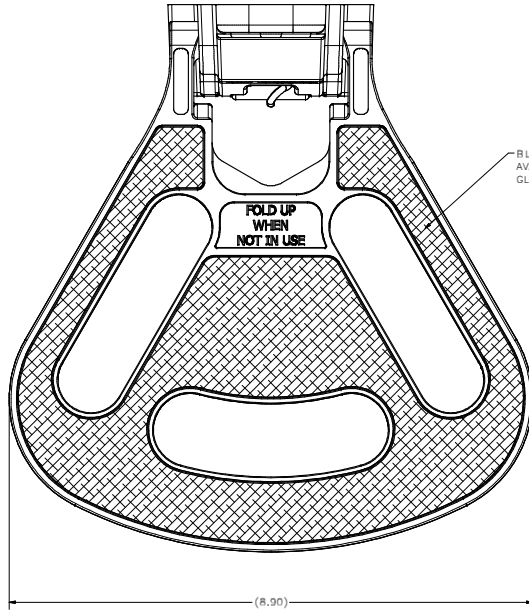
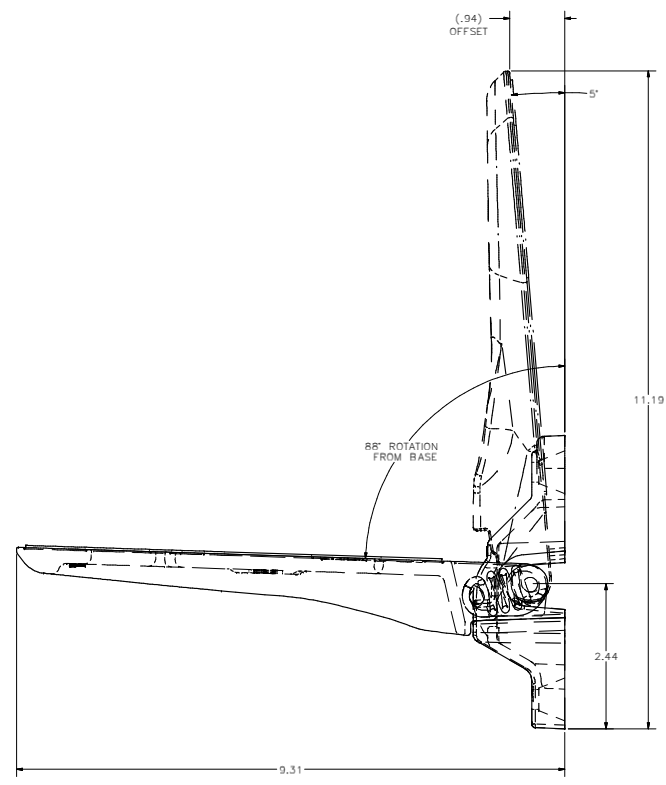
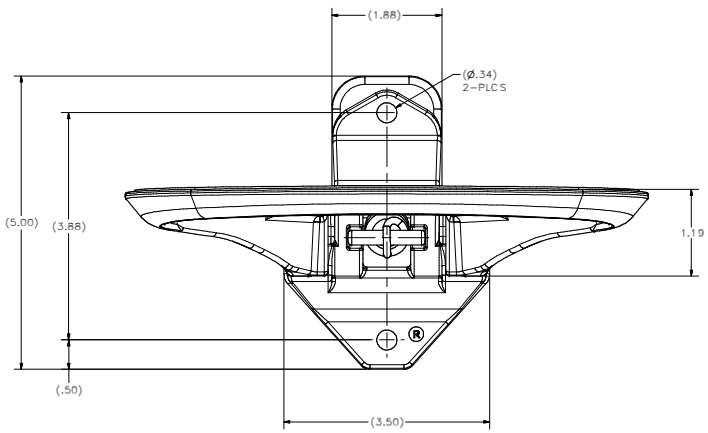


CONFIDENTIAL NOTICE: This drawing and the design, specifications and engineering information disclosed herein are the property of Eberhard Manufacturing Company and are not to be disseminated or reproduced without express written consent. The drawing is issued in accordance with the terms of the contract between the customer and Eberhard Manufacturing Company. It is the customer's responsibility to ensure that the drawing is used for the intended purpose and that all necessary approvals are obtained before any manufacturing or assembly activities are initiated. Eberhard Manufacturing Company is not responsible for any consequences arising from the use of this drawing for any purpose other than that intended.

REVISIONS		REV.	DATE
1	ISSUED FOR PRODUCTION		
2	CHANGED TO BRACKET		
3	CHANGED TO BRACKET		
4	CHANGED TO BRACKET		
5	CHANGED TO BRACKET		
6	CHANGED TO BRACKET		
7	CHANGED TO BRACKET		
8	CHANGED TO BRACKET		
9	CHANGED TO BRACKET		



- NOTE:
- 1) FOLDING FOOT STEP ASSEMBLY CONFORMS TO NFPA 1901 STANDARD FOR AUTOMOTIVE FIRE APPARATUS 1999 EDITION SECTIONS 13-7.1, 13-7.2, AND 13-7.3.
  - 2) STEP WILL SUSTAIN A MINIMUM STATIC LOAD OF 1000 LBS.
  - 3) PARTS IN ASSEMBLY INCLUDE MANGANESE BRONZE CAST FOOT STEP AND BRACKET, STAINLESS STEEL SPRING AND PINS.
  - 4) USE GRADE 8, 3/8" ROUND HEAD BOLTS FOR INSTALLATION.
  - 5) MATERIAL: CDA B6500 MANGANESE BRONZE  
FORMANLY: CDA 421 MANGANESE BRONZE
  - 6) FINISHES:  
CADMIUM (02)  
POLISHED BRIGHT CHROME (03) ASTM B456 SC3  
CHROME FLASH (05) ASTM B456 SC3  
E-COAT (23)
  - 7) PATENTS: No. 4,462,486 CAN: 1,209,161  
U.S. 6,471,002
  - 8) PATENTED STEP WITH SKID RESISTANT SURFACE, PATENT NOS, D455,076  
U.S. 6,471,002
  - 9) TRADEMARK: THIS CONFIGURATION IS A TRADEMARK OF EBERHARD MFG. CO.



NOTE:  
ALL DIMENSIONS ARE FOR REFERENCE

CUSTOMER DRAWING  
SHT.1 OF 2

EBERHARD MANUFACTURING CO.  
DIVISION OF  
THE EASTERN COMPANY  
CLEVELAND, OHIO 44114-9313

FOLDING FOOT STEP  
ASSEMBLY

606009

THIS DOCUMENT IS IN ACCORDANCE WITH ANSI Z39-18-1997		DATE	REV.
1	ISSUED FOR PRODUCTION		
2	CHANGED TO BRACKET		
3	CHANGED TO BRACKET		
4	CHANGED TO BRACKET		
5	CHANGED TO BRACKET		
6	CHANGED TO BRACKET		
7	CHANGED TO BRACKET		
8	CHANGED TO BRACKET		
9	CHANGED TO BRACKET		

SUPERSEDES DRAWING 606009 DATED 06-12-06

C:\Working\_Folder\ActivePro\606009\606009\_SHT.1.dwg