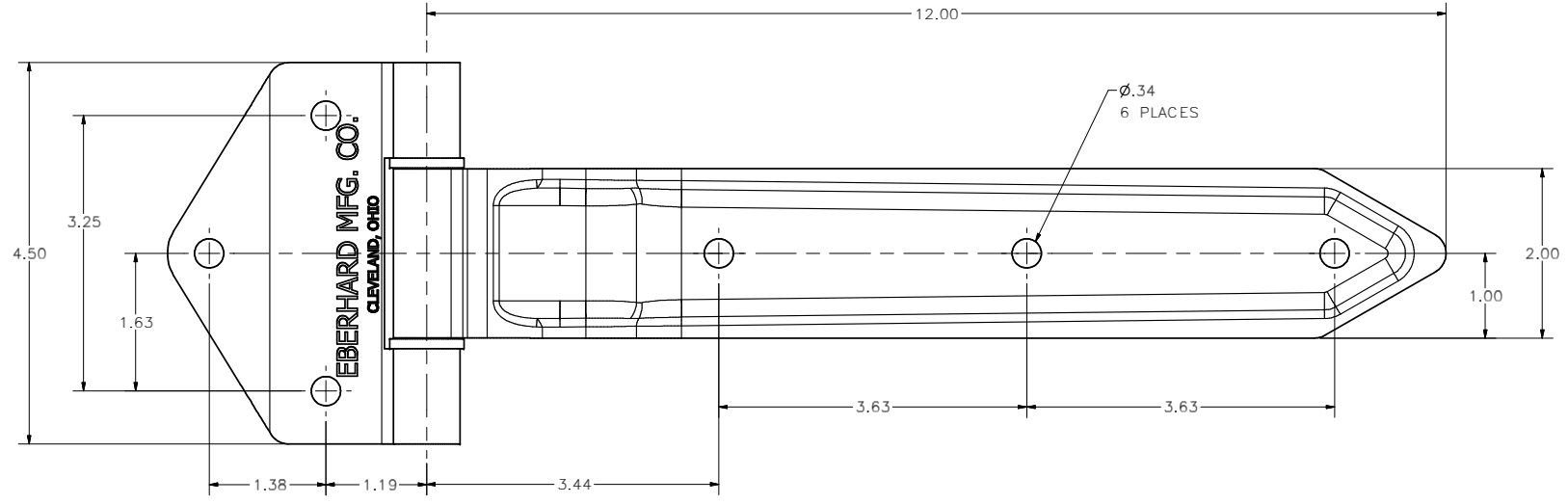
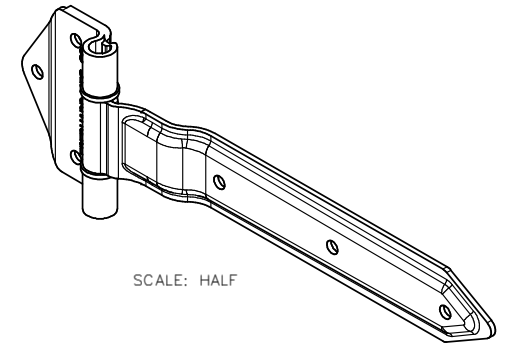


CONFIDENTIAL NOTICE: This drawing and the designs, specifications and engineering information disclosed hereon are the property of Eberhard Manufacturing Company and are not to be disseminated or reproduced without express written consent. The drawing is loaned in confidence and then only for consideration of the matter disclosed hereon. In accepting loan of this drawing, recipient agrees to keep it and the matter disclosed hereon in confidence and not to use nor permit their use in any way detrimental to Eberhard Manufacturing Company, Division of the Eastern Company, 21844 Drake Road, Cleveland, Ohio 44149-9712. © 2013 EBERHARD MFG. CO.

REVISION HISTORY			
REV	DESCRIPTION	EN	DATE
1	CONVERTED TO 3D	5619	8-30-13



CUSTOMER PRINT  
SHEET 1 OF 2

EBERHARD MANUFACTURING CO.  
DIVISION OF  
THE EASTERN COMPANY  
CLEVELAND, OHIO 44149-9712

OVER THE SEAL TYPE STEEL  
FLUSH HINGE ASSEMBLY

THIS DOCUMENT IS IN ACCORDANCE WITH ASME Y14.15-2009		DATE 8/30/2013	NAME CKBY
UNLESS OTHERWISE SPECIFIED TOLERANCES ARE AS FOLLOWS:		SCALE FULL	CHKBY
ANGLES: $\frac{1}{16}$ $\frac{1}{32}$ $\frac{1}{64}$			
2 PLACE DEC.: $\pm .03$ $\pm .06$			
3 PLACE DEC.: $\pm .015$ $\pm .03$			
ALL HOLES: $\pm .005$ $\pm .13$			

MATERIAL	PART NUMBER
-----	5890-X

SUPERSEDES DRAWING 5890-X SHEET 1 OF 2 DATED 6-9-05.

C:\Working\_Folder\Archive\Pro\5\58XX\5890-X SH1.dwg