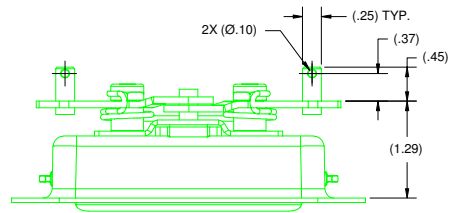
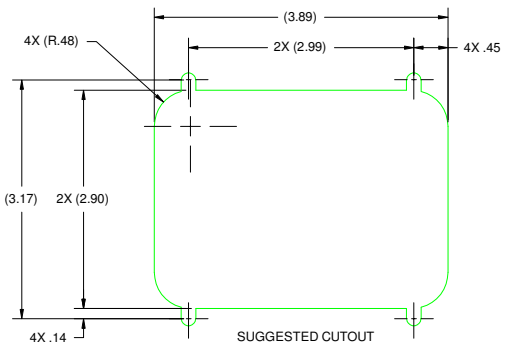
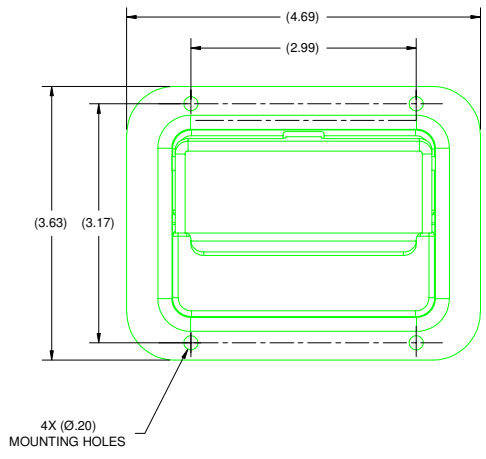
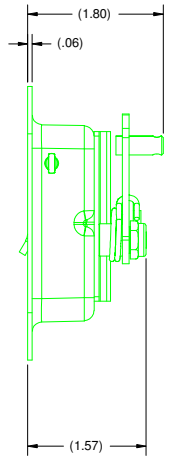
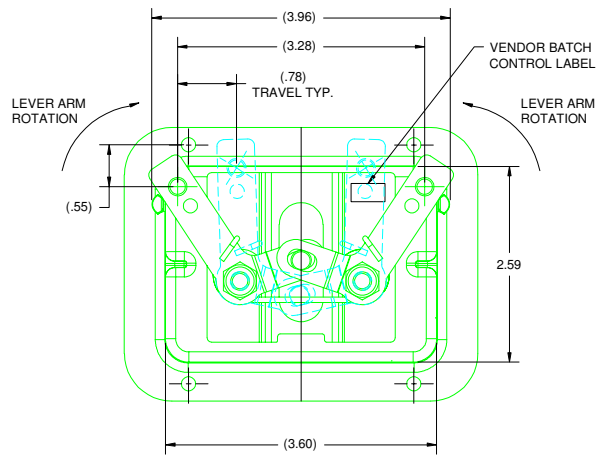


**CONFIDENTIAL NOTICE:** This drawing and the designs, specifications and engineering information contained herein are the property of Eberhard Manufacturing Company and are not to be disseminated or reproduced without express written consent. The drawing is issued in confidence and this may be the confidential information of the customer. It is the responsibility of the customer to ensure that the confidential information is not disclosed to unauthorized persons. Eberhard Manufacturing Company, Division of The Eastern Company, Cleveland, Ohio 44136-6687. © 2004 EBERHARD MFG. CO.

NO.	CHANGE	ENG. NO.	DATE	REV. BY	APPROV. BY



**NOTES:**  
1.) EBERHARD FINISH: (BE) BLACK POWDER EXTERIOR.

**CUSTOMER PRINT**  
**SHEET 1 OF 2**

**EBERHARD MANUFACTURING CO.**  
DIVISION OF  
THE EASTERN COMPANY  
CLEVELAND, OHIO 44136-6687

UNLESS OTHERWISE SPECIFIED TOLERANCES ARE AS FOLLOWS:	DATE	SCALE
ANGLES: .02°	12/19/04	AS SHOWN
2 PLACE DEC.: ±.03		
3 PLACE DEC.: ±.015		
ALL HOLES: ±.005		

NAME	MATERIAL	PART NUMBER
NON-LOCKING, PADDLE HANDLE TWO POINT ASSEMBLY		3-4273