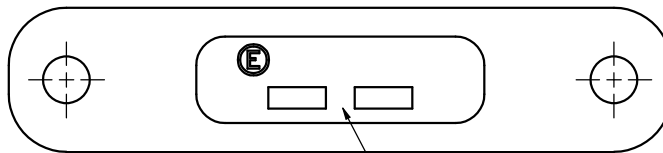
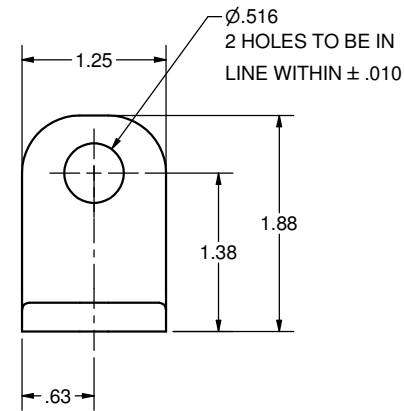
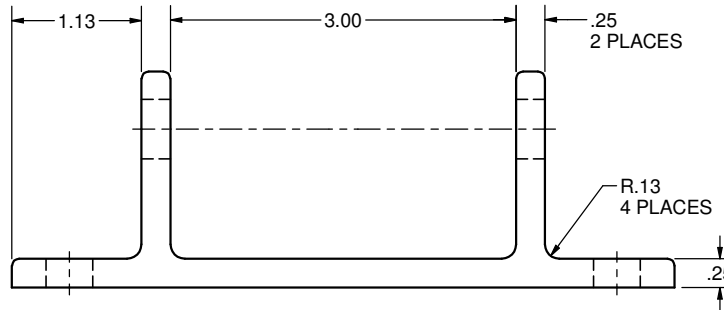
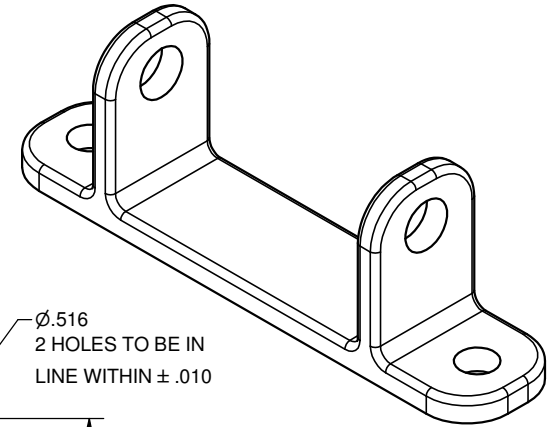
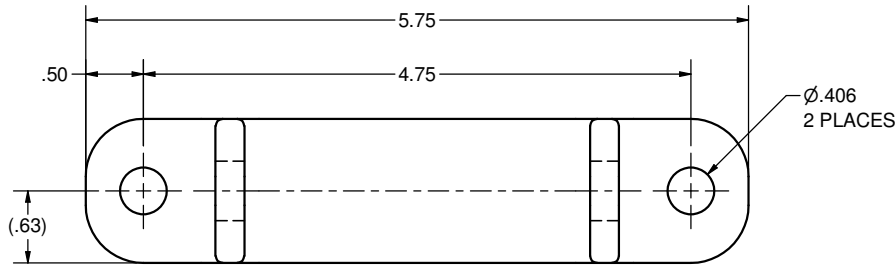


CONFIDENTIAL NOTICE: This drawing and the designs, specifications and engineering information disclosed hereon are the property of Eberhard Manufacturing Company and are not to be disseminated or reproduced without express written consent. The drawing is loaned in confidence and then only for consideration of the matter disclosed hereon. In accepting loan of this drawing, recipient agrees to keep it and the matter disclosed hereon in confidence and not to use nor permit their use in any way detrimental to Eberhard Manufacturing Company, Division of the Eastern Company. 21944 Drake Road, Cleveland, Ohio 44149-9712 © 2015 EBERHARD MFG. CO.

REVISION HISTORY					
REV	DESCRIPTION	EN	DATE	REV. BY	APVD. BY
1	RELEASED, REF PP11466-C	5723	10/2/2015	FLP	MR



ⓔ, PART NUMBER, VENDOR ID AND BATCH CODE TO APPEAR IN RECESSED CAVITY

CUSTOMER PRINT
SHEET 1 OF 2

- NOTES:
 1. MATERIAL: 304L STAINLESS STEEL
 2. SOLUTION ANNEALED
 3. EBERHARD FINISH: PASSIVATED, FC (22)

THIS DOCUMENT IS IN ACCORDANCE WITH ASME Y14.15-2009	
LINEAR MEASURE: INCH	DATE: 10/2/2015
UNLESS OTHERWISE SPECIFIED TOLERANCES ARE AS FOLLOWS:	DR. BY: FLP
IN MM	SCALE: FULL
ANGLES: ± 2° ± 2°	CHK. BY:
2 PLACE DEC.: ± .03 ± .76	
3 PLACE DEC.: ± .015 ± .38	
ALL HOLES: ± .005 ± .13	

EBERHARD MANUFACTURING CO. DIVISION OF THE EASTERN COMPANY CLEVELAND, OHIO 44149-9712	
NAME: HINGE BUTT, INVESTMENT CAST	PART NUMBER: 17033-SSC
MATERIAL: SEE NOTE	

C:\Working_Folder\Archive\Pro\1177XXX\170XXX\17033\17033-SSC SH1.dwg