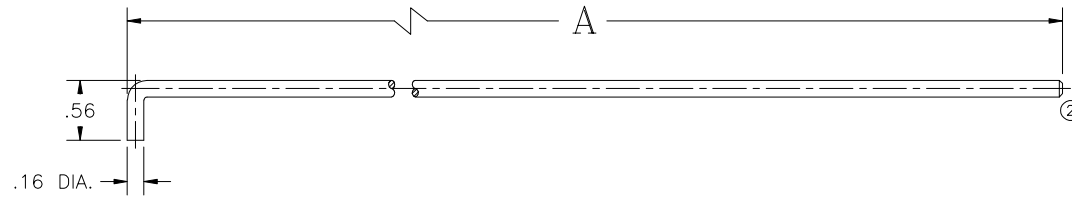


16682 SH1

CONFIDENTIAL NOTICE: This drawing and the designs, specifications and engineering information disclosed hereon are the property of Eberhard Manufacturing Company and are not to be disseminated or reproduced without express written consent. The drawing is loaned in confidence and then only for consideration of the matter disclosed hereon. In accepting loan of this drawing, recipient agrees to keep it and the matter disclosed hereon in confidence and not to use nor permit their use in any way detrimental to Eberhard Manufacturing Company, Division of the Eastern Company. 21944 Drake Road, Cleveland, Ohio 44149-9712 © 2006 EBERHARD MFG. CO.

P/N	A
16682	36"
1-16682	48"
2-16682	23.68"
3-16682	52"

①



FINISH:
(25) ELECTROPLATED ZINC

CUSTOMER PRINT
SHEET 1 OF 2

NO.	CHANGE	ENG. NO.	DATE	UNLESS OTHERWISE SPECIFIED TOLERANCES ARE AS FOLLOWS:	DATE 2-26-02	DR. BY SAA	NAME	
	RELEASED	EN 5036	3-1-02				.156 DIA. ROD WITH 90° BEND	
1	ADDED 3-16682 TO CHART	EN 5228	12-23-05	ANGLES: ±2° 2 PLACE DEC.: ±.03 3 PLACE DEC.: ±.015 ALL HOLES: ±.005				
2	ADDED CHAMFER TO DETAIL	EN 5235	2-17-06				MATERIAL -----	
							EBERHARD MANUFACTURING CO. DIVISION OF THE EASTERN COMPANY CLEVELAND, OHIO 44149-9712	PART NUMBER 16682
							CHART	