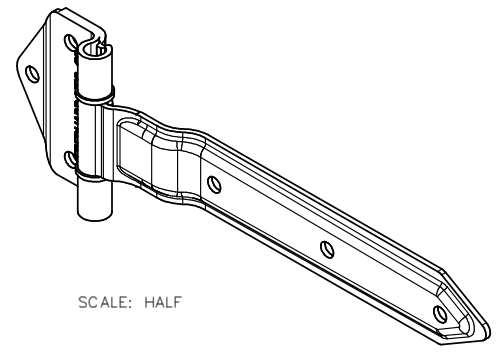
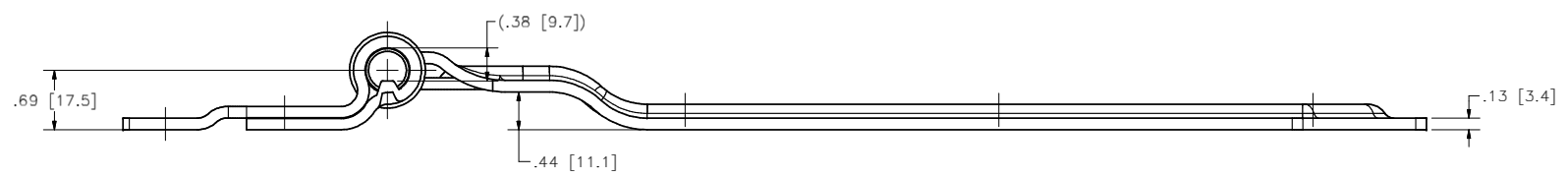
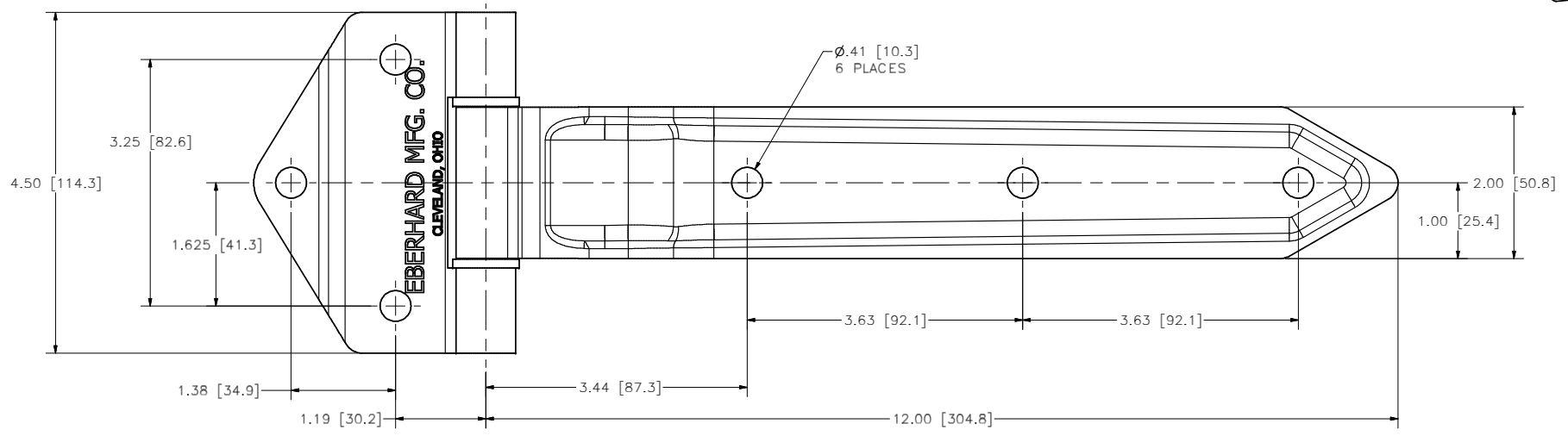


CONFIDENTIAL NOTICE: This drawing and the designs, specifications and engineering information disclosed hereon are the property of Eberhard Manufacturing Company and are not to be disseminated or reproduced without express written consent. The drawing is loaned in confidence and then only for consideration of the matter disclosed hereon. In accepting loan of this drawing, recipient agrees to keep it and the matter disclosed hereon in confidence and not to use nor permit their use in any way detrimental to Eberhard Manufacturing Company, Division of the Eastern Company, 21844 Drake Road, Cleveland, Ohio 44149-9712. © 2013 EBERHARD MFG. CO.

REVISION HISTORY			
REV	DESCRIPTION	EN	DATE
	CONVERTED TO 3D	5619	8-30-13



SCALE: HALF



NOTE: FINISH: HOT DIP GALVANIZED, FC (13)

SUPERSEDES DRAWING 14-5890-X SHEET 1 OF 2 DATED 6-9-05

[M.M.]
CUSTOMER PRINT
SHEET 1 OF 2

EBERHARD MANUFACTURING CO. DIVISION OF THE EASTERN COMPANY CLEVELAND, OHIO 44149-9712	
OVER THE SEAL TYPE STEEL FLUSH HINGE ASSEMBLY	
MATERIAL	PART NUMBER
-----	14-5890-X

THIS DOCUMENT IS IN ACCORDANCE WITH		DATE	NAME
ASME Y14.5-2009		8/30/2013	DRBY
UNLESS OTHERWISE SPECIFIED	TOLERANCES ARE AS FOLLOWS:	DRBY	FLP
ANGLES:	$\frac{1}{16}$ $\frac{1}{32}$	SCALE	FULL
2 PLACE DEC.:	$\pm .03$ $\pm .76$	CHKBY	
3 PLACE DEC.:	$\pm .015$ $\pm .38$		
ALL HOLES:	$\pm .005$ $\pm .13$		

C:\Working_Folder\Archive\Pro\558X\14-5890-X SH1.dwg