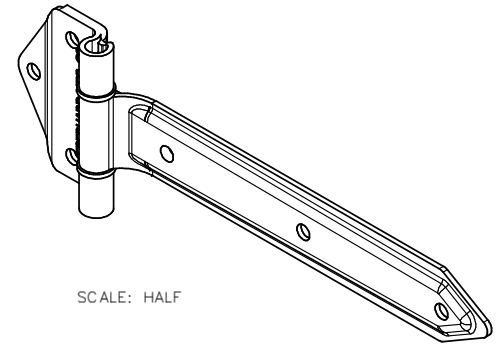
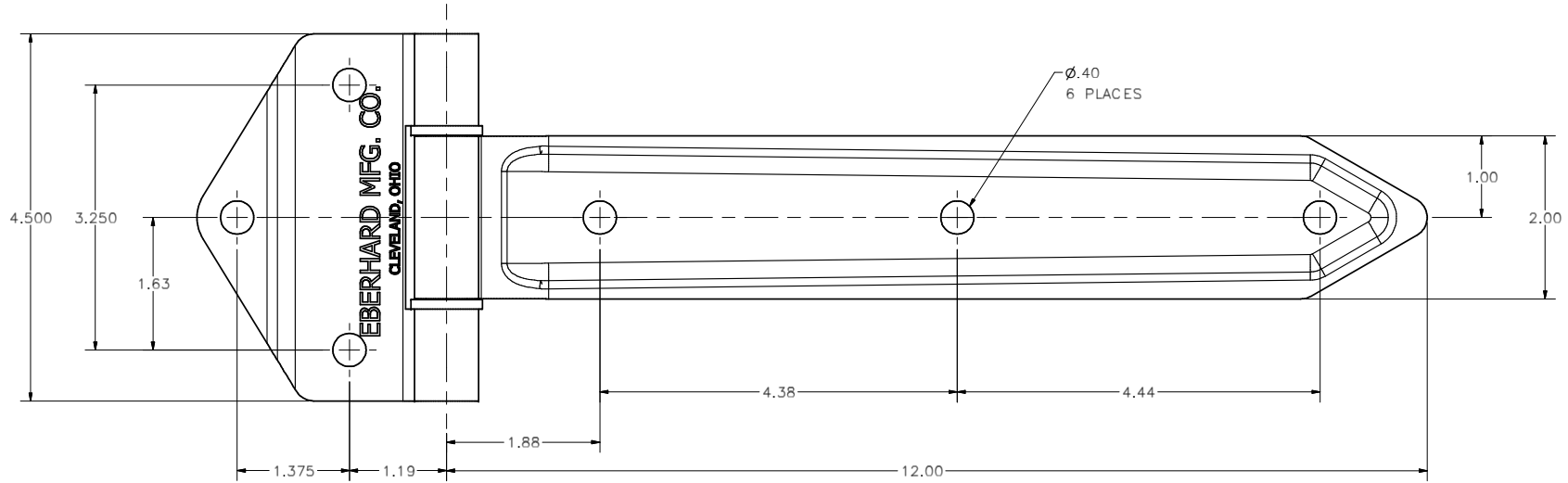


CONFIDENTIAL NOTICE: This drawing and the designs, specifications and engineering information disclosed herein are the property of Eberhard Manufacturing Company and are not to be disseminated or reproduced without express written consent. The drawing is loaned in confidence and then only for consideration of the matter disclosed herein. In accepting loan of this drawing, recipient agrees to keep it and the matter disclosed herein in confidence and not to use nor permit their use in any way detrimental to Eberhard Manufacturing Company, Division of the Eastern Company, 21844 Drake Road, Cleveland, Ohio 44149-9717. © 2013 EBERHARD MFG. CO.

REVISION HISTORY			
REV	DESCRIPTION	EN	DATE
1	CONVERTED TO 3D	5619	8-30-13



SCALE: HALF



NOTE: FINISH: HOT DIP GALVANIZED, FC (13)

SUPERSEDES DRAWING 14-5870-X SHEET 1 OF 2 DATED 5-27-05

CUSTOMER PRINT
SHEET 1 OF 2

EBERHARD MANUFACTURING CO.
DIVISION OF
THE EASTERN COMPANY
CLEVELAND, OHIO 44149-9712

THIS DOCUMENT IS IN ACCORDANCE WITH ASME Y14.15-2009		DATE	NAME
UNLESS OTHERWISE SPECIFIED TOLERANCES ARE AS FOLLOWS:	DRYBY	8/30/2013	
LINE SIZE	MEASURE	INCH	
ANGLE:	1/4"	1/8"	1/16"
2 PLACE DEC.:	0.03	0.06	0.12
3 PLACE DEC.:	0.015	0.03	0.06
ALL HOLES:	0.005	0.01	0.02
SCALE	1:1		
CHK BY			
MATERIAL		PART NUMBER	
		14-5870-X	