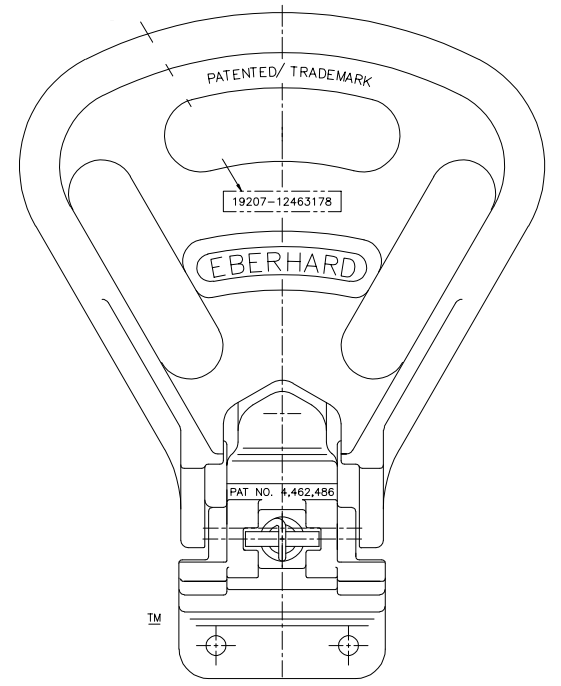
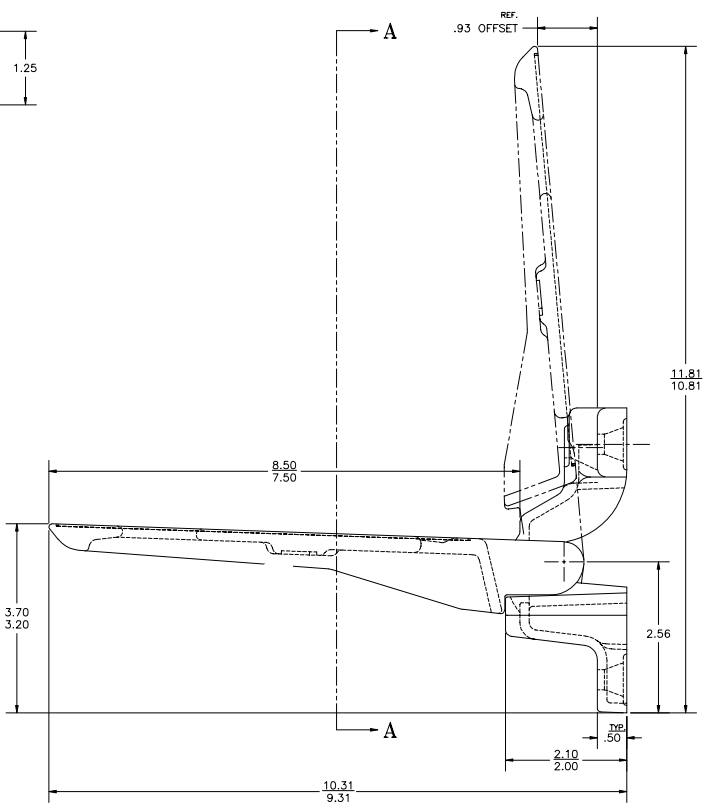
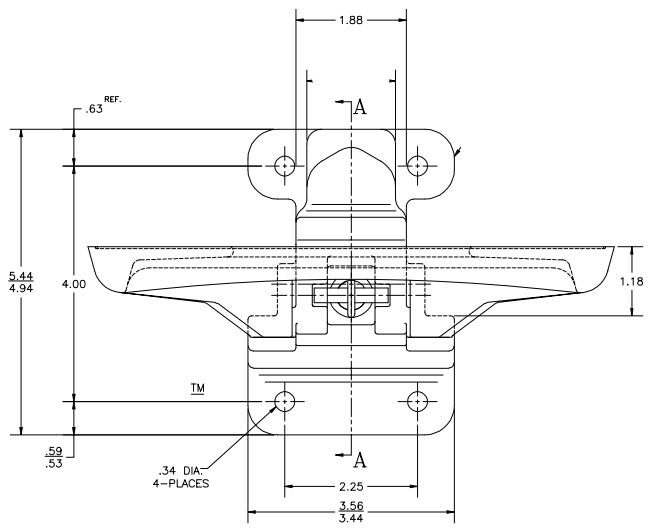
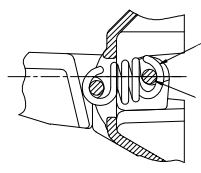
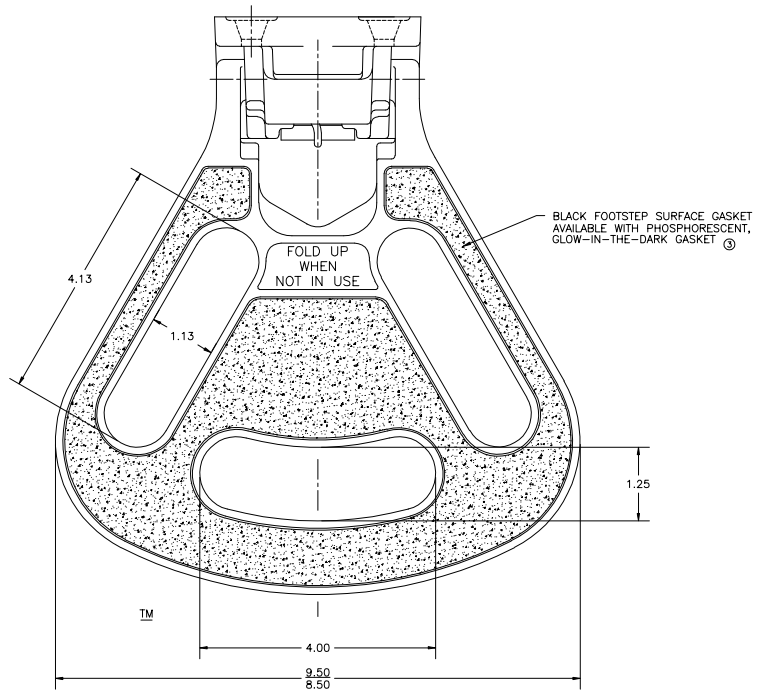


1-606009 CONFIDENTIAL NOTICE: The drawings and the designs, specifications and engineering information disclosed herein are the property of Eberhard Manufacturing Company and are not to be disseminated or reproduced without express written consent. The penalty for failure to conform to the terms of this notice is the forfeiture of all rights, including patent rights, and the right to recover damages in tort and in any way authorized in Eberhard Manufacturing Company, Division of The Eastern Company, 21941 Cedar Road, Cleveland, Ohio 44140-8712. © 2008 EBERHARD MFG. CO.



VIEW A-A
FOLDING FOOT STEP
IN CLOSED POSITION

SUPERSEDES DRAWING 1-606009 DATED 9-9-99.

NO.	CHANGE	ENG. NO.	DATE	UNLESS OTHERWISE SPECIFIED TOLERANCES ARE AS FOLLOWS:	DWG. DATE	REV.
1	ISSUED	2-14-03	2-14-03	ANGLES: 1/4"	2-14-03	1
2	REV. 1: 0.05 DECIMALS			2 PLACE DEC: 0.05		2
3	REV. 2: 0.01 DECIMALS			3 PLACE DEC: 0.01		3
4	REV. 3: 0.005 DECIMALS			ALL HOLES: 0.005		4

EBERHARD MANUFACTURING CO.
DIVISION OF
THE EASTERN COMPANY
CLEVELAND, OHIO 44140-8712

FOLDING FOOT STEP ASSEMBLY

SEE NOTE

PART NUMBER
1-606009