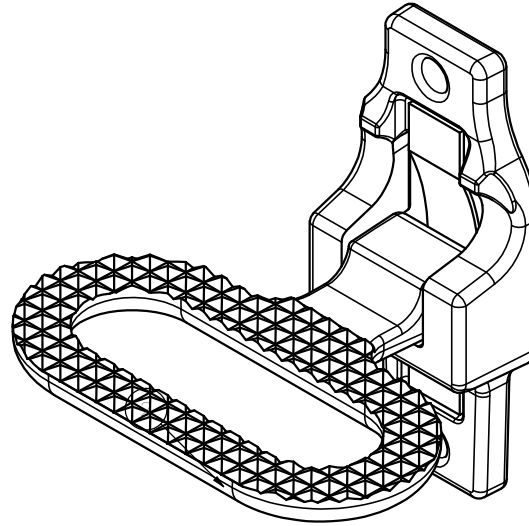
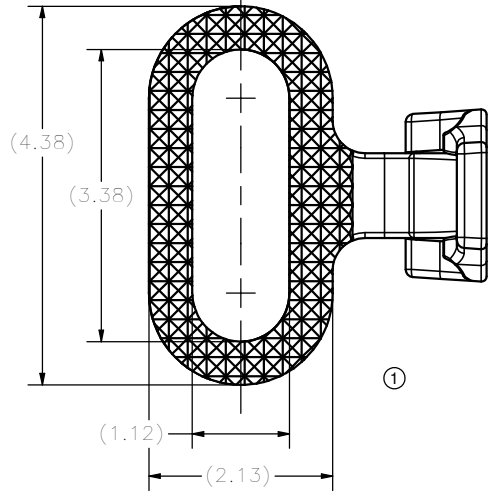
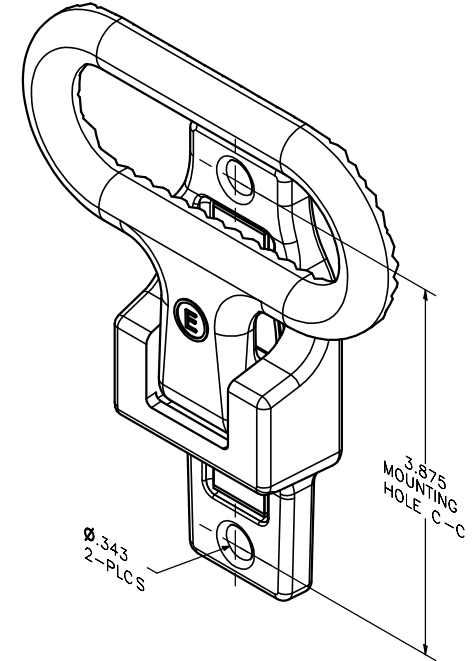


CONFIDENTIAL NOTICE: This drawing and the designs, specifications and engineering information disclosed hereon are the property of Eberhard Manufacturing Company and are not to be disseminated or reproduced without express written consent. The drawing is loaned in confidence and then only for consideration of the matter disclosed hereon. In accepting loan of this drawing, recipient agrees to keep it and the matter disclosed hereon in confidence and not to use nor permit their use in any way detrimental to Eberhard Manufacturing Company, Division of the Eastern Company, 21944 Drake Road, Cleveland, Ohio 44149-9712. © 2011 EBERHARD MFG. CO.

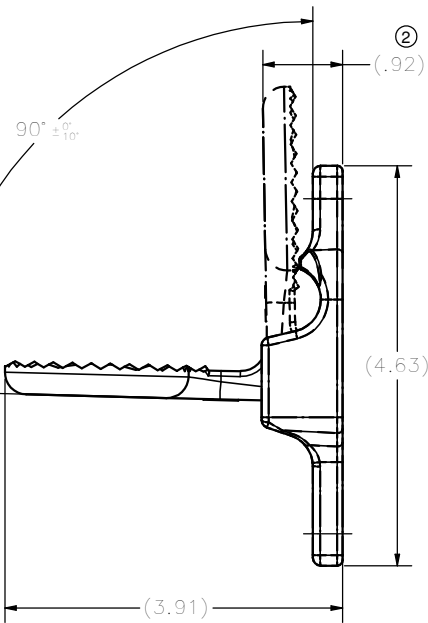
REVISION HISTORY			
REV	DESCRIPTION	EN	DATE
	RELEASE	EN5532	12/09/2011
1	ADDED REFERENCE DIMENSIONS & TOP VIEW	EN5542	2/24/2012
2	UPDATED VIEWS TO BRACKET UPDATES // .92 REF. DIM WAS 1.00 // REMOVED BOM & BALLOON CALL OUTS	EN5560	06/29/2012



LOWERED POSITION
SCALE 1 : 1



UPPER POSITION
SCALE 1 : 1



NOTES:

- 1.) ALL DIMENSIONS FOR REFERENCE ONLY.
- 2.) STEP GEOMETRY CONTROLLED BY SOLID MODEL DATA.

FINISHES:

- (04) BRIGHT CHROME
- (19) QQP-416 GOLD
- (25) ELECTROPLATED ZINC

SUPERSEDES DRAWING 1-575709-50 SH1 DATED 08-23-2007.

THIS DOCUMENT IS IN ACCORDANCE WITH ASME Y14.15-2009	
DATE: 12/12/2011	NAME:
UNLESS OTHERWISE SPECIFIED TOLERANCES ARE AS FOLLOWS:	DR BY: K.Braun
IN MM	SCALE: *
ANGLES: ±.2° ±.2°	CHK BY:
2 PLACE DEC.: ±.03 ±.76	
3 PLACE DEC.: ±.015 ±.38	
ALL HOLES: ±.009 ±.13	

EBERHARD MANUFACTURING CO. DIVISION OF THE EASTERN COMPANY CLEVELAND, OHIO 44149-9712	
FOLDING STEP	
MATERIAL:	PART NUMBER: 1-575709-50