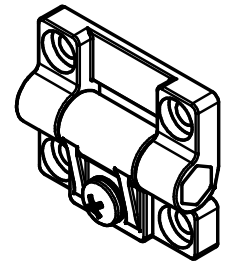
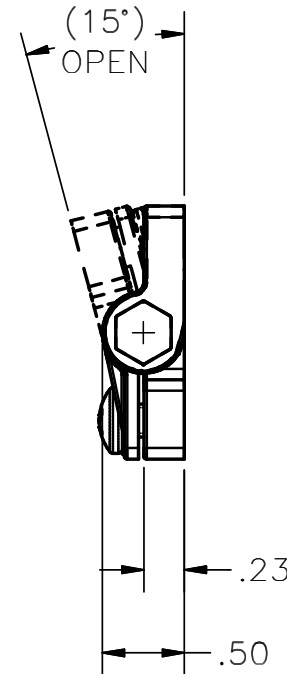
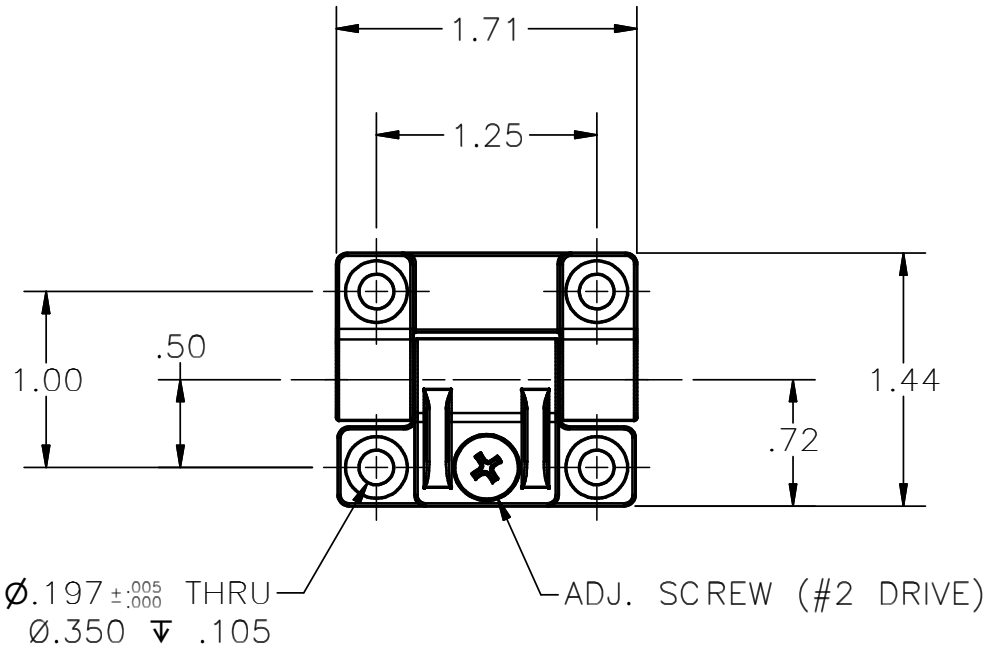


**CONFIDENTIAL NOTICE:** This drawing and the designs, specifications and engineering information disclosed hereon are the property of Eberhard Manufacturing Company and are not to be disseminated or reproduced without express written consent. The drawing is loaned in confidence and then only for consideration of the matter disclosed hereon. In accepting loan of this drawing, recipient agrees to keep it and the matter disclosed hereon in confidence and not to use nor permit their use in any way detrimental to Eberhard Manufacturing Company, Division of the Eastern Company. 21944 Drake Road, Cleveland, Ohio 44149-9712 © 2009 EBERHARD MFG. CO.



CUSTOMER PRINT  
SHEET 1 OF 2

FINISH: (MB) MATTE BLACK.

REV	DESCRIPTION	EN	DATE
1	RELEASED, WAS M10204	5474	10-8-10

REVISION HISTORY

UNLESS OTHERWISE SPECIFIED TOLERANCES ARE AS FOLLOWS:	
ANGLES:	$\pm 2'$
2 PLACE DEC.:	$\pm .03$
3 PLACE DEC.:	$\pm .015$
ALL HOLES:	$\pm .005$

DATE	10/5/2010
DR. BY	JRG
SCALE	FULL
CHK. BY	

EBERHARD MANUFACTURING CO.  
DIVISION OF  
THE EASTERN COMPANY  
CLEVELAND, OHIO 44149-9712

NAME FRICTION HINGE W/ SPECIAL .197 MOUNTING HOLES	
MATERIAL BLACK - GLASS FILLED NYLON	PART NUMBER 1-16945