

Eberhard Manufacturing Company



Power-Up Locking System With Light Feature Operations and Applications Manual

This Manual and its entire contents disclosed herein are the property of the Eberhard Manufacturing Company, Division of The Eastern Company, and are not to be reproduced without written consent of Eberhard.

Some or all of the products (or configurations thereof) shown in this catalog may be covered by one or more U.S. or foreign design or utility patents, common law trademarks, and/or federally registered trademarks.

Drawings and dimensions shown in this catalog are for reference only. For manufacturing production or tooling purposes, obtain current engineering print from factory.

THE EASTERN COMPANY

P.O. Box 460
Naugatuck, Connecticut 06770-0460
Phone: (203) 729-2255
Fax: (203) 723-8653
E-Mail: ir@easterncompany.com
www.easterncompany.com
ASE: EML

A Division of the Eastern Company

EBERHARD MANUFACTURING COMPANY

21944 Drake Road
Cleveland, Ohio 44149
Phone: (440) 238-9720
Toll Free: (800) 334-6706
Fax: (440) 572-2732
www.eberhard.com

A Wholly Owned Subsidiary of The Eastern Company

EBERHARD HARDWARE MFG., LTD.

Box 367
Tilsonburg, Ontario N4G 4H8
Phone: (519) 842-8457
Toll Free: (800) 567-3344
Fax: (519) 688-0575
www.eberhardcanada.com
ISO 9001 Registered

Table of Contents:

Supplied Hardware:

Standard System – 7 Compartment Door Locks:	Page 1
Expanded System – 18 Compartment Door Locks:	Page 1
Options:	Page 1

System Protection:

Electrical Protection:	Page 2
System Protection:	Page 2
Dome Light Function:	Page 2
16720-1 Power Actuator Specifications:	Page 2
16720-5 Key Fob (Transmitter) Specifications:	Page 2

Wiring Breakdown:

Base System with (7) Compartment Door Locks:	Page 3
Expansion System with (11) Compartment Door Locks:	Page 3
Expansion System with (8) to (18) Compartment Door Locks:	Page 3
1-16720-4 Control Module and 1-16720-6 Cab Wire Harness:	Page 3-4
2-16720-7 Compartment Wire Harness:	Page 4
2-16720-8 Expansion Relay Wire Harness:	Page 5
2-16720-9 Expansion Compartment Wire Harness:	Page 5
2-16720-10 Expansion Compartment Wire Harness:	Page 6
16720-1 Power Actuator:	Page 6
16746-U Power 3 Way Toggle Switch Kit W/Connectors:	Page 7
1-16746-U Illuminated Power 3 Way Toggle Switch Kit W/Connectors:	Page 7-8

Miscellaneous:

Setting for Positive or Negative Polarity:	Page 9
Programming the Key Fobs:	Page 9
Replacement Components:	Page 9

Drawings:

Power-Up Component Drawings:	Page 10-21
Power Locking Key Cylinder:	Page 22
Power-Up Sales Brochure:	Page 23-24

Eberhard Manufacturing Company

POWER-UP Locking System – Supplied Hardware

Base System for (7) compartment door locks:

- **1-16720-50PK Control Module W/2 Key fobs and Dome Light Feature**
Includes: 1-16720-4 Control Module with Dome Light Feature – Qty. (1)
16720-5 Key Fob (Transmitter) – Qty. (2)
- **16720-1 Power Actuator – Qty. (7)**
- **16720-2 Power Actuator Mtg. Screws – Phillips Pan Head #8-18 Type “AB” Thread – Qty. (14)**
- **16720-3 Connecting Rod – Qty. (7)**
- **1-16720-6 Cab Wire Harness with Dome Light Feature – Qty. (1)**
Provides independent power locking for compartment doors
Provides optional connection to OEM power locking system using OEM fob (transmitter)
Provides optional power for dome light feature
- **2-16720-7 Compartment Wire Harness with Dome Light Feature – Qty. (1)**
Provides (3) actuators for road side – (4) actuator for curb side
Provides power leads for self-grounding dome lights

Expansion System for (18) compartment door locks:

- **2-16720-8 Expansion Relay Harness with Dome Light feature – Qty. (1)**
- **2-16720-9 Expansion Compartment Wire Harness with Dome Light Feature – Qty. (1)**
* Requires 2-16720-8 Expansion Relay Harness with Dome Light Feature
Adds an additional (6) actuators for road side – (5) actuator for curb side
Provides for a total of (9) actuators for road side – (9) actuator for curb side total

Options:

- **2-16720-10 Expansion Compartment Wire Harness with Dome Light Feature – Qty. (1)**
Adds (2) actuators per side to 2-16720-7 Compartment Wire Harness with Dome Light Feature
* Does not require 2-16720-8 Expansion Relay Harness with dome Light Feature
Provides for a total of (5) actuators for road side – (6) actuators for curb side total
- **16746-U Power 3 Way Toggle Switch Kit W/Connectors – Qty. (1)**
Provides a non-illuminated toggle switch for the compartment door locks to a cab without an OEM power locking system
Includes: 3 Way Toggle Switch, non-illuminated – Qty. (1)
Trim Plate – Qty. (1)
Wire Harness – Qty. (1)
Butt Splice Connector – Qty. (2)
Insulated Ring Terminal for #10 Stud – Qty. (1)
- **1-16746-U Power 3 Way Toggle Switch Kit W/Connectors – Qty. (1)**
Provides an illuminated toggle switch for the compartment door locks to a cab without an OEM power locking system
Includes: 3 Way Toggle Switch, illuminated – Qty. (1)
Trim Plate – Qty. (1)
Wire Harness – Qty. (1)
Butt Splice Connector – Qty. (2)
Insulated Ring Terminal for #10 Stud – Qty. (2)

Eberhard Manufacturing Company

POWER-UP Locking System – System Protection

Electrical Protection:

- **1-16720-4 Control Module:** Provides over-trigger protection for power actuators
- **1-16720-6 Cab Wire Harness:** In-line fuse protection – 40 amp for output, 5 amp for processor & 15amp for lights
- **2-16720-8 Expansion Relay Wire Harness:** Individual relay for each side of the vehicle.
In-line fuse protection – 40 amp for power

System Protection:

- **1-16720-4 Control Module:**
 - ▶ Incorporates a “Lock Pulse Timer” to provide a 0.4 second pulse from the control module to the actuators. If the buttons on the key fob are held down for an extended period, the “Lock Pulse Timer” will prevent the actuators from being damaged by over firing.
 - ▶ Incorporates a “Time Out” feature that prevents damage to the actuators by shutting down the system for 30 seconds if the buttons on the key fob are activated more than 8 times in a 30 second period. After the 30 second “Time Out” period, the system will function as normal.
 - ▶ Can hold up to (4) key fobs with different signals. If any key fobs are lost or damaged and needs to be replaced, the control module can learn/program new and/or additional key fobs.
 - ▶ Can be set-up for use in either positive or negative polarity.
- **1-16720-4 Control Module – Dome Light Function:**
 - ▶ Incorporates a feature to activate/deactivate dome lights for up to 8 compartments. On the key fob, when Button #2 (Unlock) is depressed, the dome lights will be activated for 10 minutes. When Button #1 (Lock) is depressed, the dome lights will be turned off. Optionally, when Button #1 (Lock) and Button #3 (N/A) are depressed at the same time, the dome lights will be activated for 10 minutes. By depressing Button #1 (Lock) and Button #4 (N/A) at the same time, the dome lights will be turned off.
- **16720-1 Power Actuators:**
 - ▶ Working voltage: 8.8 VDC to 13.7 VDC.
 - ▶ Current absorption: 4.5 A (Max.).
 - ▶ Temperature range: -18.4° F to +188.6° F.
 - ▶ Power: 7.8 lbf.
- **16720-5 Key Fob (Transmitter):**
 - ▶ Working range of 150 feet. Maximum.
 - ▶ Frequency = 303.875 MHz, Rolling Code
 - ▶ Separate “Lock” & “Unlock” Buttons.

Eberhard Manufacturing Company

POWER-UP Locking System – Wiring Breakdown

Locate and mount 1-16720-4 Control module in a high position in front drivers' side compartment. Make sure the control module is in a position where it will not be damaged or come into contact with water.

Make wire connections as noted below:

For base system with (7) compartment door locks, connect wire harnesses as follows:

1-16720-4 Control Module to 1-16720-6 Cab Wire Harness to 2-16720-7 Compartment Wire Harness.

For system with (11) compartment door locks, connect wire harnesses as follows:

1-16720-4 Control Module to 1-16720-6 Cab Wire Harness to 2-16720-7 Compartment Wire Harness to 2-16720-10 Expansion Compartment Wire Harness.

For system with (8) to (18) compartment door locks, connect wire harnesses as follows:

1-16720-4 Control Module to 1-16720-6 Cab Wire Harness to 2-16720-8 Expansion Relay Wire Harness to 2-16720-7 Compartment Wire Harness to 2-16720-9 Expansion Compartment Wire Harness.

1-16720-4 Control Module and 1-16720-6 Cab Wire Harness with Dome Light Feature:

Terminal connections from outer terminal towards the center on control module:

- **Terminal #1: Blue Wire** – Motor connection for actuators – 12 ga. wire
- **Terminal #2: Green Wire** – Motor connection for actuators – 12 ga. wire
- **Terminal #3: Red Wire** – Wire connection for power from cab – 14 ga. Wire
- **Terminal #4: Black Wire** – Wire connection for chassis ground (actuators) – 14 ga. wire
- **Terminal #5: Black Wire** – Wire connection for chassis ground (actuators) – 14 ga. wire

10 Pin Connector:

- **Position #1: Black Wire** – Ground – 18 ga. wire
- **Position #2: Blue/White Wire** – Wire connection to OEM actuator, unlock circuit – 18 ga. Wire
Wire length = 15 feet, non terminated end
– Optional wire connection to the 16746-U or 1-16746-U unlock circuit (Brown Wire) – 20 ga. Wire
- **Position #3: Dark Green** – Wire connection to optional dome light control circuit – 18 ga. Wire
- **Position #6: Red Wire** – Power – 18 ga. Wire
- **Position #8: Green/White Wire** – Wire connection to OEM actuator, lock circuit – 18 ga. Wire
Wire length = 15 feet, non terminated end
– Optional wire connection to the 16746-U or 1-16746-U lock circuit (Purple Wire) – 20 ga. Wire
- **Position #4, #5, #7, #9 & #10 are not used.**

Eberhard Manufacturing Company

POWER-UP Locking System – Wiring Breakdown

NOTE: Blue/White wire & Green/White wire are for optional connection to OEM power locking system. These wires can be run along with the Red power wire listed below to the cab. Run the wires along the factory wire harness using wire harness holders in the frame rails. Drill and grommet all holes in vehicle as required to prevent accidental grounding.

1-16720-6 Cab Wire Harness with Dome Light Feature:

- **Red Wire** – Wire connection to auxiliary OEM power source in cab – 10 ga. wire
– Wire length = 16 feet
- **Black Wire** – Wire connection for chassis ground – 10 ga. Wire
– Wire length = 2 feet
- **End Connector** – Connector (female) on end of cab wire harness to plug into mating connector (male) on 2-16720-7 Compartment Wire Harness or optional 2-16720-8 Expansion Relay Wire Harness.

NOTE: Red power wire can be run along with the optional Blue/White & Green/White OEM power locking connection wires to the cab. Run the wires along the factory wire harness using wire harness holders in the frame rails. Drill and grommet all holes in vehicle as required to prevent accidental grounding.

2-16720-7 Compartment Wire Harness with Dome Light Feature: **Base System for (7) compartment door locks:**

- Main trunk wires for both road side & curb side are 14 ga.
- Branch wires for connection to the actuators are 18 ga.
- Branch wires for connection to the dome lights are 14 ga.

Harness branch wire/power actuator wire connections – Retracting actuator to lock:

- Green harness wire connects to Blue power actuator wire
- Blue harness wire connects to Red power actuator wire

Harness branch wire/power actuator wire connections – Extending actuator to lock:

- Green harness wire connects to Red power actuator wire
- Blue harness wire connects to blue power actuator wire
- **End Connector** – Connector (male) on end of compartment wire harness to plug into mating connector (female) on 1-16720-6 Cab Wire Harness or optional 2-16720-8 Expansion Relay Wire Harness.
- **End Connectors** – Connectors (female) on end of compartment wire harness to plug into mating connectors (male) on 2-16720-9 Expansion Compartment Wire Harness or optional 2-16720-10 Expansion Compartment Wire Harness.

NOTE: Drill and grommet all holes in vehicle as required to prevent accidental grounding.

Eberhard Manufacturing Company

POWER-UP Locking System – Wiring Breakdown

2-16720-8 Expansion Relay Wire Harness with Dome Light Feature:

Expansion onto 2-16720-7 Compartment Wire Harness for (8) to (18) compartment door locks:

Required for 2-16720-9 Expansion Compartment Wire Harness.

- **Red Wire** – Wire connection to auxiliary OEM power source in cab – 10 ga. wire
– Wire length = 18 feet 2 in.
- **Black Wire** – Wire connection for chassis ground – 10 ga. Wire
– Wire length = 4 feet
- **End Connector** – Connector (male) on end of expansion relay wire harness to plug into mating connector (female) on 1-16720-6 Cab Wire Harness.
- **End Connectors** – Connector (female) on end of expansion relay wire harness to plug into mating connector (male) on 2-16720-7 Compartment Wire Harness.

NOTES: 1) Drill and grommet all holes in vehicle as required to prevent accidental grounding.
2) Locate and mount relay blocks in a high position in front drivers' side compartment.
Make sure the relays are in a position where they can be accessed for replacement if necessary and where they will not be damaged or come into contact with water.

2-16720-9 Expansion Compartment Wire Harness with Dome Light Feature:

Expansion onto 2-16720-7 Compartment Wire Harness for (8) to (18) compartment door locks:

Requires 2-16720-8 Expansion Relay Wire Harness.

- **Main trunk wires** for both road side & curb side are 14 ga.
- **Branch wires** for connection to the actuators are 18 ga.
- **Branch wires** for connection to the dome lights are 14 ga.

Harness branch wire/power actuator wire connections – Retracting actuator to lock:

- **Green harness wire** connects to Blue power actuator wire
- **Blue harness wire** connects to Red power actuator wire

Harness branch wire/power actuator wire connections – Extending actuator to lock:

- **Green harness wire** connects to Red power actuator wire
- **Blue harness wire** connects to Blue power actuator wire
- **End Connectors** – Connectors (male) on end of expansion compartment wire harness to plug into mating connectors (female) on 2-16720-7 Compartment Wire Harness.

NOTE: Drill and grommet all holes in vehicle as required to prevent accidental grounding.

Eberhard Manufacturing Company

POWER-UP Locking System – Wiring Breakdown

2-16720-10 Expansion Compartment Wire Harness:

Expansion onto 2-16720-7 Compartment Wire Harness for (11) compartment door locks:

- Main trunk wires for both road side & curb side are 14 ga.
- Branch wires for connection to the actuators are 18 ga.
- Branch wires for connection to the dome lights are 14 ga.

Harness branch wire/power actuator wire connections – Retracting actuator to lock:

- Green harness wire connects to Blue power actuator wire
- Blue harness wire connects to Red power actuator wire

Harness branch wire/power actuator wire connections – Extending actuator to lock:

- Green harness wire connects to Red power actuator wire
- Blue harness wire connects to Blue power actuator wire
- End Connectors – Connectors (male) on end of expansion compartment wire harness to plug into mating connectors (female) on 2-16720-7 Compartment Wire Harness.

NOTE: Drill and grommet all holes in vehicle as required to prevent accidental grounding.

16720-1 Power Actuator:

- Actuator wires are 18 ga.

Harness branch wire/power actuator wire connections – Retracting actuator to lock:

- Green harness wire connects to Blue power actuator wire
- Blue harness wire connects to Red power actuator wire

Harness branch wire/power actuator wire connections – Extending actuator to lock:

- Green harness wire connects to Red power actuator wire
- Blue harness wire connects to Blue power actuator wire

NOTES: 1) Drill and grommet all holes in vehicle as required to prevent accidental grounding.
2) Power actuators to be mounted with the protruding motor housing in an upward position to prevent condensation from pooling around the internal motor.

Eberhard Manufacturing Company

POWER-UP Locking System – Wiring Breakdown

16746-U Power 3 Way Toggle Switch Kit W/Connectors:

Non-illuminated toggle switch for the compartment door locks to a cab without an OEM power locking system.

Locate a position for mounting and cut a .93" wide x 1.74" tall opening to receive the trim plate and toggle switch. Trim plate will fit a panel of .08" to .16" thick.

Make wire connections as noted below:

- **Purple Wire** – Wire connection to the Green/White lock circuit from the 1-16720-6 Cab Wire Harness – 20 ga. wire
Wire length = 3 feet 2-1/2 in.
Use supplied butt splice connector to make wire connection.
- **Brown Wire** – Wire connection to the Blue/White unlock circuit from the 1-16720-6 Cab Wire Harness – 20 ga. Wire
Wire length = 3 feet 2-1/2 in.
Use supplied butt splice connector to make wire connection.
- **Black Wire** – Wire connection for chassis ground – 20 ga. Wire
Wire length = 3 feet 2-1/2 in.
Use supplied insulated ring terminal to make wire connection.

NOTES: 1) Drill and grommet all holes in vehicle as required to prevent accidental grounding.
2) Plastic connector on the end of the wire harness is not required. Customer to cut off and discard. Use the supplied butt splice connectors and insulated ring terminal to make the wire connections.
3) Jumpers on the 1-16720-4 Control Module need to be changed to the negative polarity settings. Position the jumpers located on the bottom end of the control module on the bottom two pins.

1-16746-U Power 3 Way Toggle Switch Kit W/Connectors:

Illuminated toggle switch for the compartment door locks to a cab without an OEM power locking system.

Locate a position for mounting and cut a .93" wide x 1.74" tall opening to receive the trim plate and toggle switch. Trim plate will fit a panel of .08" to .16" thick.

Eberhard Manufacturing Company

POWER-UP Locking System – Wiring Breakdown

Make wire connections as noted below:

- **Purple Wire** – Wire connection to the Green/White lock circuit from the 1-16720-6 Cab Wire Harness – 20 ga. wire
Wire length = 3 feet 2-1/2 in.
Use supplied butt splice connector to make wire connection.
- **Brown Wire** – Wire connection to the Blue/White unlock circuit from the 1-16720-6 Cab Wire Harness – 20 ga. Wire
Wire length = 3 feet 2-1/2 in.
Use supplied butt splice connector to make wire connection.
- **Black Wire** – Wire connection for chassis ground – 20 ga. Wire
Wire length = 3 feet 2-1/2 in.
Use supplied insulated ring terminal to make wire connection.
- **Black Wire** – Wire connection for chassis ground – 20 ga. Wire
Wire length = 3 feet 2-1/2 in.
Use supplied insulated ring terminal to make wire connection.
- **Gray Wire** – Wire connection to the parking light circuit on the vehicle – 20 ga. Wire
Wire length = 3 feet 2-1/2 in.

NOTES: 1) Drill and grommet all holes in vehicle as required to prevent accidental grounding.
2) Plastic connector on the end of the wire harness is not required. Customer to cut off and discard. Use the supplied butt splice connectors and insulated ring terminals to make the wire connections.
3) Jumpers on the 1-16720-4 Control Module need to be changed to the negative polarity settings. Position the jumpers located on the bottom end of the control module on the bottom two pins.

Eberhard Manufacturing Company

POWER-UP Locking System – Miscellaneous

Setting for positive or negative polarity:

For positive polarity – Standard setting: Position the jumpers located on the bottom end of the control module on the top two pins.

For negative polarity: Position the jumpers located on the bottom end of the control module on the bottom two pins.

Programming the key fobs:

Press the program button on the side of the control module (3) times; the red LED will then light up. Press button #1 on all of the key fobs that will be associated with the vehicle, (up to 4 key fobs), within 10 seconds of the red LED lighting up. When the LED light goes off, the key fobs are then programmed to the control module. Test each key fob by locking and unlocking the system to ensure proper operation. **NOTE:** All key fobs must be programmed at the same time using this procedure. Programming one key fob at a time will erase the previous programmed key fob.

Replacement Components:

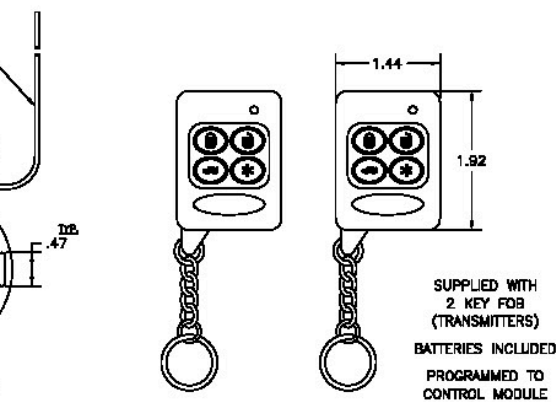
- **1-16720-6 Cab Wire Harness: In-line fuse:**
 - Power:** 40-Amp fuse – ATC style fuse or equivalent
 - Signal:** 5-Amp fuse – ATC style fuse or equivalent
 - Lights:** 15-Amp fuse – ATC style fuse or equivalent
 - Dome Light Relay:** 30-Amp - Replacement relay p/n: Hella Relay p/n: 49400B or equivalent
- **2-16720-8 Expansion Relay Wire Harness: Individual relay for each side of the vehicle.**
 - Relay:** 30-Amp - Replacement relay p/n: Hella Relay p/n: 49400B or equivalent
 - Power:** 40-Amp fuse – ATC style fuse or equivalent
- **16720-5 Key Fob (Transmitter): 23AP (12V Alkaline), 23-279 (12V Alkaline) or equivalent**

FROM SIDE
CASE

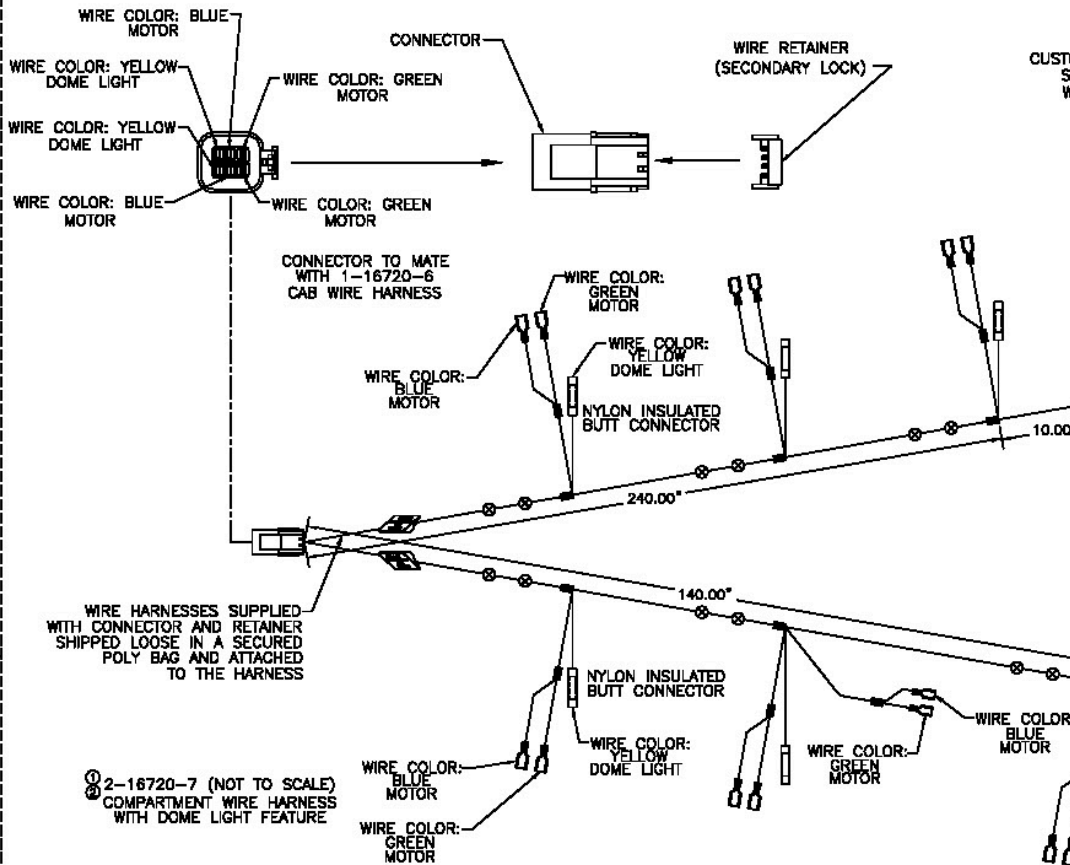
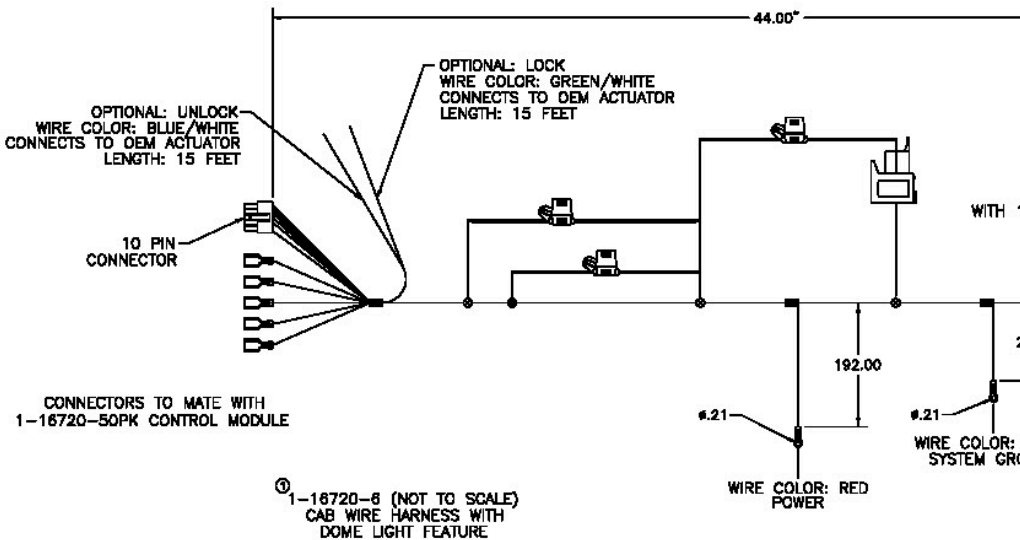
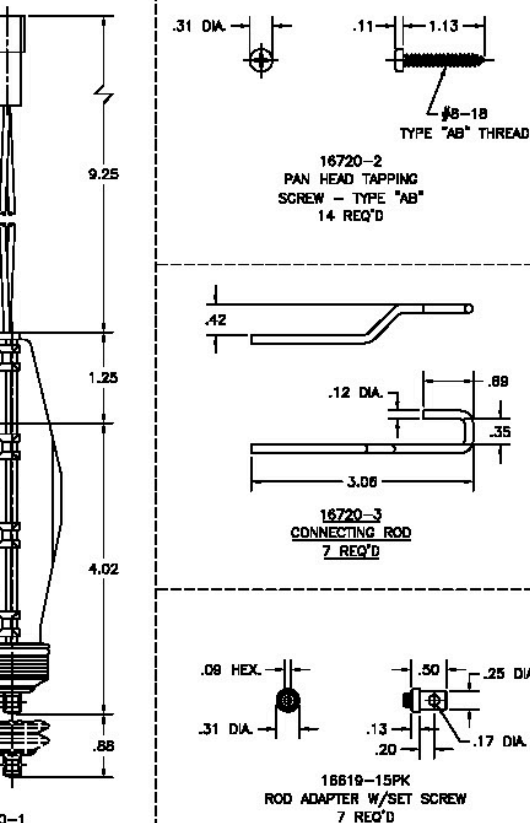
NEGATIVE
POLARITY SETTING

UNLOCK

* NOTE:
JUMPER SETTINGS FOR POSITIVE OR NEGATIVE
POLARITY SYSTEMS. STANDARD CONTROL MODULE
IS SET TO POSITIVE POLARITY SETTING.



1-16720-50PK
CONTROL MODULE
W/2 KEY FOB (TRANSMITTERS)
1 REQ'D



UNCONTROLLED COPY

REV	DATE	BY	CHKD
1	1-16720-6 (NOT TO SCALE) CAB WIRE HARNESS WITH DOME LIGHT FEATURE	SP 205	SP 205
2	2-16720-7 (NOT TO SCALE) COMPARTMENT WIRE HARNESS WITH DOME LIGHT FEATURE	SP 205	SP 205
3	2-16720-7 (NOT TO SCALE) COMPARTMENT WIRE HARNESS WITH DOME LIGHT FEATURE	SP 205	SP 205

any and engineering information disclosed herein are the property of Edward Manufacturing Company and are not to be disseminated or reproduced without the written consent of Edward Manufacturing Company. In accepting this drawing, recipient agrees to keep it confidential and not to use or permit its use in any way without the written consent of Edward Manufacturing Company. 21944 Drake Road, Chicago, IL 60641-4971 © 2015 EDWARD MFG. CO.

BOTTOM SIDE OF CASE

LOCK UNLOCK

NEGATIVE POLARITY SETTING

POSITIVE OR NEGATIVE STANDARD CONTROL MODULE POLARITY SETTING.

ALL DIP SWITCHES TO BE IN THE "ON" POSITION



FEATURES:

1. CONTROL MODULE CAN HOLD UP TO (4) KEY FOB'S (TRANSMITTERS) WITH DIFFERENT FREQUENCIES.
2. CONTROL MODULE INCORPORATES A LOCK PULSE TIMER THAT PROVIDES A .4 SECOND DELAY TO THE ACTUATORS. IF THE BUTTONS ON THE KEY FOB (TRANSMITTER) ARE HELD DOWN FOR AN EXTENDED PERIOD, THE LOCK PULSE TIMER WILL PREVENT THE ACTUATORS FROM BEING DAMAGED.
3. CONTROL MODULE INCORPORATES A TIME-OUT FEATURE THAT ELIMINATES DAMAGE TO THE SYSTEM BY SHUTTING DOWN THE SYSTEM FOR 30 SECONDS IF THE BUTTONS ON THE KEY FOB (TRANSMITTER) ARE ACTIVATED MORE THAN 8 TIMES IN A 30 SECOND PERIOD. AFTER THE 30 SECOND PERIOD, THE SYSTEM WILL FUNCTION AS NORMAL.
4. CONTROL MODULE INCORPORATES A FEATURE TO ACTIVATE/DEACTIVATE DOME LIGHTS. WHEN BUTTON #2 (UNLOCK) IS ACTIVATED, THE DOME LIGHTS WILL BE ACTIVATED FOR 10 MINUTES. WHEN BUTTON #1 (LOCK) IS ACTIVATED, THE DOME LIGHTS WILL BE TURNED OFF. WHEN BUTTON #1 (LOCK) AND BUTTON #3 (N/A) ARE PRESSED AT THE SAME TIME, THE DOME LIGHTS WILL BE ACTIVATED FOR 10 MINUTES. BY PRESSING BUTTON #1 (LOCK) AND BUTTON #4 (N/A) AT THE SAME TIME, THE DOME LIGHTS WILL BE TURNED OFF.
5. KEY FOB (TRANSMITTER) HAS A RANGE OF 150 FEET MAXIMUM.

17] 9.6

CONNECTIONS TO HARNESS:

ACTUATORS.

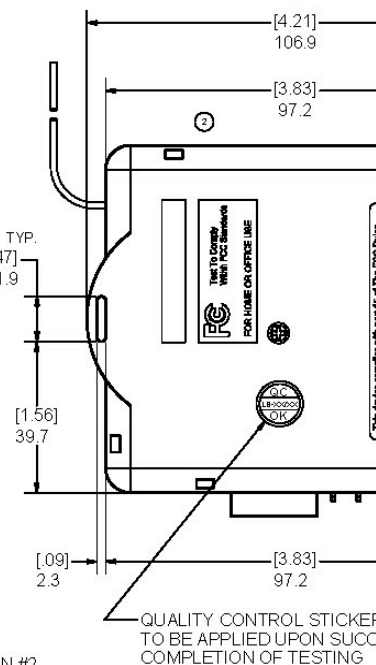
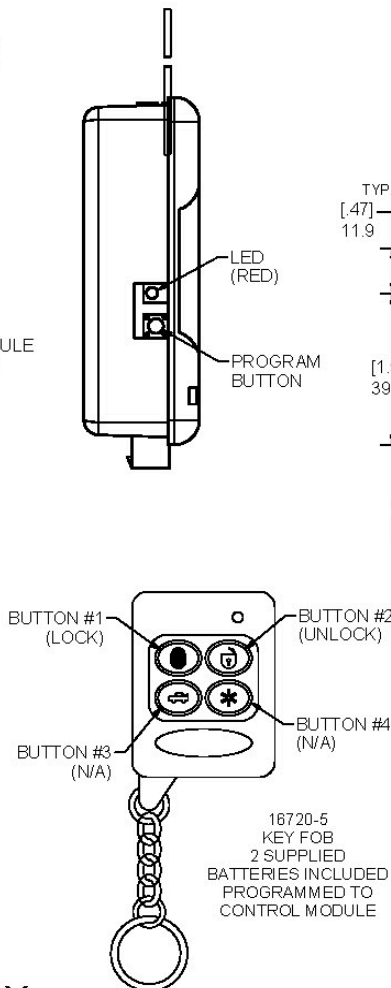
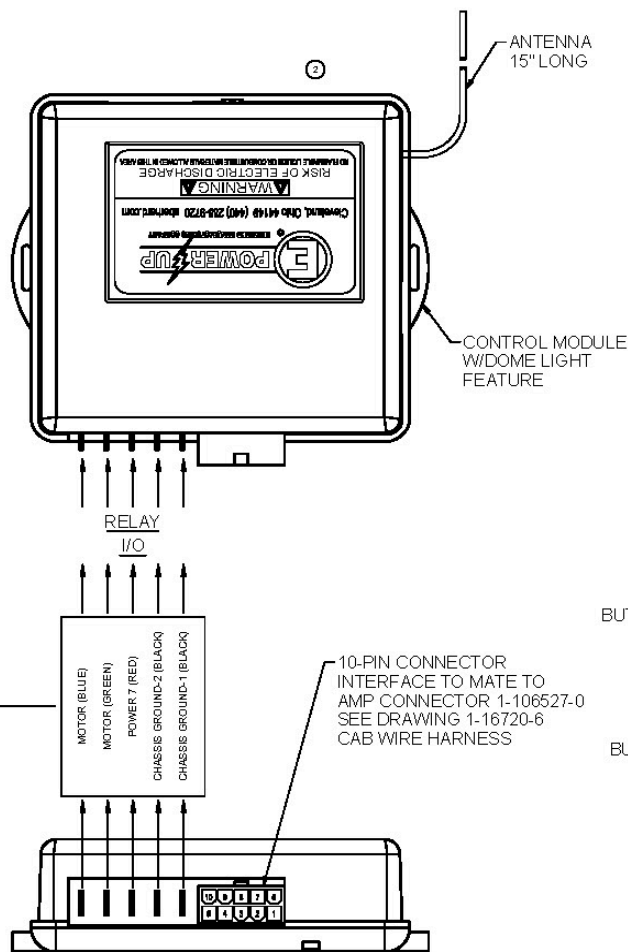
ACTUATORS.

POWER

BACK: R CHASSIS ORS.

BACK: R CHASSIS ORS.

SET 1 OF 2 DATED 12-21-04.

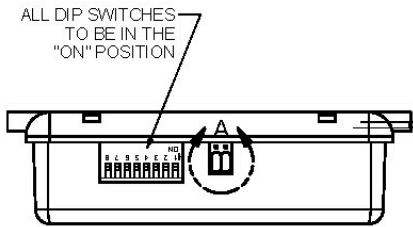
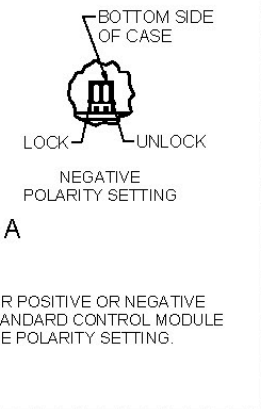


NOTE: TO PROGRAM CONTROL MODULE WITH KEY FOB (TRANSMITTERS), PRESS BUTTON ON CONTROL MODULE TO LIGHT UP, THEN PRESS BUTTON ON KEY FOB (TRANSMITTER).

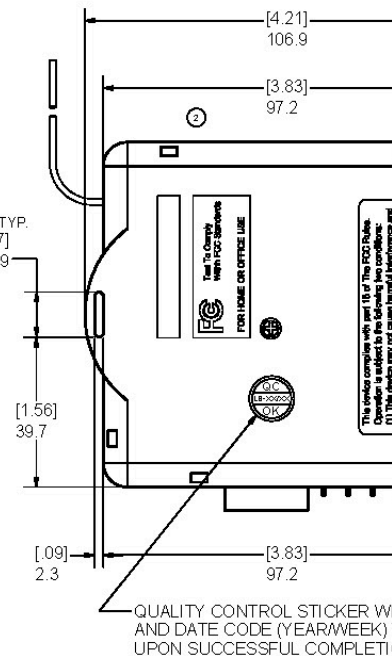
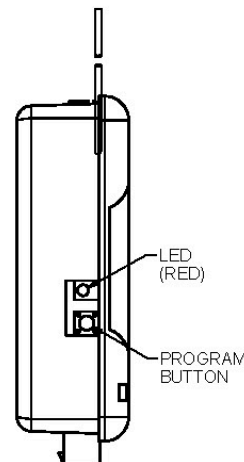
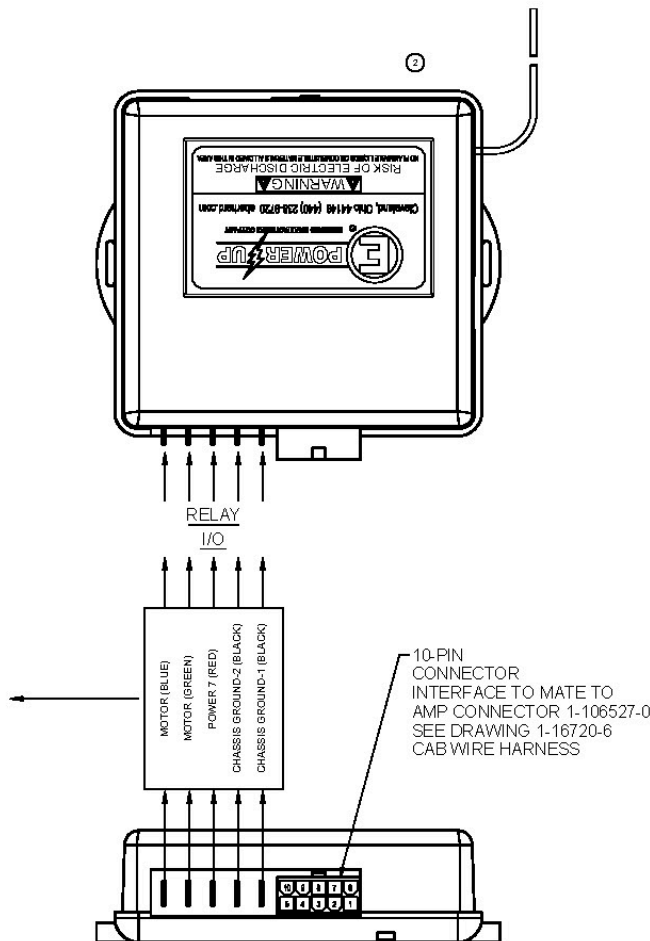
UNCONTROLLED COPY

INCH MEASUREMENTS				DATE	NAME
UNLESS OTHERWISE SPECIFIED, TOLERANCES ARE AS FOLLOWS:				3/25/13	
ANGLES:	IN	MM	CS PT	FLP	
2 PLACE DEC:	± .05	± .10	SCALE	FULL	
3 PLACE DEC:	± .015	± .03	CHS PT		
ALL HOLES:	± .015	± .12			

REVISION HISTORY		
REV	DESCRIPTION	EN
0	CONVERTED TO 3D	EN
1	REVISED NOTE, REVISED LABEL	EN
2	REVISED VIEWS	EN



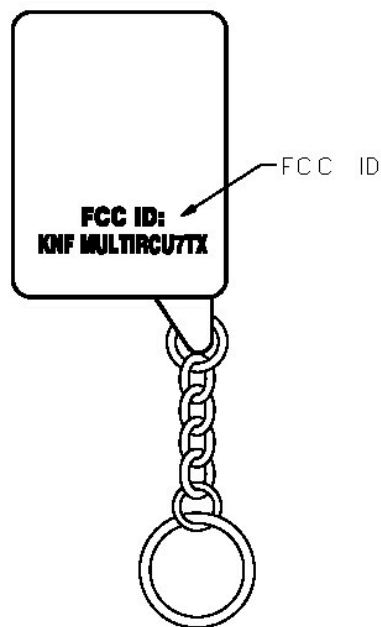
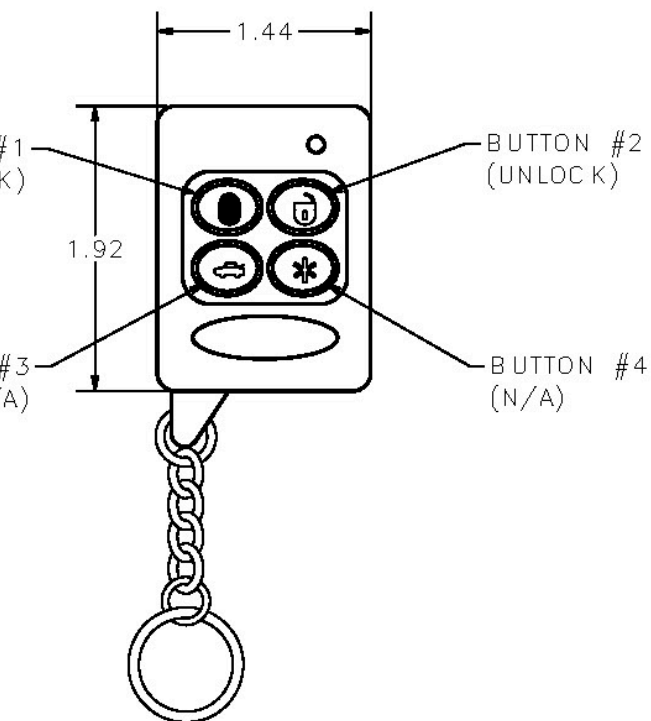
- FEATURES:**
1. CONTROL MODULE CAN HOLD UP TO (4) KEY FOB'S (TRANSMITTERS) WITH DIFFERENT CODES.
 2. CONTROL MODULE INCORPORATES A LOCK PULSE TIMER THAT PROVIDES A .4 SECOND PULSE TO THE ACTUATORS. IF THE BUTTONS ON THE KEY FOB (TRANSMITTER) ARE HELD DOWN FOR AN EXTENDED PERIOD, THE LOCK PULSE TIMER WILL PREVENT THE ACTUATORS FROM BEING DAMAGED.
 3. CONTROL MODULE INCORPORATES A TIME-OUT FEATURE THAT ELIMINATES DAMAGE TO THE ACTUATORS BY SHUTTING DOWN THE SYSTEM FOR 30 SECONDS IF THE BUTTONS ON THE KEY FOB (TRANSMITTER) ARE ACTIVATED MORE THEN 8 TIMES IN A 30 SECOND PERIOD. AFTER THE 30 SECOND PERIOD, THE SYSTEM WILL FUNCTION AS NORMAL.
 4. CONTROL MODULE INCORPORATES A HORN/HONK OUTPUT AND A LIGHT/FLASH OUTPUT.
 5. CONTROL MODULE INCORPORATES A FEATURE TO ACTIVATE/DEACTIVATE DOME LIGHTS. WHEN BUTTON #1 (LOCK) IS ACTIVATED, THE DOME LIGHTS WILL BE ACTIVATED FOR 10 MINUTES. WHEN BUTTON #1 (LOCK) AND BUTTON #3 (N/A) ARE PRESSED AT THE SAME TIME, THE DOME LIGHTS WILL BE ACTIVATED FOR 10 MINUTES. BY PRESSING BUTTON #1 (LOCK) AND BUTTON #4 (N/A) AT THE SAME TIME, THE DOME LIGHTS WILL BE TURNED OFF.
 6. KEY FOB (TRANSMITTER) HAS A RANGE OF 150 FEET MAXIMUM.



NOTE:
TO PROGRAM CONTROL MODULE TO KEY FOB (TRANSMITTERS), PRESS BUTTON ON CONTROL MODULE (3) WILL LIGHT UP, THEN PRESS BUTTON ON KEY FOB (TRANSMITTER).

UNCONTROLLED COPY

THIS DOCUMENT IS IN ACCORDANCE WITH ASME Y14.5-2003		
UNLESS OTHERWISE SPECIFIED	DATE	NAME
TOLERANCES ARE AS FOLLOWS:	3/25/2013	ENR
1. FRACTIONAL DIMENSIONS	IN	IN
2. DECIMAL DIMENSIONS	IN	IN
3. ANGLES	DEG	DEG
4. HOLE LOCATIONS	IN	IN
5. HOLE DIAMETERS	IN	IN
6. HOLE DEPTHS	IN	IN
7. HOLE RADIUS	IN	IN
8. HOLE LENGTH	IN	IN
9. HOLE WIDTH	IN	IN
10. HOLE THICKNESS	IN	IN
11. HOLE AREA	IN	IN
12. HOLE VOLUME	IN	IN
13. HOLE WEIGHT	IN	IN
14. HOLE DENSITY	IN	IN
15. HOLE STRENGTH	IN	IN
16. HOLE STIFFNESS	IN	IN
17. HOLE TENSILE	IN	IN
18. HOLE COMPRESSIVE	IN	IN
19. HOLE TORSION	IN	IN
20. HOLE BENDING	IN	IN
21. HOLE SHEAR	IN	IN
22. HOLE TENSILE	IN	IN
23. HOLE COMPRESSIVE	IN	IN
24. HOLE TORSION	IN	IN
25. HOLE BENDING	IN	IN
26. HOLE SHEAR	IN	IN
27. HOLE TENSILE	IN	IN
28. HOLE COMPRESSIVE	IN	IN
29. HOLE TORSION	IN	IN
30. HOLE BENDING	IN	IN
31. HOLE SHEAR	IN	IN
32. HOLE TENSILE	IN	IN
33. HOLE COMPRESSIVE	IN	IN
34. HOLE TORSION	IN	IN
35. HOLE BENDING	IN	IN
36. HOLE SHEAR	IN	IN
37. HOLE TENSILE	IN	IN
38. HOLE COMPRESSIVE	IN	IN
39. HOLE TORSION	IN	IN
40. HOLE BENDING	IN	IN
41. HOLE SHEAR	IN	IN
42. HOLE TENSILE	IN	IN
43. HOLE COMPRESSIVE	IN	IN
44. HOLE TORSION	IN	IN
45. HOLE BENDING	IN	IN
46. HOLE SHEAR	IN	IN
47. HOLE TENSILE	IN	IN
48. HOLE COMPRESSIVE	IN	IN
49. HOLE TORSION	IN	IN
50. HOLE BENDING	IN	IN
51. HOLE SHEAR	IN	IN
52. HOLE TENSILE	IN	IN
53. HOLE COMPRESSIVE	IN	IN
54. HOLE TORSION	IN	IN
55. HOLE BENDING	IN	IN
56. HOLE SHEAR	IN	IN
57. HOLE TENSILE	IN	IN
58. HOLE COMPRESSIVE	IN	IN
59. HOLE TORSION	IN	IN
60. HOLE BENDING	IN	IN
61. HOLE SHEAR	IN	IN
62. HOLE TENSILE	IN	IN
63. HOLE COMPRESSIVE	IN	IN
64. HOLE TORSION	IN	IN
65. HOLE BENDING	IN	IN
66. HOLE SHEAR	IN	IN
67. HOLE TENSILE	IN	IN
68. HOLE COMPRESSIVE	IN	IN
69. HOLE TORSION	IN	IN
70. HOLE BENDING	IN	IN
71. HOLE SHEAR	IN	IN
72. HOLE TENSILE	IN	IN
73. HOLE COMPRESSIVE	IN	IN
74. HOLE TORSION	IN	IN
75. HOLE BENDING	IN	IN
76. HOLE SHEAR	IN	IN
77. HOLE TENSILE	IN	IN
78. HOLE COMPRESSIVE	IN	IN
79. HOLE TORSION	IN	IN
80. HOLE BENDING	IN	IN
81. HOLE SHEAR	IN	IN
82. HOLE TENSILE	IN	IN
83. HOLE COMPRESSIVE	IN	IN
84. HOLE TORSION	IN	IN
85. HOLE BENDING	IN	IN
86. HOLE SHEAR	IN	IN
87. HOLE TENSILE	IN	IN
88. HOLE COMPRESSIVE	IN	IN
89. HOLE TORSION	IN	IN
90. HOLE BENDING	IN	IN
91. HOLE SHEAR	IN	IN
92. HOLE TENSILE	IN	IN
93. HOLE COMPRESSIVE	IN	IN
94. HOLE TORSION	IN	IN
95. HOLE BENDING	IN	IN
96. HOLE SHEAR	IN	IN
97. HOLE TENSILE	IN	IN
98. HOLE COMPRESSIVE	IN	IN
99. HOLE TORSION	IN	IN
100. HOLE BENDING	IN	IN



PROGRAMMING THE KEY FOBs:

TO PROGRAM THE CONTROL MODULE TO ADDITIONAL KEY FOB (TRANSMITTERS), PRESS THE PROGRAM BUTTON ON CONTROL MODULE (3) TIMES, LED WILL LIGHT UP, THEN PRESS BUTTON #1 ON ALL OF THE KEY FOBs THAT WILL BE ASSOCIATED WITH THE VEHICLE, (UP TO 4 KEY FOBs), WITHIN 10 SECONDS OF THE LED LIGHTING UP. TEST EACH KEY FOB BY LOCKING AND UNLOCKING THE SYSTEM TO ENSURE PROPER OPERATION.

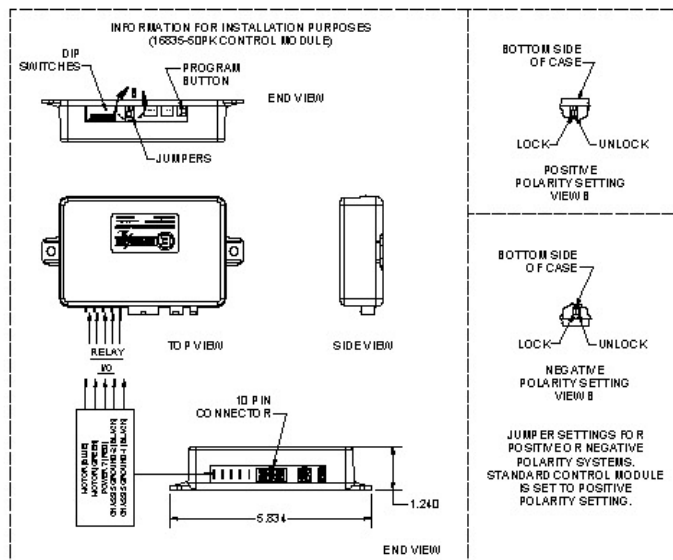
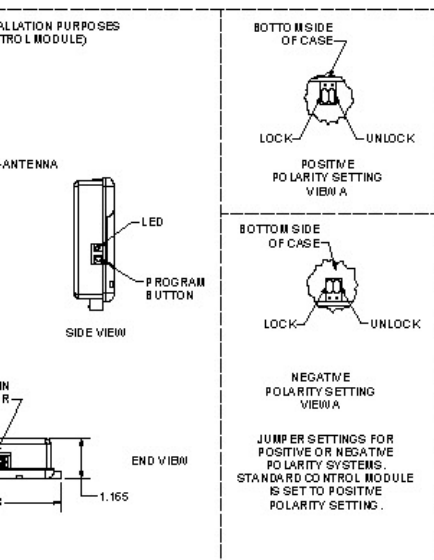
NOTE: ALL KEY FOBs MUST BE PROGRAMMED AT THE SAME TIME USING THIS PROCEDURE. PROGRAMMING ONE KEY FOB AT A TIME WILL ERASE THE PREVIOUS PROGRAMMED KEY FOB.

UNCONTROLLED COPY

16720-4 CONTROL MODULE ONLY.
WITH KEY FOB (TRANSMITTER).
SERIES:
() OR 23-279 (12V ALKALINE)

SUPERSEDES DRAWING 16720-5 SHEET 1 OF 2 DATED 1-10-07.

THIS DOCUMENT IS IN ACCORDANCE WITH ASME Y14.15-2009					
LINEAR MEASURE: INCH				DATE 3/29/2013	NAME K
UNLESS OTHERWISE SPECIFIED TOLERANCES ARE AS FOLLOWS:				DR. BY FLP	
				SCALE FULL	
				CHK. BY —	
ANGLES:				±2' ±2'	MATERIAL —
2 PLACE DEC.:				±.03 ±.76	
3 PLACE DEC.:				±.015 ±.38	
ALL HOLES:				±.005 ±.13	



NOTES:
1. DIMENSIONS ARE MEASURED FROM BACK TO CENTER OF BREAKOUTS OR SPLICES.
2. HARNESS IS COIL-WRAPPED IN DIAMETER THAN 10 INCHES AND SHIPPED IN A SEAL.
3. HARNESS IS 100% CONTINUITY CHECKED.

UNCONTROLLE

METRIC

DIMENSIONS ARE IN MILLIMETERS	
DIMENSION	TOLERANCE
ALL DIMENSIONS	± 0.13

DIMENSIONS SHOWN IN INCHES

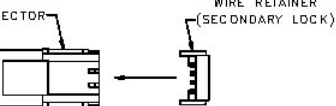
1 HED DOCL
1
198 2
1019
4 HED 10
2 PIEL
3 PIEL
ALL 10

ER ACTUATOR:

BLUE POWER ACTUATOR WIRE
RED POWER ACTUATOR WIRE

RED POWER ACTUATOR WIRE
BLUE POWER ACTUATOR WIRE

ES IN LOCATIONS
BY SNAPPING
(SECONDARY LOCK)
SHOWN



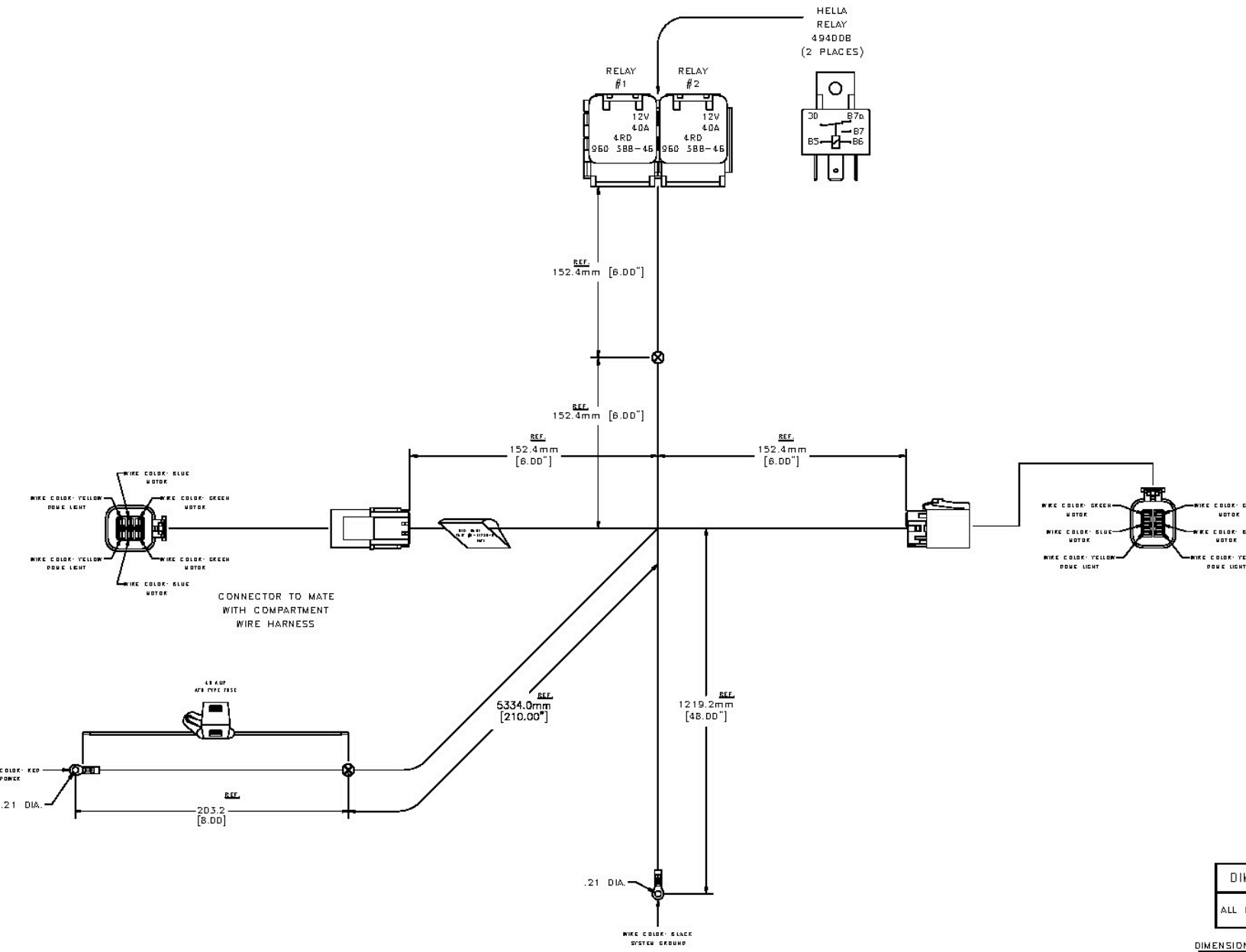
PLIED
RETAINER
SECURED
ACHED
S

CTORS,
HE END OF TERMINALS.
ETER NO LARGER
BAG.

UNCONTROLLED COPY

METRIC	
DIMENSIONS ARE IN MILLIMETERS	
DIMENSION	TOLERANCE (UNLESS OTHERWISE SPECIFIED)
ALL DIMENSIONS	±25.0 mm (±.99")

DIMENSIONS SHOWN IN [] ARE IN INCHES



UNCONTROLLED COPY

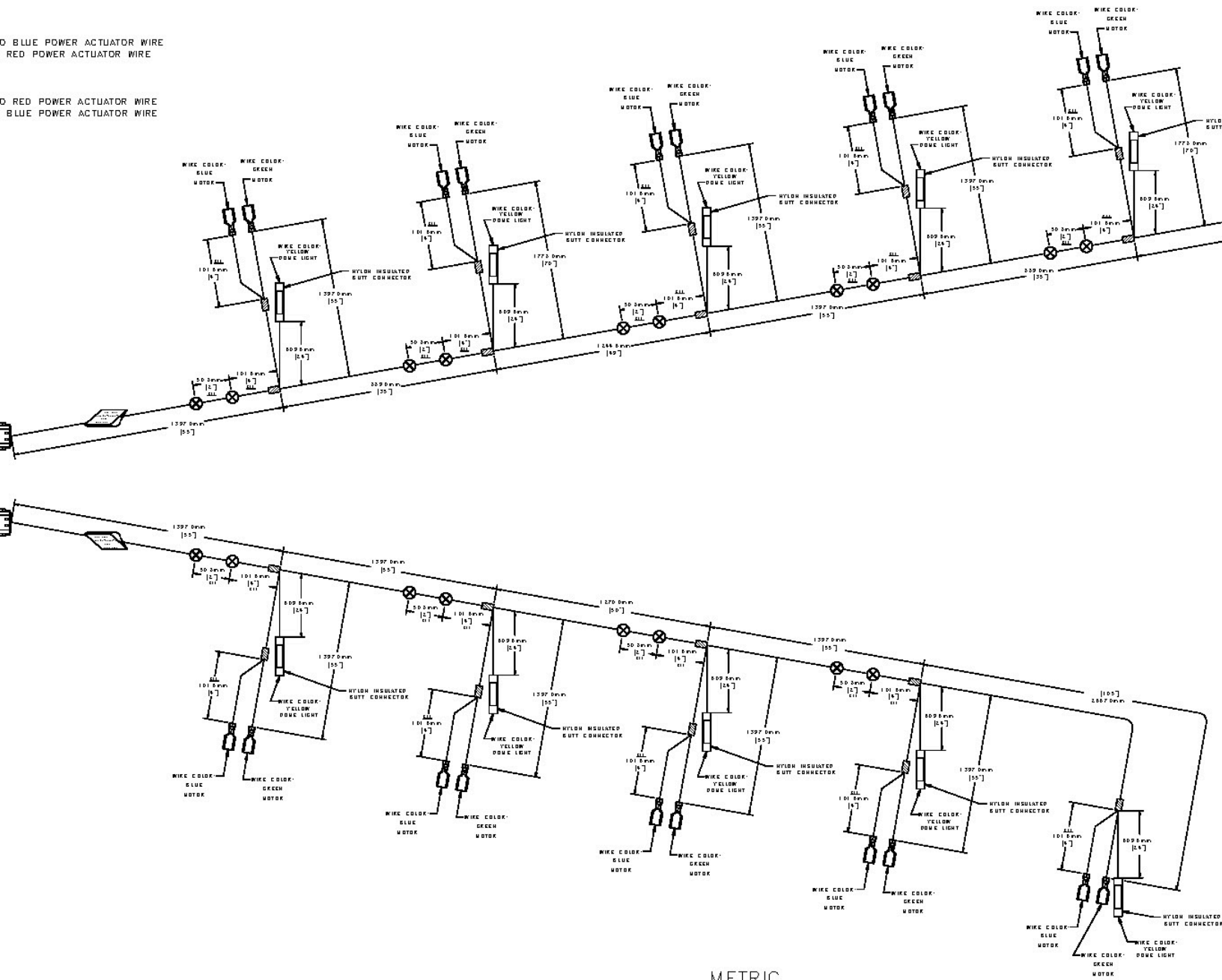
UNCONTROLLED COPY

Wire Manufacturing Company are shown to be standard sizes of conductors unless otherwise specified.
 All wires are to be insulated unless otherwise specified. See the notes on page 2 for more details.

POWER ACTUATOR:

BLUE POWER ACTUATOR WIRE
 RED POWER ACTUATOR WIRE

RED POWER ACTUATOR WIRE
 BLUE POWER ACTUATOR WIRE



CONNECTORS.
 TO THE END OF TERMINALS.
 DIAMETER NO LARGER
 LY BAG.

UNCONTROLLED COPY

METRIC
 DIMENSIONS ARE IN MILLIMETERS

DIMENSION	TOLERANCE (UNLESS OTHERWISE SPECIFIED)
ALL DIMENSIONS	± 25.0 mm [$\pm .99$ "]

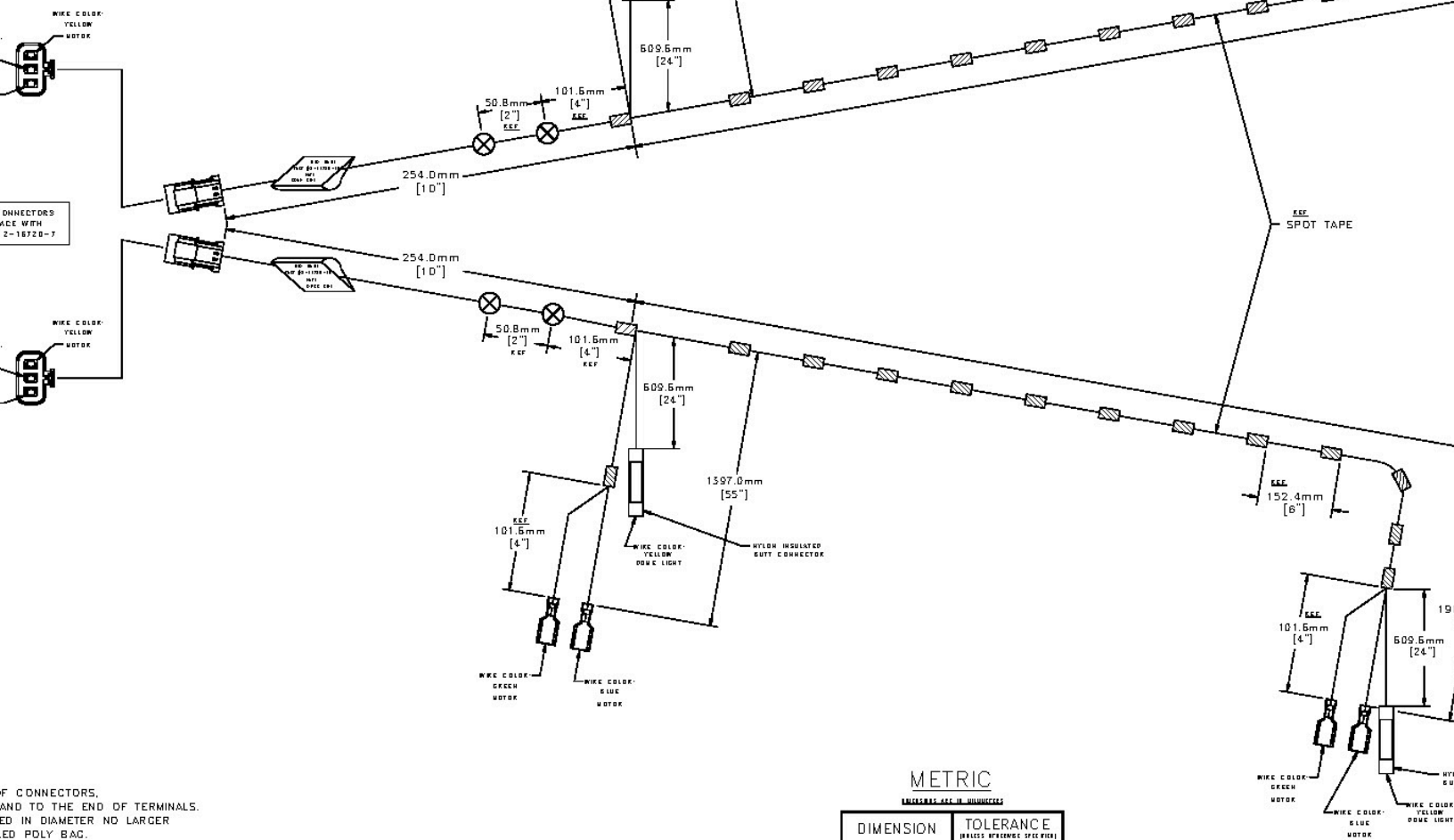
DIMENSIONS SHOWN IN [] ARE IN INCHES

ACTUATOR:

POWER ACTUATOR WIRE
POWER ACTUATOR WIRE

POWER ACTUATOR WIRE
POWER ACTUATOR WIRE

CONNECTOR TO MATE
DIFFERENT WIRE HARNESS



OF CONNECTORS,
AND TO THE END OF TERMINALS.
ED IN DIAMETER NO LARGER
ED POLY BAG.
ED.

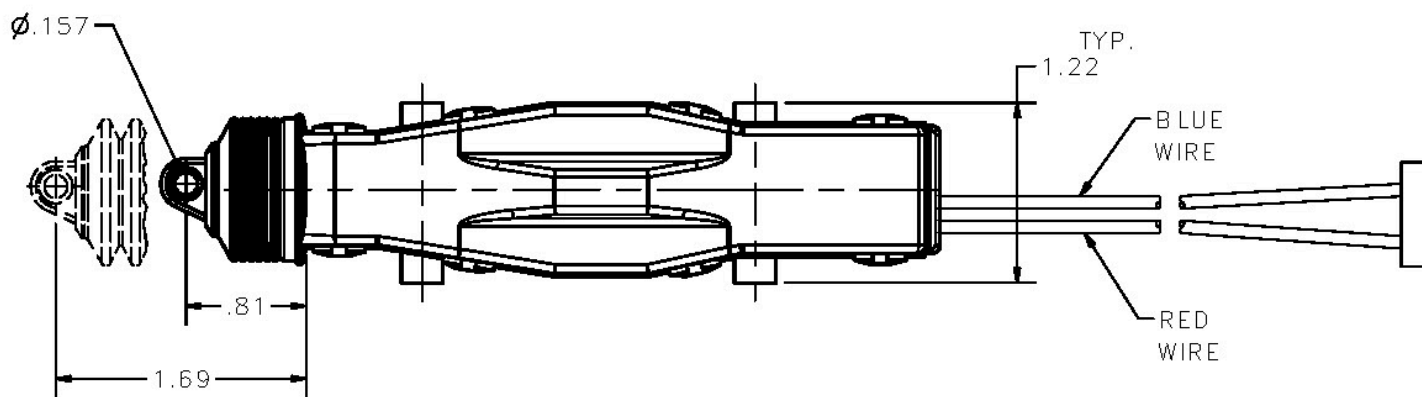
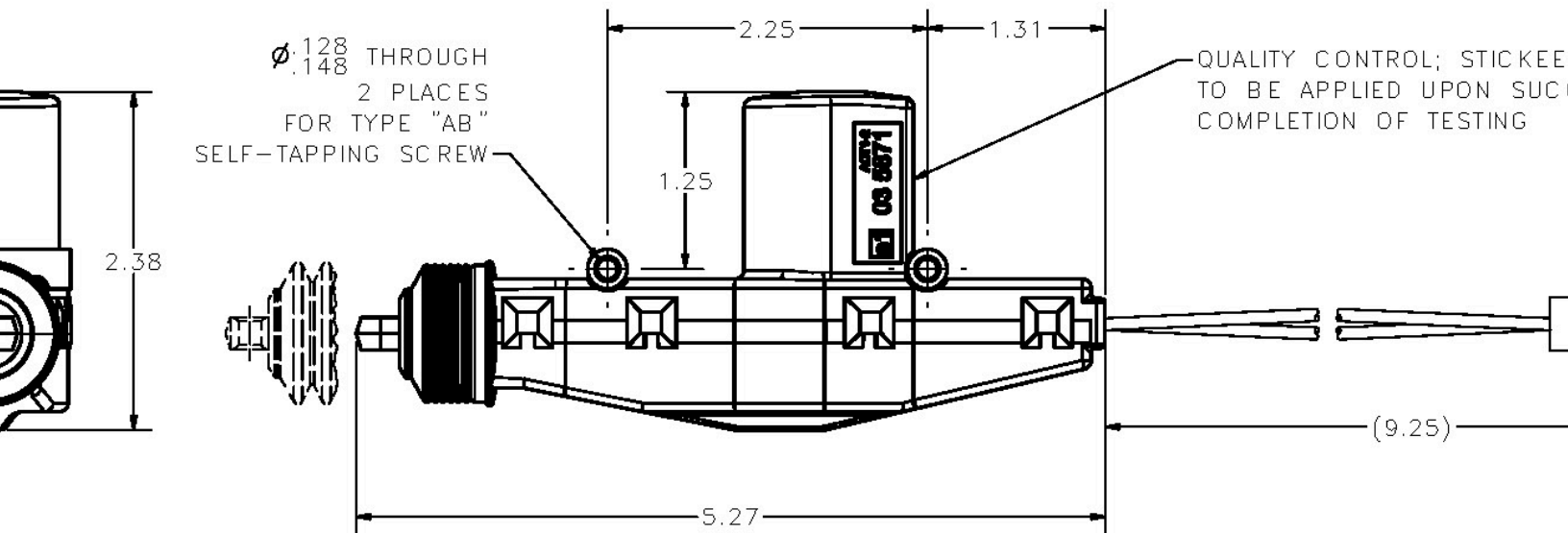
METRIC

UNLESS OTHERWISE SPECIFIED

DIMENSION	TOLERANCE
ALL DIMENSIONS	±25.0 mm [±.99"]

DIMENSIONS SHOWN IN [] ARE IN INCHES

UNCONTROLLED COPY



UNCONTROLLED COPY

3 VDC TO 13.7 VDC
: 4.5 A (MAX.)
-18.4° F TO +188.6° F

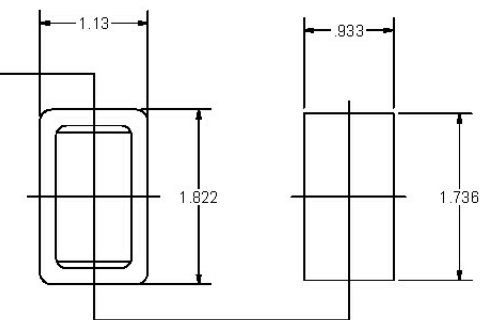
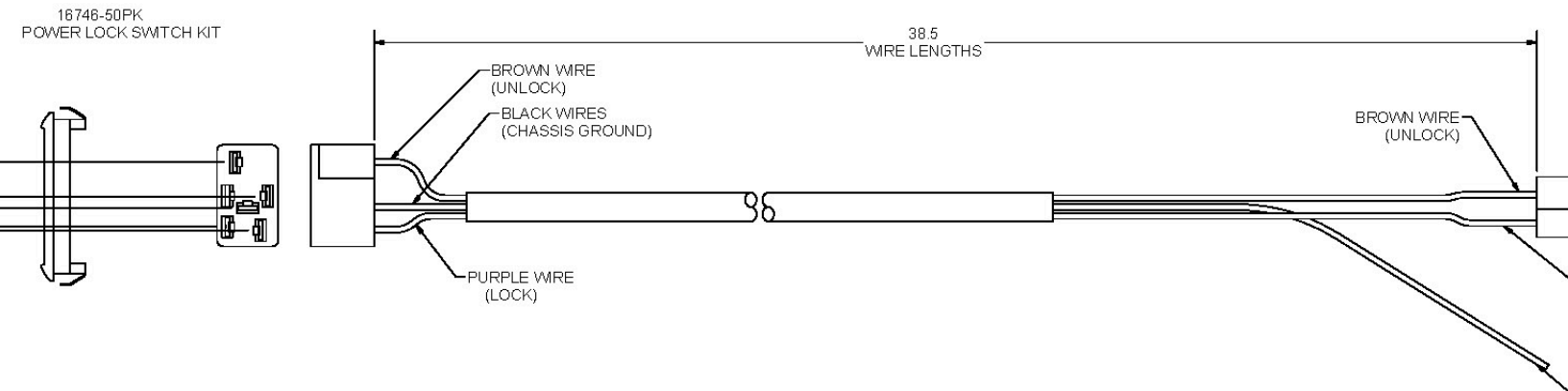
SUPERSEDES DRAWING 16720-1 SHEET 1 OF 2 DATED 3-14-03.

THIS DOCUMENT IS IN ACCORDANCE WITH ASME Y14.15-2009			
LINEAR MEASURE: INCH		DATE 3/29/2013	NAME
UNLESS OTHERWISE SPECIFIED TOLERANCES ARE AS FOLLOWS:		DR. BY FLP	MATERIAL
ANGLES:	$\pm 2^\circ$	SCALE FULL	
2 PLACE DEC.:	$\pm .03$	C.H.K. BY	
3 PLACE DEC.:	$\pm .015$		
ALL HOLES:	$\pm .005$		

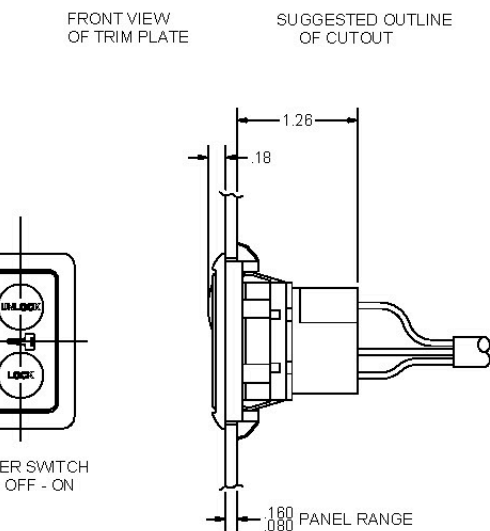
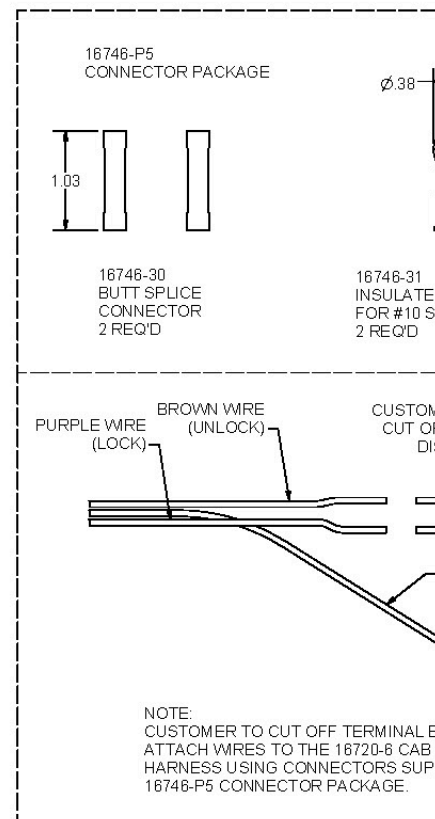
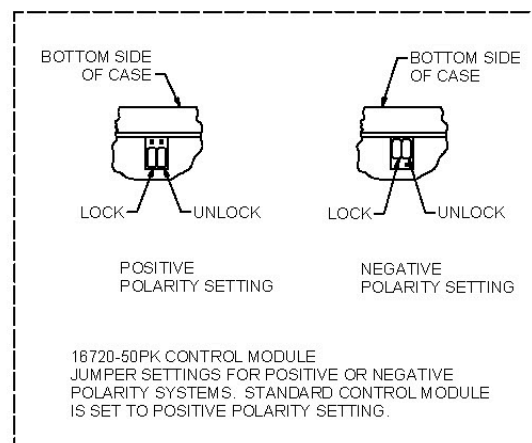
EB

Information and engineering information disclosed herein are the property of Eberhard May Manufacturing Company and are not to be disseminated or reproduced without its express written consent. In accepting use of this drawing, recipient agrees to keep it confidential and not to use or permit its use in any way without Company's prior written consent. © 2015 Eberhard May Co.

REVISION HISTORY	
REV	DESCRIPTION
1	CONVERTED TO 3D



- NOTES:
1. BROWN WIRE (UNLOCK) - CONNECTS TO THE BLUE/WHITE WIRE IN THE 16720-6 CAB WIRE HARNESS.
 - PURPLE WIRE (LOCK) - CONNECTS TO THE GREEN/WHITE WIRE IN THE 16720-6 CAB WIRE HARNESS.
 - BLACK WIRES (CHASSIS GROUND)
 - GRAY WIRE (ILLUMINATION) - CONNECTS TO THE PARKING LIGHT CIRCUIT ON THE VEHICLE.
 2. JUMPERS ON THE 16720-50PK CONTROL MODULE WILL NEED TO BE CHANGED TO NEGATIVE POLARITY.
 3. 1-16746-50PK POWER LOCK SWITCH KIT AND 1-16746-P5 CONNECTOR PACKAGE TO BE SHIPPED LOOSE, BULK PACKED.

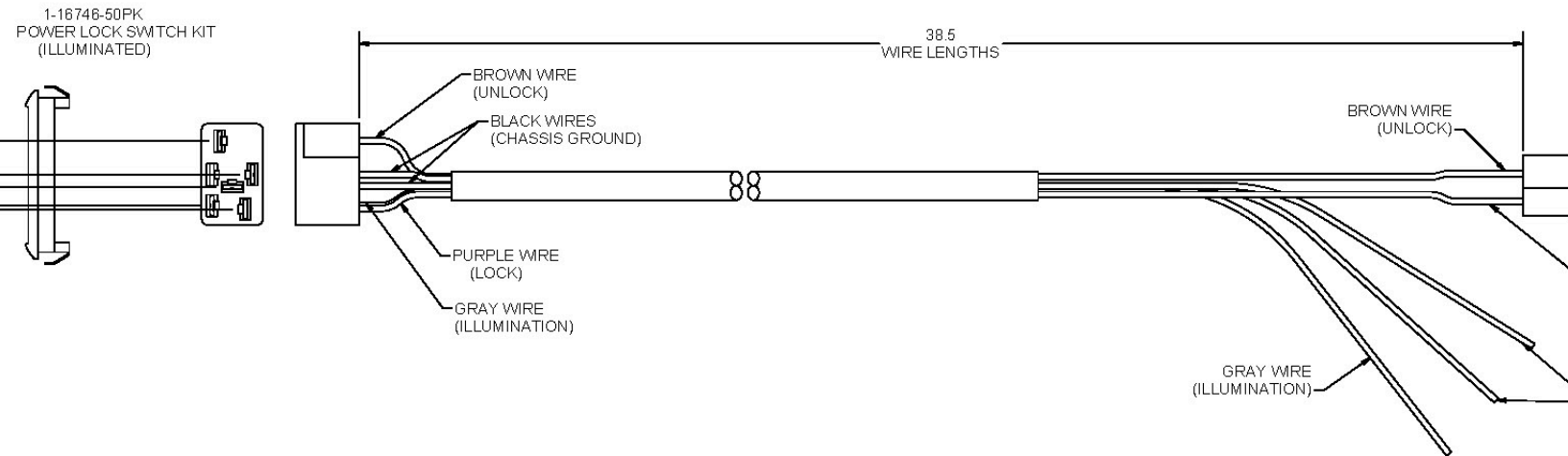


UNCONTROLLED COPY

SUPERSEDES DRAWING 16746-U DATED 12-17-03

THIS DOCUMENT IS IN ACCORDANCE WITH ASME Y14.15-2009	
UNLESS OTHERWISE SPECIFIED	DATE
TOLERANCES ARE AS FOLLOWS:	1/20/2016
AND LES:	IN
2 PLACE DEC:	4.03 4.76
3 PLACE DEC:	4.015 4.38
ALL DIMS:	4.00 4.12
DR BY	FLP
SCALE	FULL
CW BY	
MATERIAL	

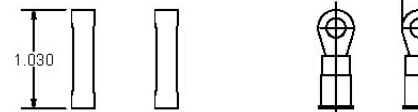
REVISION HISTORY		
REV	DESCRIPTION	DATE
1	CONVERTED TO 3D	5/1/2016



NOTES:

1. BROWN WIRE (UNLOCK) - CONNECTS TO THE BLUE/WHITE WIRE IN THE 16720-6 CAB WIRE HARNESS.
PURPLE WIRE (LOCK) - CONNECTS TO THE GREEN/WHITE WIRE IN THE 16720-6 CAB WIRE HARNESS.
BLACK WIRES (CHASSIS GROUND)
GRAY WIRE (ILLUMINATION) - CONNECTS TO THE PARKING LIGHT CIRCUIT ON THE VEHICLE.
2. JUMPERS ON THE 16720-50PK CONTROL MODULE WILL NEED TO BE CHANGED TO NEGATIVE POLARITY.
3. 1-16746-50PK POWER LOCK SWITCH KIT AND 1-16746-P5 CONNECTOR PACKAGE TO BE SHIPPED LOOSE, BULK PACKED.

1-16746-P5
CONNECTOR PACKAGE

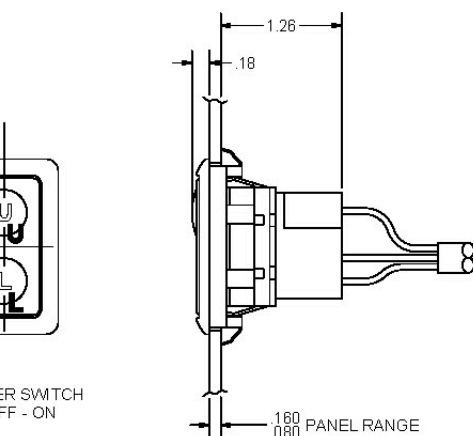


16746-30
BUTT SPLICE
CONNECTOR
2 REQ'D

16746-31
INSULATED
FOR #10 S
2 REQ'D

FRONT VIEW
OF TRIM PLATE

SUGGESTED OUTLINE
OF CUTOUT



BOTTOM SIDE
OF CASE

LOCK UNLOCK

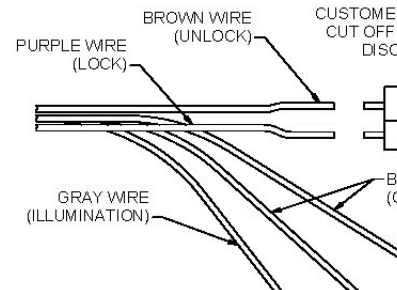
POSITIVE
POLARITY SETTING

BOTTOM SIDE
OF CASE

LOCK UNLOCK

NEGATIVE
POLARITY SETTING

16720-50PK CONTROL MODULE
JUMPER SETTINGS FOR POSITIVE OR NEGATIVE
POLARITY SYSTEMS. STANDARD CONTROL MODULE
IS SET TO POSITIVE POLARITY SETTING.



NOTE:
CUSTOMER TO CUT OFF TERMINAL B
ATTACH WIRES TO THE 16720-6 CAB WIRE
HARNESS USING CONNECTORS SUPPLIED
WITH 1-16746-P5 CONNECTOR PACKAGE.

UNCONTROLLED COPY

SUPERSEDES DRAWING 1-16746-U DATED 12-17-03

THIS DOCUMENT IS IN ACCORDANCE WITH ASME Y14.15-2003			DATE 1/20/2016		NAME P (ILLUMINATION)
UNLESS OTHERWISE SPECIFIED TOLERANCES ARE AS FOLLOWS:			DRY FLP		
IN			JUL		SCALE FULL
AND LES:			JUL		
2 PLACES DEC:			0.001		MATERIAL
3 PLACES DEC:			0.015		
ALL DIMS:			0.005		

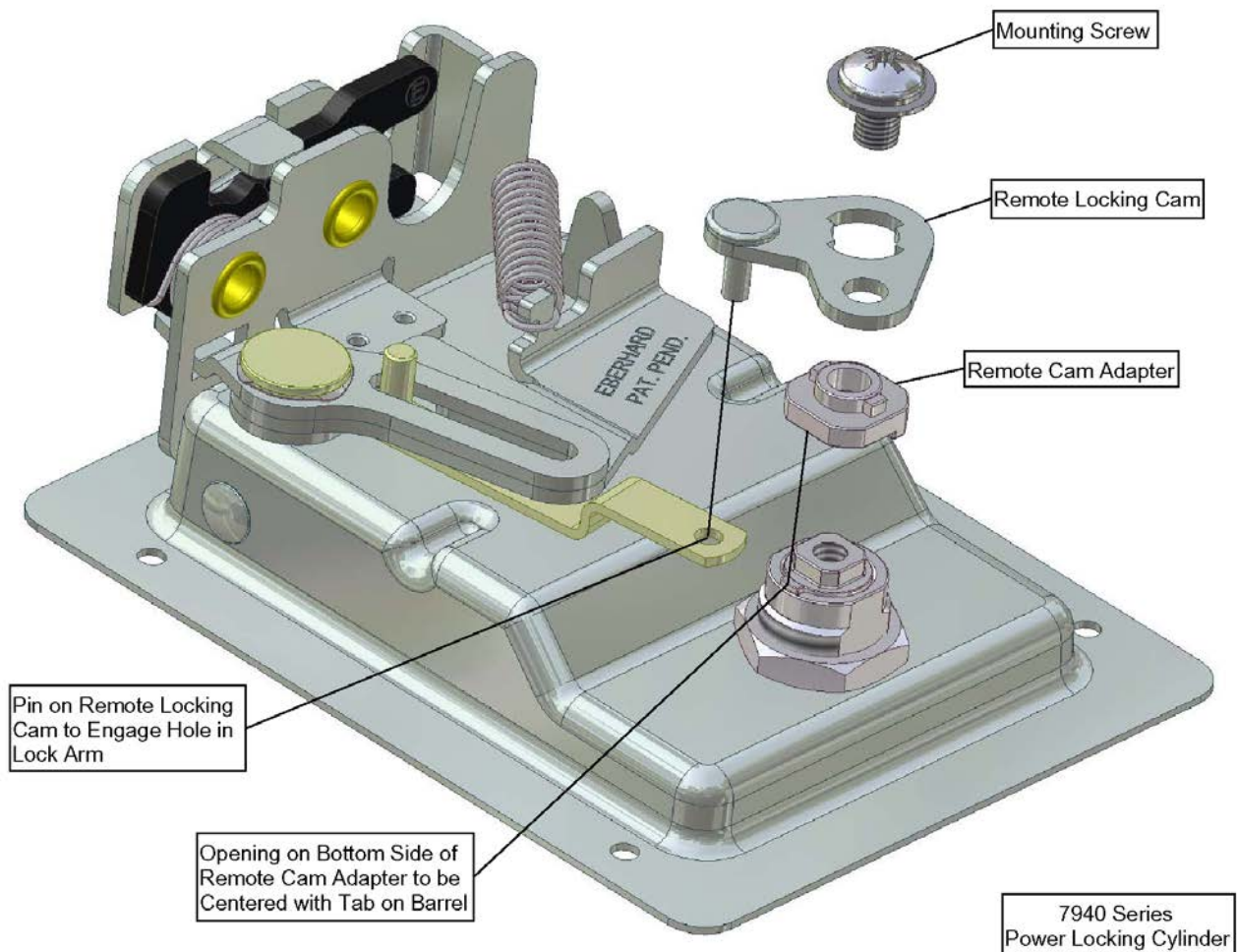
Eberhard Manufacturing Company

POWER-UP Locking System – Key Cylinder

Typical assembly of a power locking key cylinder:

Configuration of power locking key cylinders will vary depending on the application. The ability to make various handle configurations power locking will need to be reviewed and verified on a product by product basis.

For reference only, the components are to be assembled as shown to enable proper function with the power actuators. After assembly, the key cylinder and remote locking cam are to be able to rotate 90° clockwise and counterclockwise independently. The key is to be removable in one position only. This will enable the power actuator to operate the cam when the key is not installed.



COMPONENTS

DESCRIPTION

- 1) Power Lock Activator
- 2) Power Activator Mtg. Screw
- Phillips Pan head #8-18 Type AB Thread

Control Module Kit includes:

- 1) Control Module
- 2) Key Fob Transmitter

Parts (for 1-7 activators)

- 1) Cab Wiring Harness
- 1) Compartment Wiring Harness

Parts (for 8-18 activators)

- Expansion Relay Harness
- Expansion Compartment Wiring Harness

Optional power toggle switch kit can be used for cab actuation.

To add additional key fobs, press the control module three times. LED will light (#1) on the key fob(s).

Can be set up for positive or negative

Designed for customer requests.

Operation is independent from the OEM power source. For service or maintenance, compartments have a separate and unique key fob that is not the OEM remote.

TECHNICAL DATA

Battery installed.
Available.

8.8 VDC to 13.7 VDC
4.5 A (max)
-18.4° F to +188.6° F
7.868 lbf.



EBERHARD®

Industrial, Vehicular & Specialty Systems

A Division of The Eastern Company

EBERHARD MANUFACTURING COMPANY

21944 Drake Road
Cleveland, Ohio 44149
Phone: (440) 238-9720
Toll Free: (800) 334-6706
Fax: (440) 572-2732
www.eberhard.com



*A Wholly Owned Subsidiary of
The Eastern Company*

EBERHARD HARDWARE MFG., LTD.

Box 367
Tillsonburg, Ontario N4G 4H8
Phone: (519) 842-8457
Toll Free: (800) 567-3344
Fax: (519) 688-0575
www.eberhardcanada.com



For Eberhard's complete catalog of over 2400 latching systems, please contact our sales department.

POWER

LOCKING SYSTEMS



EBERH



LOCKING SYSTEMS FROM EBERHARD



The POWER UP Locking System can be mated with many popular Eberhard latches including single and multipoint paddles, Paddle, Rotary, "T" and "D" handle style latches. Consult the factory to select the proper connecting components to "Power Up" your equipment.



CONVENIENCE & SECURITY

LOCK UP TO 18 INDIVIDUAL LATCHES WITH ONE TOUCH OF A BUTTON!

- **SECURITY**

All latches are locked at one time.

- **CONVENIENCE**

Simple one-button touch secures all latches with a range of up to 150 feet.

- **RELIABILITY**

Proven operation of components in simulated cycle-testing up to 200,000 cycles.

- **DURABLE**

CONSTRUCTION
Sealed actuators and insulated plug-in connections.

- **COMPATIBILITY**

Operates with existing power lock systems. Ideal on Service Bodies, Ambulances, RVs, Buses, or their Single or Multi-Latch power locking systems.

THE EBERHARD CONTROL MODULE

incorporates a lock pulse timer that provides a .4 second pulse from the control module to the actuators. If the buttons on the key fob (transmitter) are held down for an extended period, the lock pulse timer will prevent the actuators from being damaged.

The control module incorporates a time-out feature that eliminates damage to the actuators by shutting down the systems for thirty seconds if the buttons on the key fob (transmitter) are activated more than eight times in a thirty-second period. After the thirty-second time-out period, the system will function as normal.

The Power-Up control module can be programmed to accept up to four key fobs to operate the same power system.

If a key fob is lost or damaged, the control module can be programmed to accept a new key fob signal.



POWER UP LOCKING SYSTEM

service bodies, ambulances, RVs, or for power locking of compartments.

Eberhard has for over 140 years been a manufacturer of vehicular and industrial rescue equipment, utility and van bodies, equipment, as well as tonneau covers, electrical panels, electronic enclosures.

