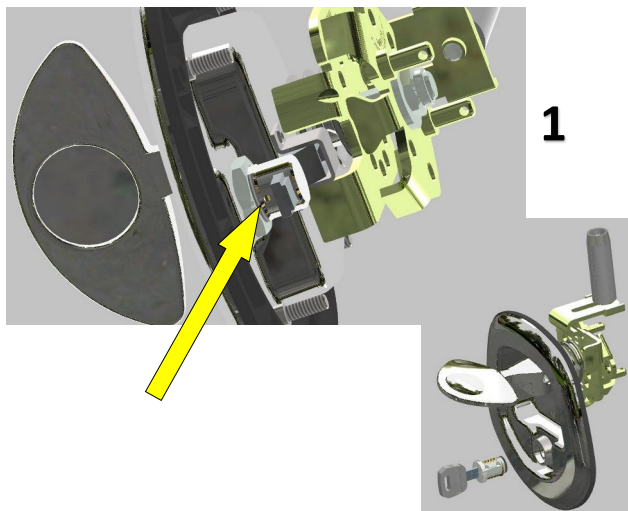
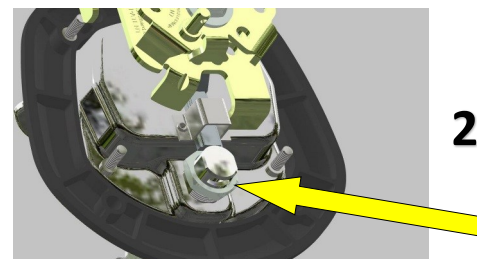
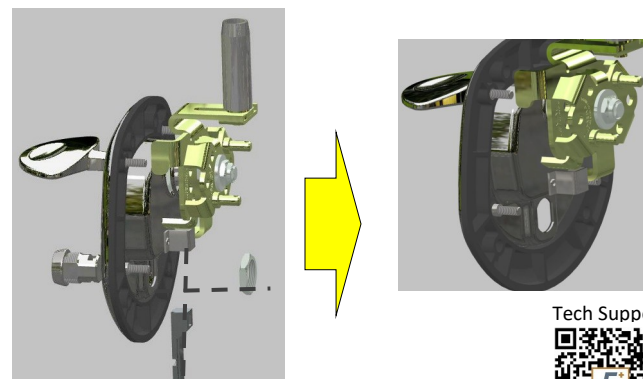


**ES-28400-S****EBERHARD****Whale T-Handle****EM Power Module Kit****Installation Guide****WHALE T-HANDLE PREP**

To REMOVE the KEY CYLINDER, Depress RETAINING RING thru the HOLE in the BARREL and pull out KEY CYLINDER using the KEY inserted in KEY CYLINDER

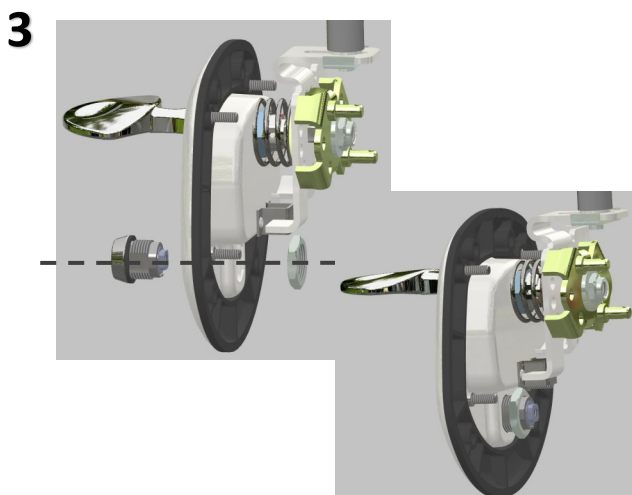


Loosen BARREL NUT, and push BARREL forward to allow for BOLT to be removed

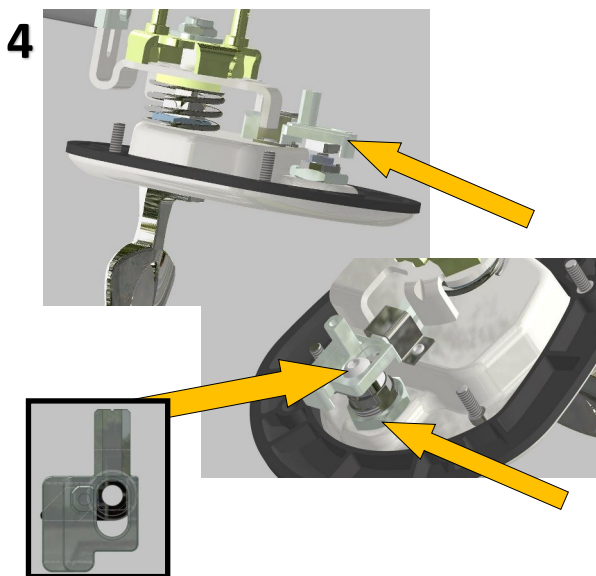


Completely remove BARREL NUT, BARREL and BOLT.

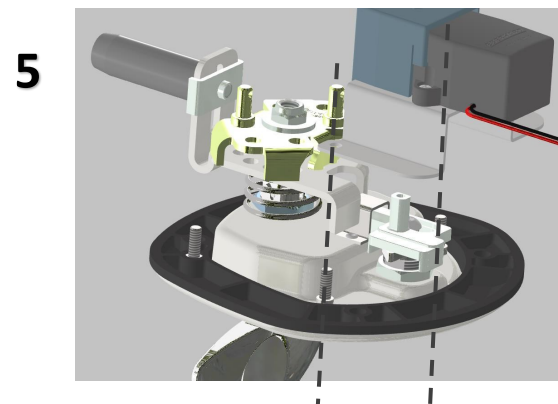
Tech Support

**EM Power Module Kit INSTALLATION**

Insert NEW LOCK ASSEMBLY into hole, and thread NUT partial on



Stack the BOLT on top of CAM (see alignment) position on LOCK ASSEMBLY using the BUTTON HEAD SCREW tighten fully.
Tighten BARREL NUT on LOCK ASSEMBLY.



Install EM POWER MODULE BRACKET ASSEMBLY, aligning the POWER MODULE PIN to the BOLT, and position bracket over LOWER STUDS



Tech Support