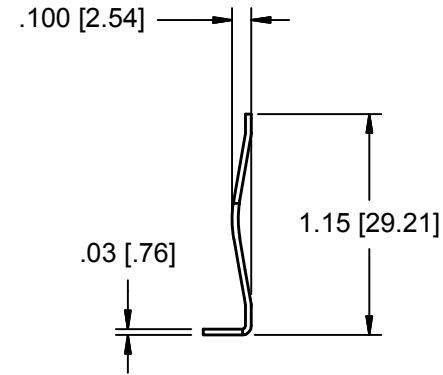
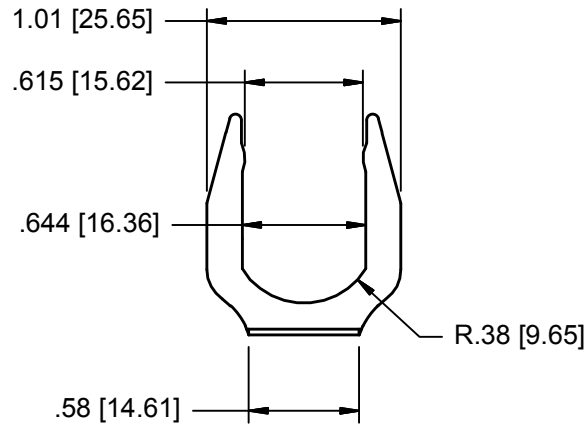


PROJ. NO:

DESTROY ALL PRINTS PREVIOUS TO

PART NO:
HS6397

REV.
NO.



THIS DRAWING IS THE EXCLUSIVE PROPERTY OF THE ILLINOIS LOCK COMPANY / CCL SECURITY PRODUCTS, AND IS SUBMITTED ONLY ON A CONFIDENTIAL BASIS. UNAUTHORIZED USE OR DISCLOSURE OF ITS CONTENTS AND REPRODUCTION IS PROHIBITED. THIS DRAWING, UNLESS OTHERWISE DIRECTED IS TO BE RETURNED TO THE ILLINOIS LOCK COMPANY / CCL SECURITY PRODUCTS.

Illinois Lock Company

CCL SECURITY PRODUCTS

WHEELING, IL.

MATERIAL:

TOLERANCES, UNLESS OTHERWISE SPECIFIED

| VALUE | INCHES [mm] |
|-------------------|-----------------|
| X | - |
| X.X | ± .015 [.381] |
| X.XX | ± .008 [.203] |
| X.XXX | ± .004 [.102] |
| FRACTIONS: ± 1/32 | ANGLES: ± 2° |

FINISH SPECS:

ENG: Mike

SCALE: 1 : 1

CHECKED BY:

DATE: 4/7/2006

CUST. NAME:

CUST. PART NO:

SHEET: 1 OF 1