

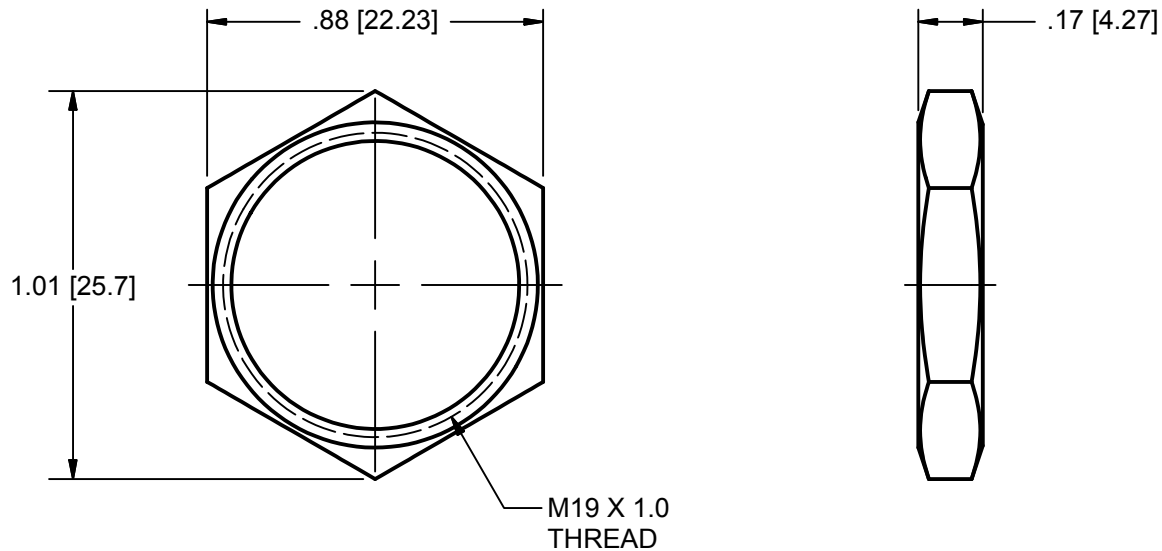
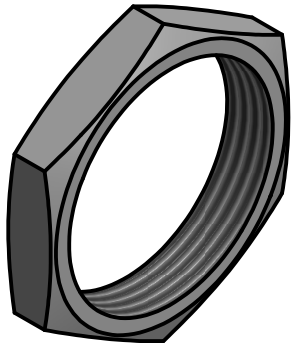
PROJ. NO:

DESTROY ALL PRINTS PREVIOUS TO

PART NO:

D9868

REV.
NO.



THIS DRAWING IS THE EXCLUSIVE PROPERTY OF THE ILLINOIS LOCK COMPANY / CCL SECURITY PRODUCTS, AND IS SUBMITTED ONLY ON A CONFIDENTIAL BASIS. UNAUTHORIZED USE OR DISCLOSURE OF ITS CONTENTS AND REPRODUCTION IS PROHIBITED. THIS DRAWING, UNLESS OTHERWISE DIRECTED IS TO BE RETURNED TO THE ILLINOIS LOCK COMPANY / CCL SECURITY PRODUCTS.

Illinois Lock Company



SECURITY PRODUCTS

WHEELING, IL.

MATERIAL: ZINC

TOLERANCES, UNLESS OTHERWISE SPECIFIED

FINISH SPECS: DICHROMATE

ENG: Tom

SCALE: 2 : 1

CHECKED BY:

DATE: 6/12/2006

VALUE INCHES [mm]

X. -

X.X ± .015 [.381]

X.XX ± .008 [.203]

X.XXX ± .004 [.102]

FRACTIONS: ± 1/32 ANGLES: ± 2°

M19 X 1.0 BARREL NUT

CUST. NAME:

CUST. PART NO:

SHEET: 1 OF 1