



Weather Resistant Oval Handle designed for Truck Caps

DC4060

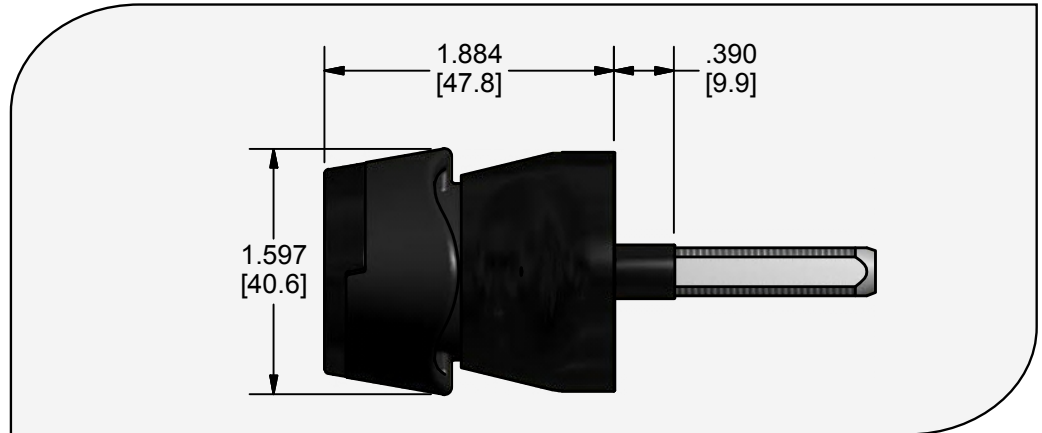
- Outdoor oval handle resists moisture, dust, salt and extreme temperatures
- Great option for 1 or 2 handle Truck Cap applications
- Available keyed-alike or keyed-different
- 200 key changes
- Automotive style reversible key with optional plastic over molding
- Plug removable
- Automotive style dust shutter
- Can be used with rotary / slam latches
- Spring back option available for tripping rotary latches

Material and Finish

- Housing: Zinc alloy with stainless steel scalp and upgraded dust shutter
- Finish: Textured black powder coat

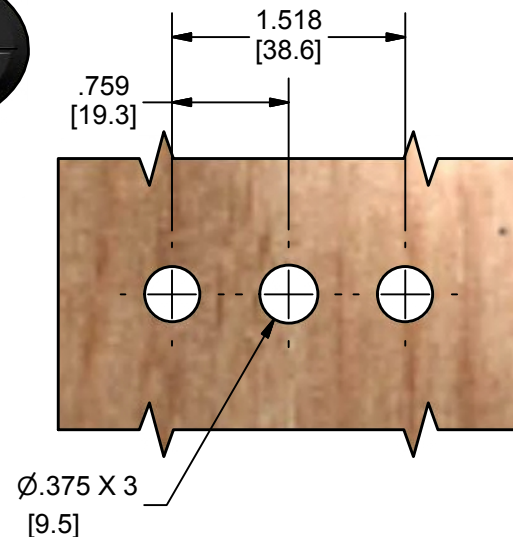
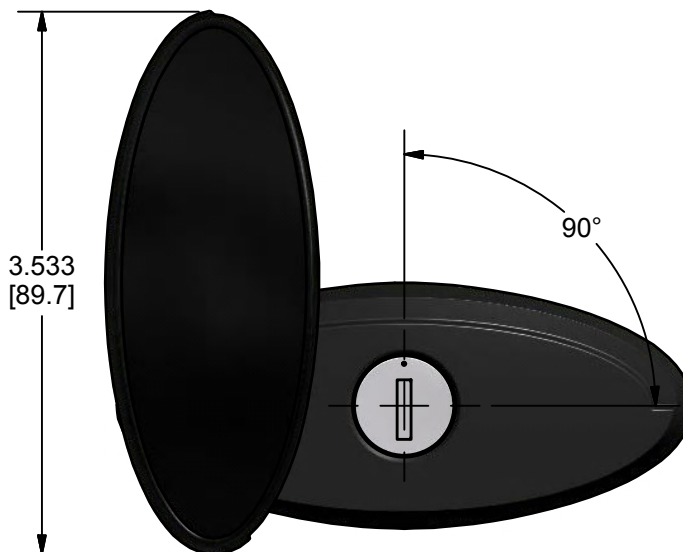


Rev 0
4/6/2016



Part Number	Housing Length	
	Inches	Millimeters
DC4060	25/64	9.9

Installation and Rotation



Illinois Lock Company
A division of the Eastern Company

www.illinoislock.com • sales@illinoislock.com • 847-537-1800

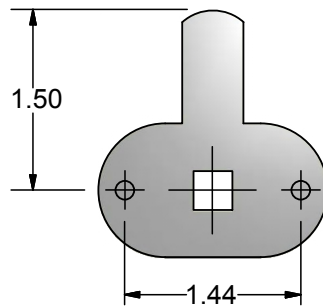


Weather Resistant Oval Handle designed for Truck Caps

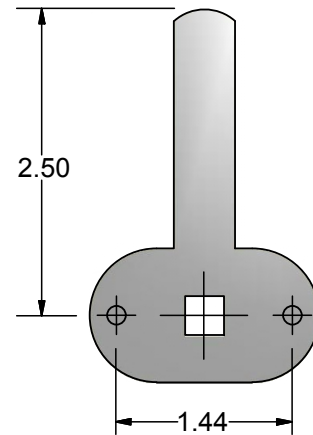
DC4060

Handle Cams

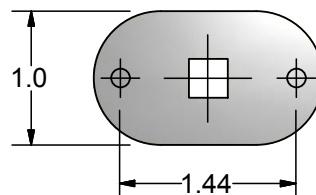
.314" - .319" Cam Boss



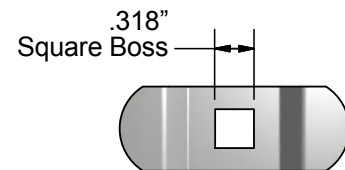
255F748
3-Point Cam (Short)



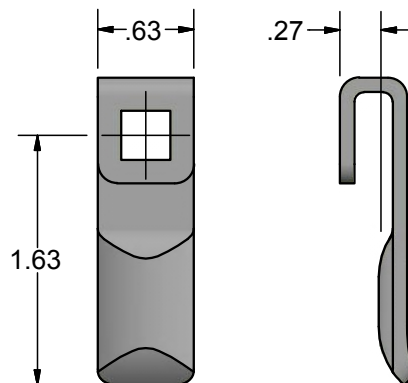
255F758
3-Point Cam (Long)



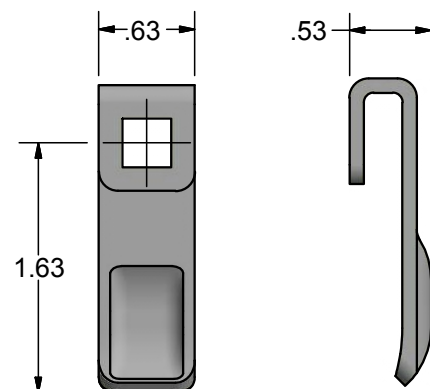
S214271
2-Point Cam



255F768
Holding Plate



354F638
Bumped-In Cam



354F628
Bumped-Out Cam



Weather Resistant Oval Handle designed for Truck Caps

DC4060

Accessories/Replacement Parts



Mounting Screw M4
PN: S9196



Washer
PN: S9195