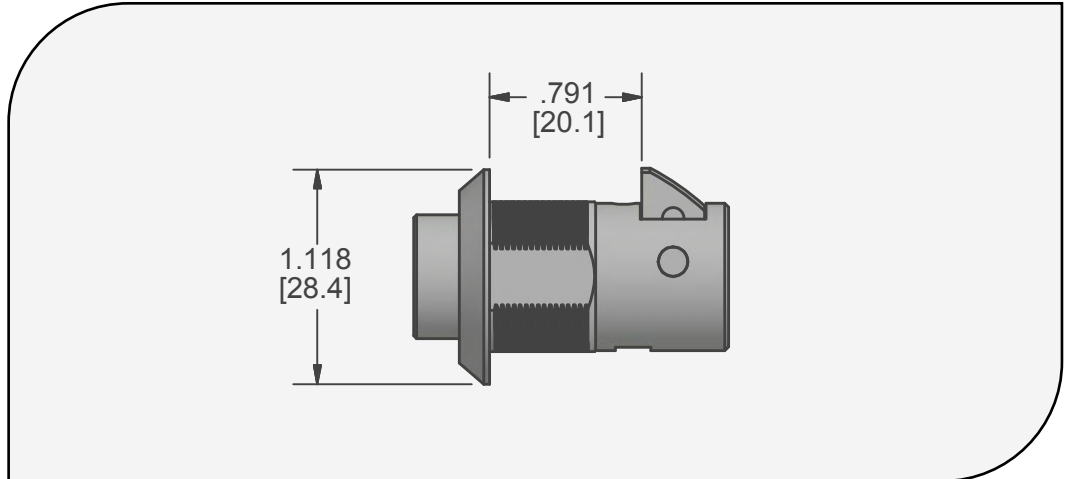




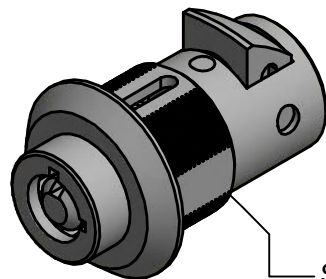
Tubular Slam Lock

DC1940A

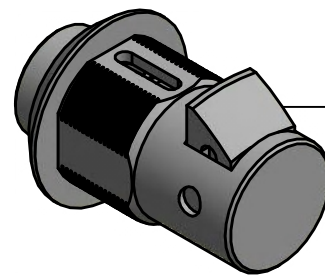
- Slam lock allows for latching when door or panel is shut
- Convenient push button to open
- Available keyed alike or keyed different
- 7 pin tumbler tubular mechanism
- 750,000 Key Changes



* length tolerance +/- .039" [1mm]



Slam Lock Assembly



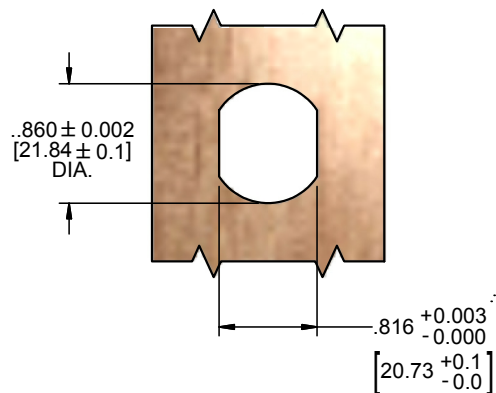
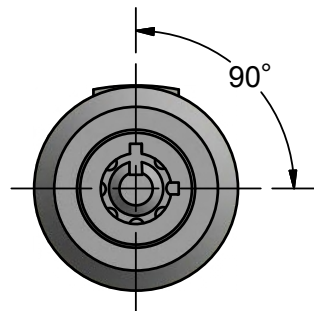
Spring-Loaded Latch

Material and Finish

Housing: Zinc Alloy
Finish: Bright Chrome US26 [standard]

Satin Nickel US15,
Black E-coat optional

Key Rotation and Installation



Illinois Lock Company

A division of the Eastern Company

www.illinoislock.com • sales@illinoislock.com • 847-537-1800



Tubular Slam Lock

D1940 Series

Accessories/Replacement Parts



Barrel Nut M22
PN: S9199