



Thin Bezel Wing Handles

With Built-In Cover

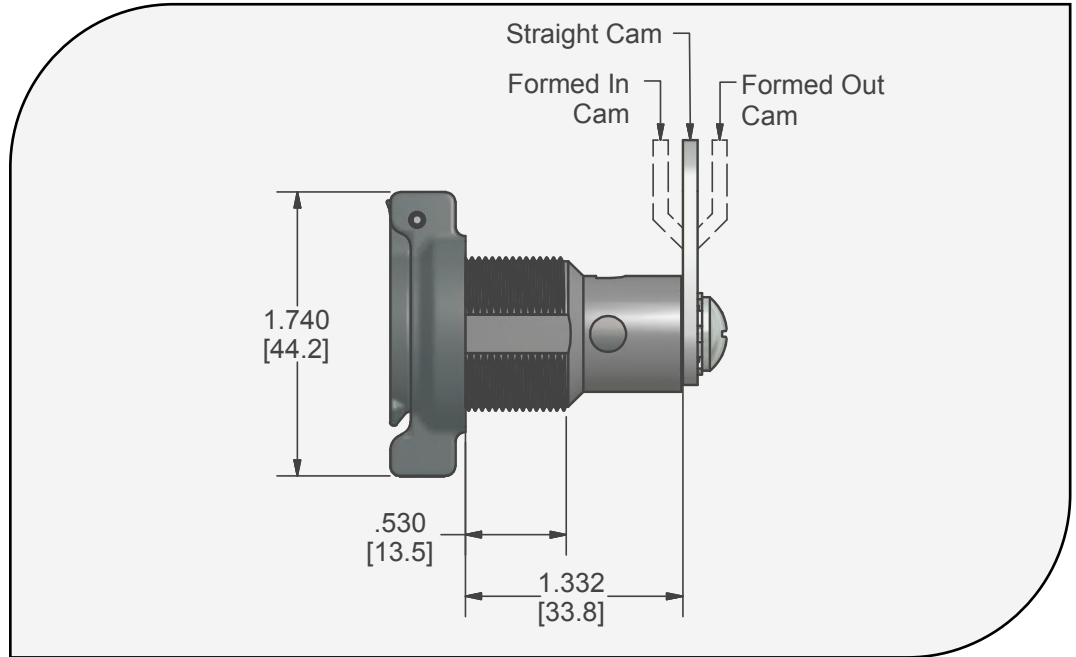
DC692, 697 Series

- Outdoor wing locks resist moisture, dust, salt and extreme temperatures
- Various Cams, rotations and key pulls
- Available keyed-alike or keyed-different in multiple lengths
- 200 key changes
- Automotive style dust shutter
- Automotive style reversible key with optional plastic over molding
- DC692 can be used with rotary / slam latches

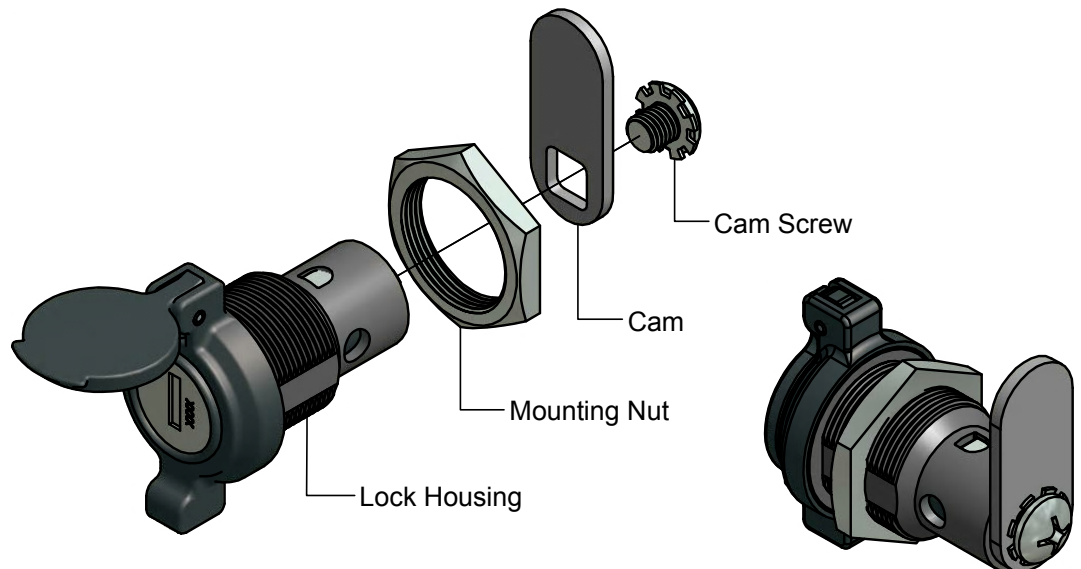
Material and Finish

Housing: Zinc Alloy with stainless steel scalp and upgraded dust shutter

Finish: Textured black powder coat



Part No.	Housing Length [B-Dim]		Spring Returning
	Inches	Millimeters	
DC692	1.332	33.8	Yes
DC697	1.332	33.8	No



Illinois Lock Company
A division of the Eastern Company

www.illinoislock.com • sales@illinoislock.com • 847-537-1800

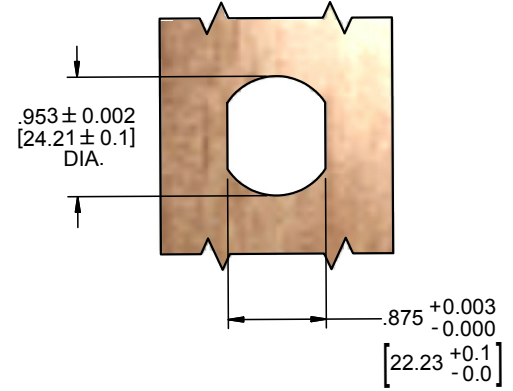
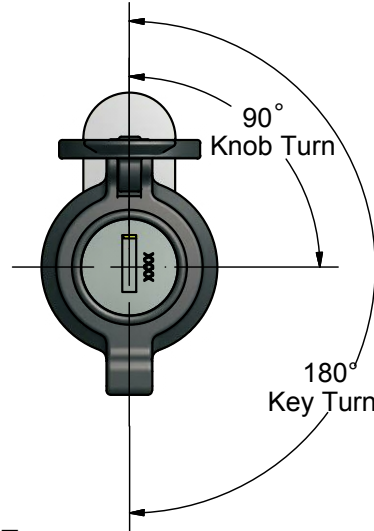


Thin Bezel Wing Handles

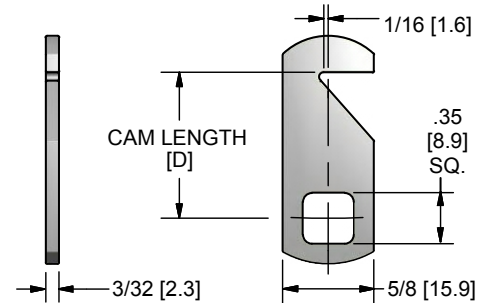
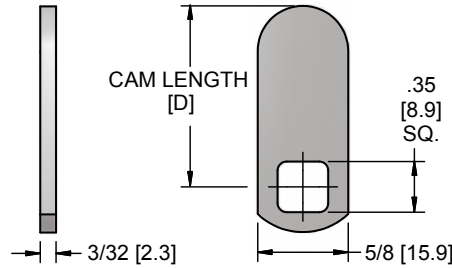
With Built-In Cover

DC692, 697 Series

Cam Rotation and Installation



Cam Types



Straight Cams		
Part Number	Cam Length [D-Dim]*	
	Inches	Millimeters
TS2201-05	5/8	15.9
TS2201-07	11/16	17.5
TS2201-09	3/4	19.1
TS2201-13	7/8	22.2
TS2201-17	1	25.4
TS2201-19	1-1/8	28.6
TS2201-21	1-1/4	31.7
TS2201-23	1-3/8	34.9
TS2201-25	1-1/2	38.1
TS2201-27	1-5/8	41.3
TS2201-29	1-3/4	44.4
TS2201-31	1-7/8	47.6
TS2201-33	2	50.8

Hook Cams		
Part Number	Cam Length [D-Dim]*	
	Inches	Millimeters
TS2204-05	5/8	15.9
TS2204-07	11/16	17.5
TS2204-09	3/4	19.1
TS2204-13	7/8	22.2
TS2204-17	1	25.4
TS2204-19	1-1/8	28.6
TS2204-21	1-1/4	31.7
TS2204-23	1-3/8	34.9
TS2204-25	1-1/2	38.1
TS2204-27	1-5/8	41.3
TS2204-29	1-3/4	44.4
TS2204-31	1-7/8	47.6
TS2204-33	2	50.8

* length tolerance +/- .039" [1mm]

Illinois Lock Company
A division of the Eastern Company

www.illinoislock.com • sales@illinoislock.com • 847-537-1800

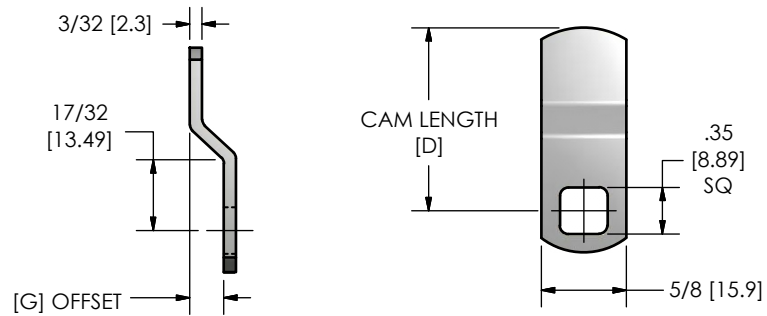


Thin Bezel Wing Handles

With Built-In Cover

DC692, 697 Series

Cam Types - Continued



Offset Cams				
Part Number	Cam Length [D-Dim]		Offset Length [G-Dim]	
	Inches	Millimeters	Inches	Millimeters
TF2201-13-02	7/8	22.2	1/16	1.6
TF2201-13-04	7/8	22.2	1/8	3.2
TF2201-13-06	7/8	22.2	3/16	4.8
TF2201-15-08	15/16	23.8	1/4	6.4
TF2201-17-02	1	25.4	1/16	1.6
TF2201-17-04	1	25.4	1/8	3.2
TF2201-17-06	1	25.4	3/16	4.8
TF2201-19-08	1-1/8	28.6	1/4	6.4
TF2201-21-02	1-1/4	31.7	1/16	1.6
TF2201-21-04	1-1/4	31.7	1/8	3.2
TF2201-21-06	1-1/4	31.7	3/16	4.8
TF2201-21-08	1-1/4	31.7	1/4	6.4
TF2201-25-02	1-1/2	38.1	1/16	1.6
TF2201-25-04	1-1/2	38.1	1/8	3.2
TF2201-25-06	1-1/2	38.1	3/16	4.8
TF2201-25-08	1-1/2	38.1	1/4	6.4
TF2201-29-02	1-3/4	44.4	1/16	1.6
TF2201-29-04	1-3/4	44.4	1/8	3.2
TF2201-29-06	1-3/4	44.4	3/16	4.8
TF2201-29-08	1-3/4	44.4	1/4	6.4
TF2201-33-02	2	50.8	1/16	1.6
TF2201-33-04	2	50.8	1/8	3.2
TF2201-33-06	2	50.8	3/16	4.8
TF2201-33-08	2	50.8	1/4	6.4

* length tolerance +/- .039" [1mm]

Illinois Lock Company
A division of the Eastern Company

www.illinoislock.com • sales@illinoislock.com • 847-537-1800



Thin Bezel Wing Handles

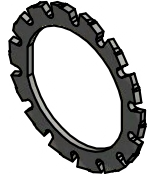
With Built-In Cover

DC692, 697 Series

Accessories/Replacement Parts



Cam Screw 1/4-28
PN: S23032G



Spur Washer
PN: S8952



Barrel Nut 15/16-24
PN: D9166



Rubber Gasket
PN: P9267