

PROJ. NO.

DESTROY ALL PRINTS PREVIOUS TO

DRAWING NO.

TH-20

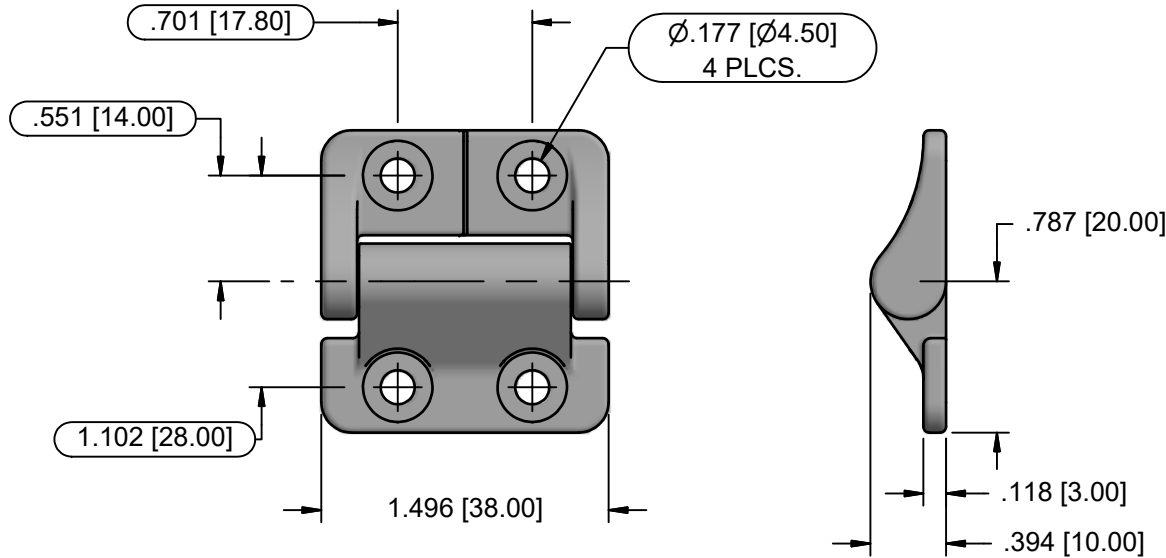
1/27/2019

REV. NO.

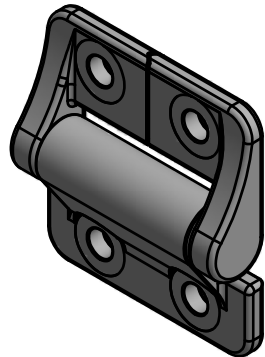
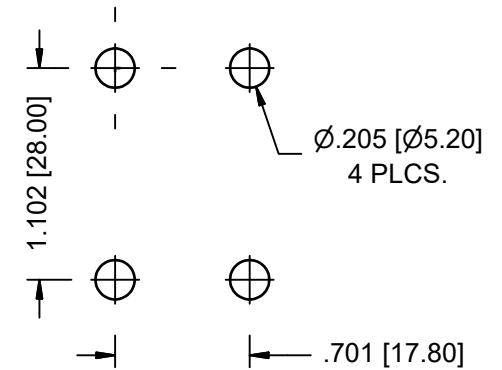
A

DIST. A

SHT. 1 OF 1



MOUNTING CONFIGURATION



NOTES:

1. *FINISH SPEC # TO BE ADDED FOR COMPLETE PART NUMBER:
1 = NATURAL
5 = BLACK
2. CYCLE LIFE: +/- 20% OF TORQUE VALUE SHOWN WITHIN 25,000 CYCLES.
3. 270 DEGREE SHAFT ROTATION.
4. OIL RING SEALS FOR PROTECTION AGAINST ENVIRONMENTAL CONTAMINATION.

SYMMETRIC TORQUE HINGE RATINGS nM

PART NUMBER	VALUE
TH-20-S-000*	0.0
TH-20-S-009*	0.9
TH-20-S-014*	1.4
TH-20-S-018*	1.8
TH-20-S-023*	2.3

THIS DRAWING IS THE EXCLUSIVE PROPERTY OF THE ILLINOIS LOCK COMPANY AND IS SUBMITTED ONLY ON A CONFIDENTIAL BASIS. UNAUTHORIZED USE OR DISCLOSURE OF ITS CONTENTS AND REPRODUCTION IS PROHIBITED. THIS DRAWING, UNLESS OTHERWISE DIRECTED IS TO BE RETURNED TO THE ILLINOIS LOCK COMPANY.

MATERIAL ZINC ALLOY, STEEL GREASE, AND O-RING

Illinois Lock Company WHEELING, ILL.

FINISH SPECS: SEE NOTE 1

TORQUE HINGE

DECIMALS ±.010[.25]

FRACTIONS ±.015[.38]

SCALE 1 : 1

CUST. NAME:

DRAWN BY T.H.

CHECKED BY

DATE 1/27/2019

CUST. PART NO.