

SPRING LOADED PLUNGER

(.39 [10.0 mm])

(.14 [3.4 mm])

(.22 [5.5 mm])

LATCHED POSITION

Technical drawing of the Eberhard motor assembly. The drawing shows a side view of the motor with various dimensions and labels. Key components and dimensions include:

- SINGLE STAGE LATCH**: Located at the top left.
- Ø 3.8 [Ø9.5 mm]**: Dimension for the latch pin.
- STRIKER PIN (ORDERED SEPARATELY)**: Located at the top center.
- 46°**: Angle of the latch mechanism.
- Ø 3.7 [Ø 9.4 mm]**: Dimension for the latch pin.
- 59 [15.0 mm]**: Dimension for the latch pin.
- 10 [2.5 mm]**: Dimension for the latch pin.
- 67 ± [42.5 ± mm]**: Dimension for the latch pin.
- 30 [7.5 mm]**: Dimension for the latch pin.
- 49 [12.5 mm]**: Dimension for the latch pin.
- 16 [4.0 mm]**: Dimension for the latch pin.
- 71 ± [18.0 ± mm]**: Dimension for the latch pin.
- 2.56 [65.0 mm]**: Dimension for the latch pin.
- EBERHARD motor**: Text on the motor body.
- www.eberhard.com**: Website address.
- 3-Phase synchronous motor**: Text on the motor body.

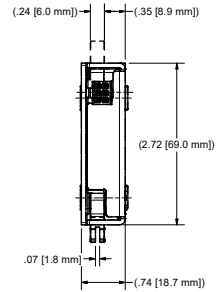


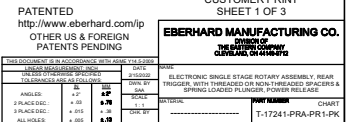
Diagram illustrating the internal switch mechanism of the MICRO-FIT 30 connector (43020-0001 OR BLACK) with the 43031-0007 (LS NEEDED) component. The diagram shows the internal switch, latch position indicator, and trigger latched/released positions. Dimensions are provided in both inches and millimeters.

Labels and Dimensions:

- MICRO-FIT 30
- 43020-0001 (OR BLACK)
- 43031-0007 (LS NEEDED)
- (WIRE: 24 AWG)
- INTERNAL SWITCH, LATCH POSITION INDICATOR
- .56 [14.3 mm]
- .29 [7.4 mm]
- .22 [5.6 mm] WITH OVER TRAVEL
- .384 ± .009 [9.75 ± 0.23 mm]
- (R.192 [R4.87 mm])
- SEE MOUNTING OPTIONS CHART (2 PLACES)
- TRIGGER LATCHED POSITION
- .11 [2.8 mm]
- TRIGGER RELEASED POSITION

A diagram showing the back of the module with a 5-pin connector. The pins are labeled: PIN 1, PIN 2, PIN 3, PIN 4, and PIN 5. A cable is connected to the connector.

PART NUMBERS/OPTIONS						
PART NUMBER	RELEASE TYPE	MANUAL TRIGGER	MOUNTING STYLE	STRIKER PLUNGER	FEEDBACK RELAY	CONNECTOR
T-17241-PRA-PR1-PK-BG	POWER RELEASE	REAR TRIGGER	1/4-20 MTG. HEADS		YES	YES
T-17241-PRB-PR1-PK-BG	POWER RELEASE	REAR TRIGGER	MØX1 MTG. HEADS	YES	YES	YES
17241-PRC-PR1-PK-BG	POWER RELEASE	REAR TRIGGER	Ø 26 THRU HOLE	YES	YES	YES



THIS DOCUMENT IS IN ACCORDANCE WITH ASME Y14.5-2009			
LINEAR MEASUREMENT: INCH			DATE
UNLESS OTHERWISE SPECIFIED			2/15/2022
TOLERANCES ARE AS FOLLOWS:			
ANGLES:	$\pm .2^\circ$	$\pm .2^\circ$	DRW. BY
			SAA
2 PLACE DEC :	$\pm .03$	$\pm .03$	SCALE
			1 : 1
3 PLACE DEC :	$\pm .015$	$\pm .015$	CHK. BY
ALL UNLESS OTHERWISE SPECIFIED	$\pm .005$	$\pm .005$	

EBERHARD MANUFACTURING CO.
DIVISION OF
THE EASTERN COMPANY
CLEVELAND, OH 44119-8772

CLEVELAND, OH 44106/12	
PARTS:	
ELECTRONIC SINGLE STAGE ROTARY ASSEMBLY, REAR TRIGGER, WITH THREADED OR NON-THREADED SPACERS & SPRING LOADED PLUNGER, POWER RELEASE	
REMARKS:	PART NUMBER CHART T-17241-PRA-PR1-PK