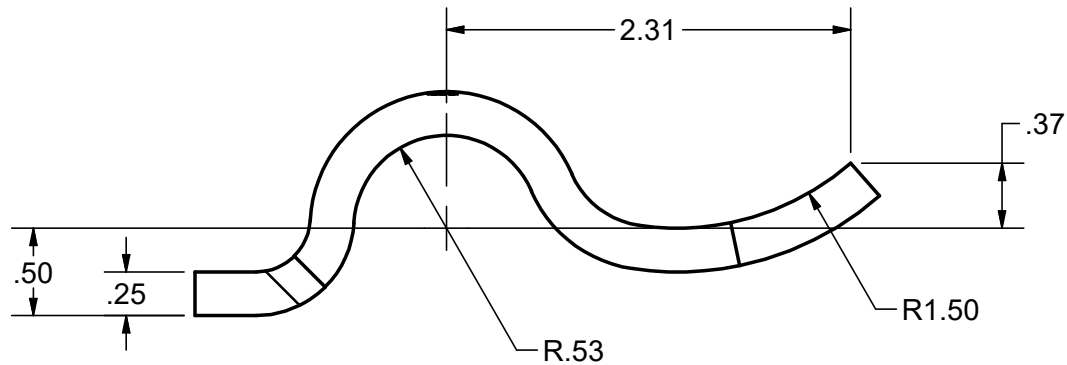
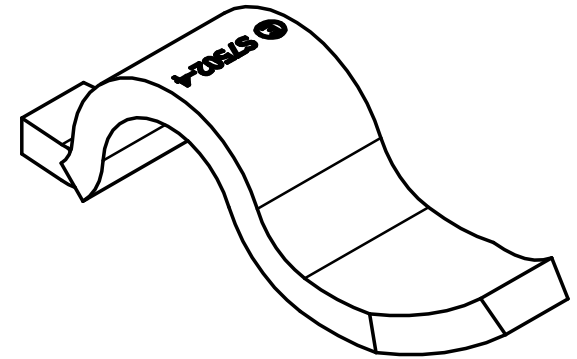
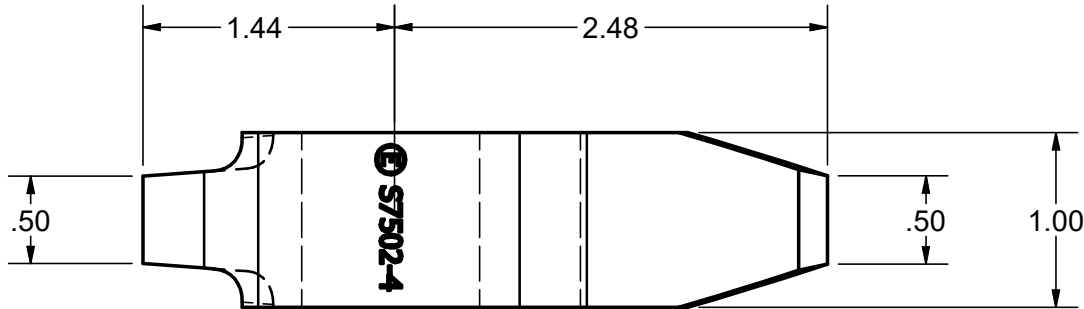


**CONFIDENTIAL NOTICE:** This drawing and the designs, specifications and engineering information disclosed hereon are the property of Eberhard Manufacturing Company and are not to be disseminated or reproduced without express written consent. The drawing is loaned in confidence and then only for consideration of the matter disclosed hereon. In accepting loan of this drawing, recipient agrees to keep it and the matter disclosed hereon in confidence and not to use nor permit their use in any way detrimental to Eberhard Manufacturing Company, Division of the Eastern Company, 21944 Drake Road, Cleveland, Ohio 44149-9712 © 2014 EBERHARD MFG. CO.



SUPERSEDES DRAWING S7502-4 SHEET 1 OF 2 DATED 1-12-99.

CUSTOMER PRINT  
SHEET 1 OF 2

						<div>LINEAR MEASURE: INCH</div> <div>UNLESS OTHERWISE SPECIFIED TOLERANCES ARE AS FOLLOWS:</div> <div><div>INMM</div><div>ANGLES: 2 PLACE DEC.: 3 PLACE DEC.: ALL HOLES:</div><div>± 2' ± 2' ± .03 ± .76 ± .015 ± .38 ± .005 ± .13</div></div>		<div>DATE 9/12/2014</div> <div>DR.BY FLP</div> <div>SCALE FULL</div> <div>CHK.BY</div>		<div>EBERHARD MANUFACTURING CO.</div> <div>DIVISION OF</div> <div>THE EASTERN COMPANY</div> <div>CLEVELAND, OHIO 44149-9712</div> <div>THIS DOCUMENT IS IN ACCORDANCE WITH ASME Y14.15-2009</div>		<div>NAME</div> <div>STAMPED CAM</div> <div>MATERIAL H.S.L.A. STEEL 80000 MIN YIELD</div> <div>PART NUMBER S7502-4</div>	
	CONVERTED TO 3D	5671	9-12-14	FLP	MR								
REV	DESCRIPTION	EN	DATE	REVD BY	APVD BY								

REV	DESCRIPTION	EN	DATE	REVD BY	APVD BY
	CONVERTED TO 3D	5671	9-12-14	FLP	MR

C:\Working\_Folder\Archive\Pro\717502\_3\S7502-4 SH1.idw