



Keyless Wing Handles

DTL170 Series

- Non-locking 1/4 turn solution
- Easy operation using thumb and finger
- Various cams, rotations and finishes
- Suitable for outdoor use
- Ball and spring detent standard
- Internal O-ring available

Material and Finish

Housing: Zinc Alloy

Finish: Bright Chrome US26 (Standard)

Satin Nickel US15,

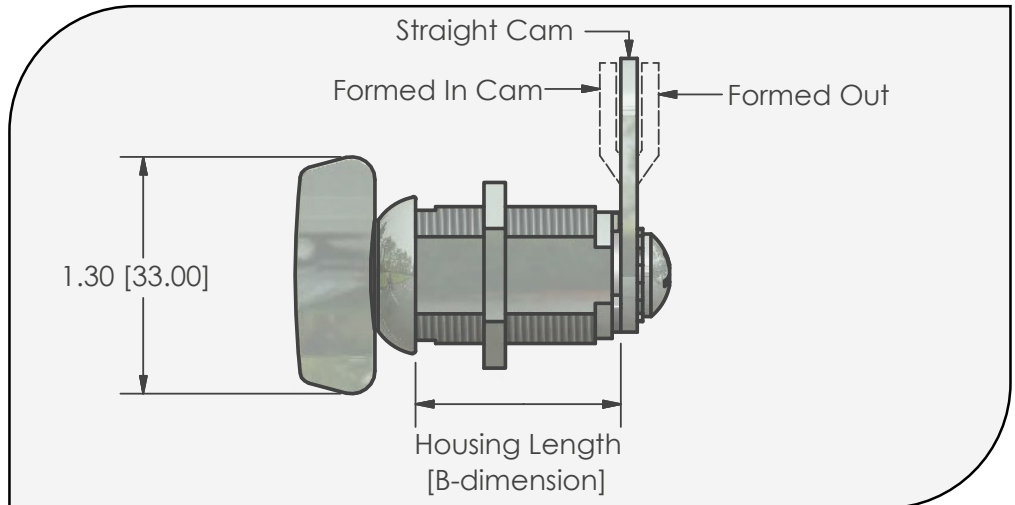
Black E-Coat (Optional)

Outdoor rated chrome plated over double nickel

SEE STOCK OPTIONS ON PAGE 5

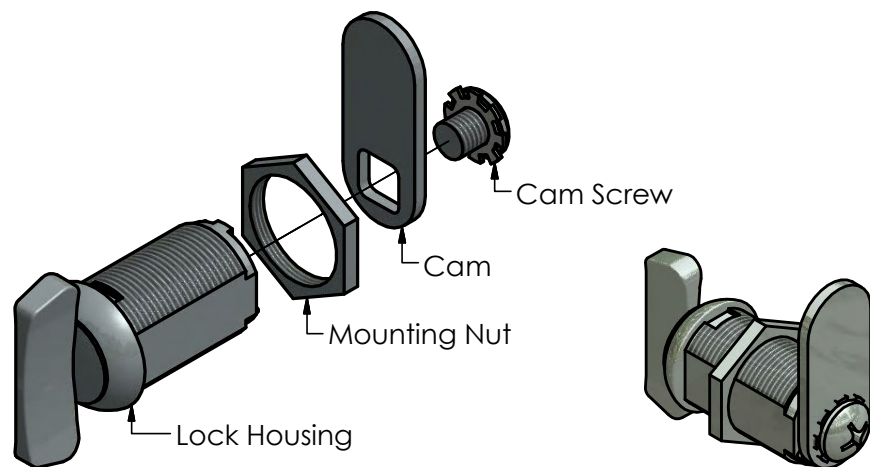


Rev 0
12/8/2015



| Lock Number | HOUSING LENGTH [B-Dim]* | |
|-------------|-------------------------|-------------|
| | Inches | Millimeters |
| DTL170S | 5/8 | 15.9 |
| DTL170M | 7/8 | 22.2 |
| DTL170L | 1-1/8 | 28.6 |
| DTL170XXL | 1-5/8 | 41.3 |
| DTL170XXXXL | 2-1/8 | 53.9 |

* length tolerance +/- .039" [1mm]



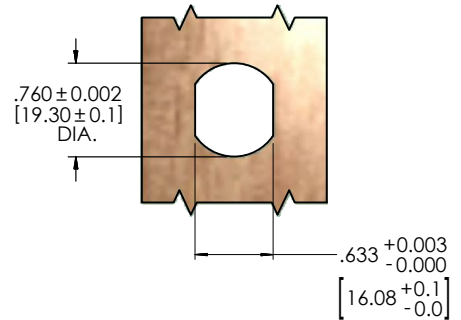
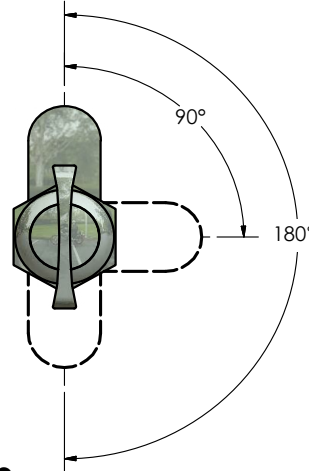
SCREW TYPE



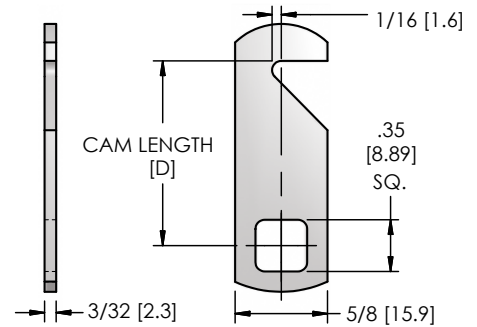
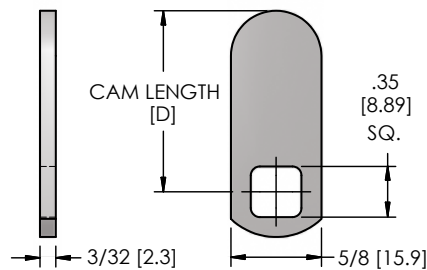
Keyless Wing Handles

DTL170 Series

Cam Rotation and Installation



Cam Types



| Straight Cams | | |
|---------------|--------------------|-------------|
| Part Number | Cam Length [D-Dim] | |
| | Inches | Millimeters |
| TS2201-13 | 7/8 | 22.2 |
| TS2201-17 | 1 | 25.4 |
| TS2201-19 | 1-1/8 | 28.6 |
| TS2201-21 | 1-1/4 | 31.7 |
| TS2201-23 | 1-3/8 | 34.9 |
| TS2201-25 | 1-1/2 | 38.1 |
| TS2201-27 | 1-5/8 | 41.3 |
| TS2201-29 | 1-3/4 | 44.4 |
| TS2201-31 | 1-7/8 | 47.6 |
| TS2201-33 | 2 | 50.8 |

| Straight Cams | | |
|---------------|--------------------|-------------|
| Part Number | Cam Length [D-Dim] | |
| | Inches | Millimeters |
| TS2204-13 | 7/8 | 22.2 |
| TS2204-17 | 1 | 25.4 |
| TS2204-19 | 1-1/8 | 28.6 |
| TS2204-21 | 1-1/4 | 31.7 |
| TS2204-23 | 1-3/8 | 34.9 |
| TS2204-25 | 1-1/2 | 38.1 |
| TS2204-27 | 1-5/8 | 41.3 |
| TS2204-29 | 1-3/4 | 44.4 |
| TS2204-31 | 1-7/8 | 47.6 |
| TS2204-33 | 2 | 50.8 |

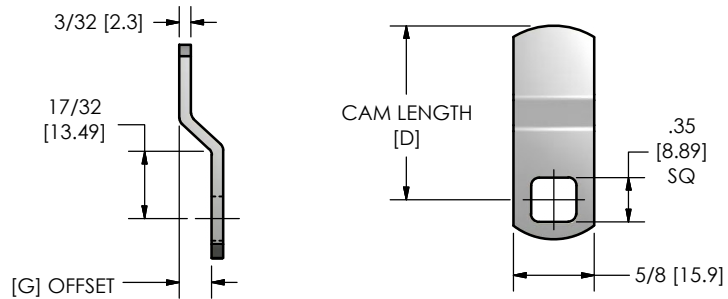
* length tolerance +/- .039" [1mm]



Keyless Wing Handles

DTL170 Series

Cam Types - contd



| Offset Cams | | | | |
|--------------|--------------------|-------------|-----------------------|-------------|
| Part Number | Cam Length [D-Dim] | | Offset Length [G-Dim] | |
| | Inches | Millimeters | Inches | Millimeters |
| TF2201-13-02 | 7/8 | 22.2 | 1/16 | 1.6 |
| TF2201-13-04 | 7/8 | 22.2 | 1/8 | 3.2 |
| TF2201-13-06 | 7/8 | 22.2 | 3/16 | 4.8 |
| TF2201-15-08 | 15/16 | 23.8 | 1/4 | 6.4 |
| TF2201-17-02 | 1 | 25.4 | 1/16 | 1.6 |
| TF2201-17-04 | 1 | 25.4 | 1/8 | 3.2 |
| TF2201-17-06 | 1 | 25.4 | 3/16 | 4.8 |
| TF2201-19-08 | 1-1/8 | 28.6 | 1/4 | 6.4 |
| TF2201-21-02 | 1-1/4 | 31.7 | 1/16 | 1.6 |
| TF2201-21-04 | 1-1/4 | 31.7 | 1/8 | 3.2 |
| TF2201-21-06 | 1-1/4 | 31.7 | 3/16 | 4.8 |
| TF2201-21-08 | 1-1/4 | 31.7 | 1/4 | 6.4 |
| TF2201-25-02 | 1-1/2 | 38.1 | 1/16 | 1.6 |
| TF2201-25-04 | 1-1/2 | 38.1 | 1/8 | 3.2 |
| TF2201-25-06 | 1-1/2 | 38.1 | 3/16 | 4.8 |
| TF2201-25-08 | 1-1/2 | 38.1 | 1/4 | 6.4 |
| TF2201-29-02 | 1-3/4 | 44.4 | 1/16 | 1.6 |
| TF2201-29-04 | 1-3/4 | 44.4 | 1/8 | 3.2 |
| TF2201-29-06 | 1-3/4 | 44.4 | 3/16 | 4.8 |
| TF2201-29-08 | 1-3/4 | 44.4 | 1/4 | 6.4 |
| TF2201-33-02 | 2 | 50.8 | 1/16 | 1.6 |
| TF2201-33-04 | 2 | 50.8 | 1/8 | 3.2 |
| TF2201-33-06 | 2 | 50.8 | 3/16 | 4.8 |
| TF2201-33-08 | 2 | 50.8 | 1/4 | 6.4 |

* length tolerance +/- .039" [1mm]



Keyless Wing Handles

DTL170 Series

All In-Stock Cam Locks Supplied with following Hardware:

- 180° Stop Plate
- 90° Stop Plate
- Cam Screw
- Mounting Nut
- 1-1/8" x 1/4" Offset Cam
- 1-1/4" straight cam
- Trim Washer
- Spur Washer
- Spline Fillers

In-Stock Cam Locks

| In-Stock Locks | | | |
|----------------|------------|-------------|--------------------------|
| Part Number | Cam Length | | Keying |
| | Inches | Millimeters | |
| 65101 | 7/16 | 11.11 | Keyed-Alike(C415A) |
| 65001 | 5/8 | 15.9 | Keyed-Alike(C415A) |
| 65002 | 7/8 | 22.2 | Keyed-Alike(C415A) |
| 65003 | 1-1/8 | 28.6 | Keyed-Alike(C415A) |
| 65102 | 7/16 | 11.1 | Keyed-Alike(8025) |
| 65004 | 42132 | 15.9 | Keyed-Alike(8025) |
| 65005 | 7/8 | 22.2 | Keyed-Alike(8025) |
| 65006 | 1-1/8 | 28.6 | Keyed-Alike(8025) |
| 65103 | 7/16 | 11.11 | Keyed-Different(700-724) |
| 65007 | 5/8 | 15.9 | Keyed-Different(700-724) |
| 65008 | 7/8 | 22.2 | Keyed-Different(700-724) |
| 65009 | 39448 | 28.6 | Keyed-Different(700-724) |
| 65010 | 5/8 | 15.9 | Keyed-Alike(CH751) |
| 65011 | 7/8 | 22.2 | Keyed-Alike(CH751) |
| 65012 | 1-1/8 | 28.6 | Keyed-Alike(CH751) |
| 65013 | 5/8 | 15.9 | Keyed-Alike(LS300) |
| 65014 | 7/8 | 22.2 | Keyed-Alike(LS300) |
| 65015 | 1-1/8 | 28.6 | Keyed-Alike(LS300) |
| 65104 | 7/16 | 11.11 | Keyed-Alike(CH751) |
| 65105 | 7/16 | 11.11 | Keyed-Alike(LS300) |

* length tolerance +/- .039" [1mm]



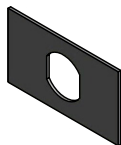
Keyless Wing Handles

DTL170 Series

Accessories/Replacement Parts



Cam Scr 1/4-28
PN: S23032G



Anchor Plate
PN: S2315A



Nut Lock
PN: S9003A



Barrel Nut M19
PN: D9868



Spur Washer
PN: S2302A



Spur Washer
PN: S2302B



Anchor Washer
PN: S6951



Flat Washer
PN: S2313



Speed-Clip
PN: HS6397



Metal Finger Pull
PN: FP333