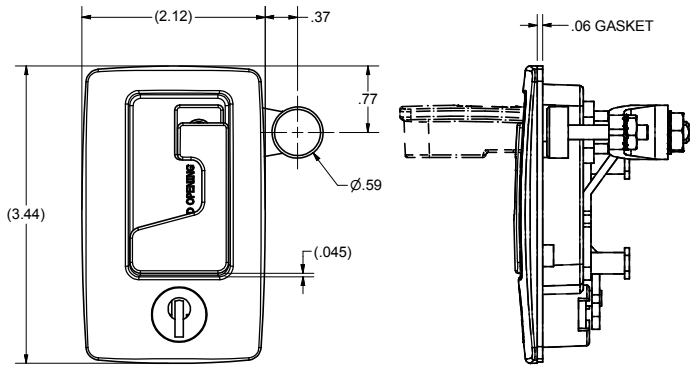
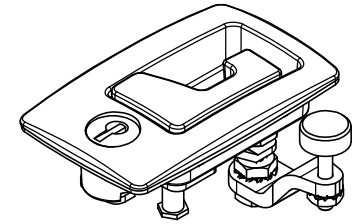
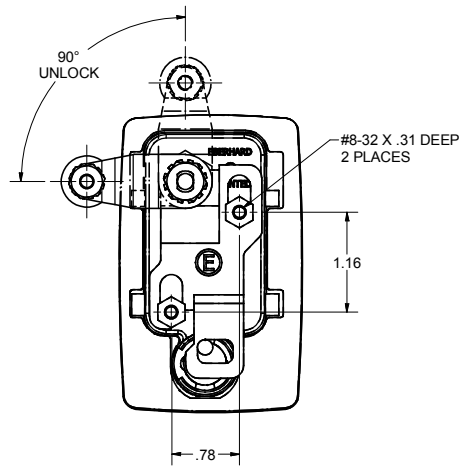


CONFIDENTIAL NOTICE: This drawing and the designs, specifications and engineering information disclosed hereon are the property of Eberhard Manufacturing Company and are not to be disseminated or reproduced without express written consent. The drawing is loaned in confidence and then only for consideration of the matter disclosed hereon. In accepting loan of this drawing, recipient agrees to keep it and the matter disclosed hereon in confidence and not to use nor permit their use in any way detrimental to Eberhard Manufacturing Company, Division of the Eastern Company, 21844 Drake Road, Cleveland, Ohio 44146-9712. © 2016 EBERHARD MFG. CO.

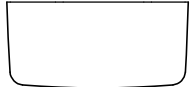
REVISION HISTORY					
REV	DESCRIPTION	EN	DATE	REV. BY	APVD. BY
1	CONVERTED TO 3D	5739	2-12-16	FLP	MR



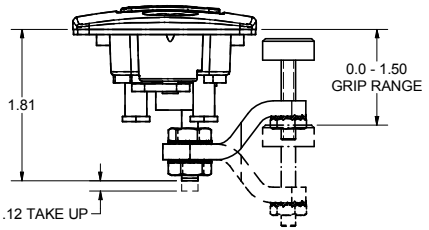
ECL-530-K



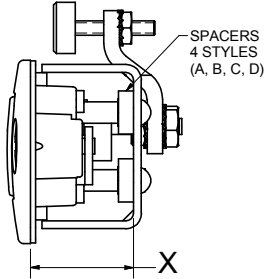
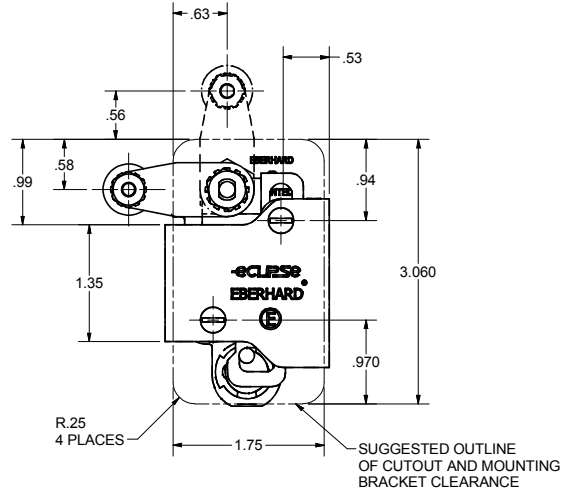
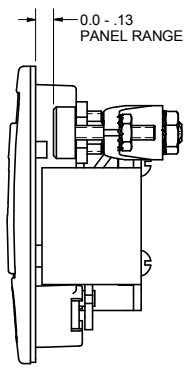
1EC-530-K WITH STAINLESS STEEL SCALLOP



NON LOCKING



ECL-530-KP8



ECL-530-KP8				
SPACER	A	B	C	D
X DIM	1.12	1.16	1.19	1.22

PART NUMBER	DESCRIPTION
ECL-530	ASSEMBLY WITH GASKET (NON-KEY LOCKING)
ECL-530-P8	ASSEMBLY WITH GASKET, MOUNTING BRACKET, SPACERS AND SCREWS
ECL-530-K	ASSEMBLY WITH GASKET (KEY LOCKING)
ECL-530-KP8	ASSEMBLY WITH GASKET, MOUNTING BRACKET, SPACERS AND SCREWS
1EC-530-KP8	ASSEMBLY WITH GASKET, MOUNTING BRACKET, SPACERS AND SCREWS WITH STAINLESS STEEL SCALLOPS

NOTE: AVAILABLE FINISHES:
MATT BLACK, FC (MB)
MATT WHITE, FC (MW)

SUPERSEDES DRAWING ECL-530 / 1EC-530 CHART SHEET 1 OF 2 DATED 11-9-93.

ECLIPSE® AND RECEPTACLE ARE REGISTERED TRADEMARKS OF EBERHARD MANUFACTURING CO., DIVISION OF THE EASTERN CO.

eclipse SERIES

PATENTED CUSTOMER PRINT SHEET 1 OF 2

EBERHARD MANUFACTURING CO.
DIVISION OF THE EASTERN COMPANY
CLEVELAND, OHIO 44146-9712

THIS DOCUMENT IS IN ACCORDANCE WITH ASME Y14.5-2009		NAME	
LINEAR MEASURE: INCH	DATE: 2/12/2016	LIFT AND TURN LATCH ASSEMBLY, NON AND KEY LOCKING WITH GASKET	
UNLESS OTHERWISE SPECIFIED TOLERANCES ARE AS FOLLOWS:	DR BY: FLP	MATERIAL:	
TOLERANCES ARE AS FOLLOWS:	SCALE: FULL	PART NUMBER: ECL-530 / 1EC-530	
IN .001	DATE: 2/12/2016	CHART:	
IN .005	SCALE: FULL	ECL-530 / 1EC-530	
IN .015	DATE: 2/12/2016		
IN .030	SCALE: FULL		
IN .050	DATE: 2/12/2016		
IN .100	SCALE: FULL		
ALL HOLES:	DATE: 2/12/2016		

C:\TEMP\ccdb48b5-4aa2-4e3c-b99a-608734128760\ECL-530 SH1.idw