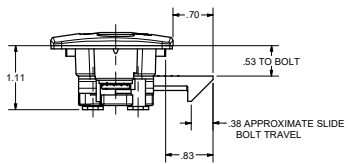
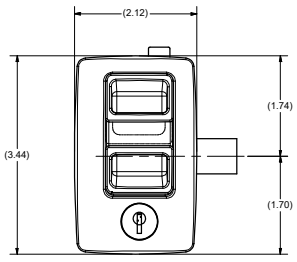
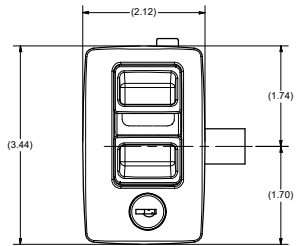
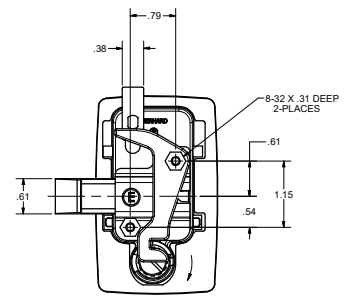
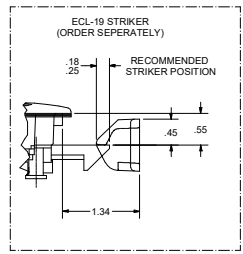
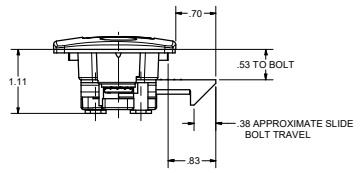
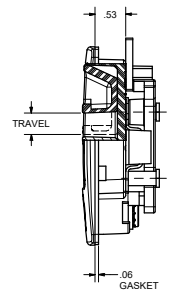


CONFIDENTIAL NOTICE: This drawing and the design, identification and engineering information disclosed herein are the property of Eberhard Manufacturing Company and are not to be disseminated or reproduced without express written consent. The drawing is intended to be used for the manufacture of the parts described herein. In accordance with the drawing, the manufacturer shall be held responsible for the design, identification and engineering information disclosed herein. Eberhard Manufacturing Company reserves the right to change the design, identification and engineering information disclosed herein without notice and without liability to any party.

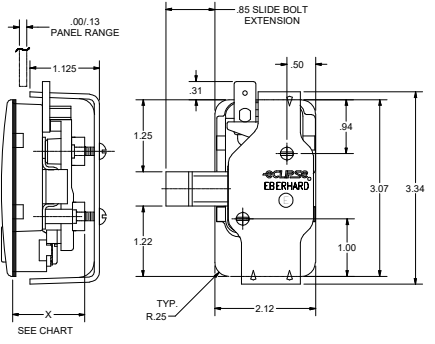
REVISION HISTORY		EN	DATE	REV BY	APVD BY
REV	DESCRIPTION	5698	4-10-15	FLP	MR
1	CONVERTED TO 3D				



ECL-230-SK



ECL-230-KP8

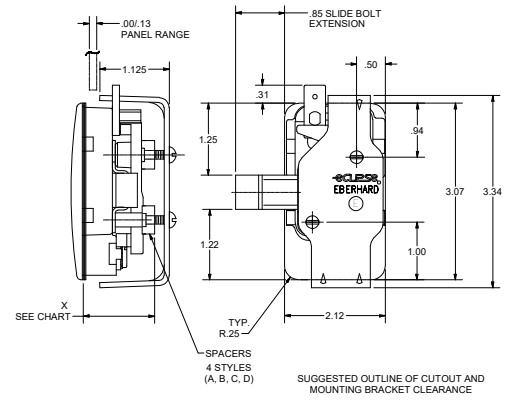
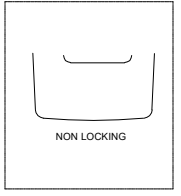


ECL-230-SKP8

SPACER X DIM.	A	B	C	D
	1.17	1.21	1.24	1.27

SQUEEZE LATCH ASSEMBLY	
PART NUMBER	DESCRIPTION
ECL-230	ASSEMBLY WITH GASKET (NON-KEY LOCKING)
ECL-230-P8	ASSEMBLY WITH GASKET, MOUNTING BRACKET, SPACERS AND SCREWS
ECL-230-K	ASSEMBLY WITH GASKET (KEY LOCKING)
ECL-230-KP8	ASSEMBLY WITH GASKET, MOUNTING BRACKET, SPACERS AND SCREWS
ECL-230-SK	ASSEMBLY WITH GASKET (KEY LOCKING)
ECL-230-SKP8	ASSEMBLY WITH GASKET, MOUNTING BRACKET, SPACERS AND SCREWS

AVAILABLE FINISHES: (MB) MATT BLACK OR (MW) MATT WHITE



**eclipse** SERIES

NOTE: TORQUE MOUNTING BRACKET SCREWS TO 14 ±3 IN./LBS.

SPACER X DIM.	A	B	C	D
	1.17	1.21	1.24	1.27

CUSTOMER PRINT  
PATENTED  
SHEET 1 OF 2

**EBERHARD MANUFACTURING CO.**  
DIVISION OF  
THE EASTERN COMPANY  
CLEVELAND, OHIO 44149-0712

THIS DOCUMENT IS UNCLASSIFIED WITH ABBREV		DATE	
DATE	BY	DATE	BY
11-14-02	FLP	11-14-02	FLP
11-14-02	FLP	11-14-02	FLP
11-14-02	FLP	11-14-02	FLP
11-14-02	FLP	11-14-02	FLP
11-14-02	FLP	11-14-02	FLP

SQUEEZE LATCH ASSEMBLY NON  
AND KEY LOCKING WITH GASKET  
ECL-230

**eclipse** AND RECEPTACLE ARE REGISTERED TRADEMARKS OF  
EBERHARD MANUFACTURING CO. DIVISION OF THE EASTERN CO.

SUPersedes DRAWING ECL-230 CHART DATED 11-4-02.

C:\TEMP\30368\ebd-864-15-985-66403-8472\ECL-230 CH1 SH1.dwg