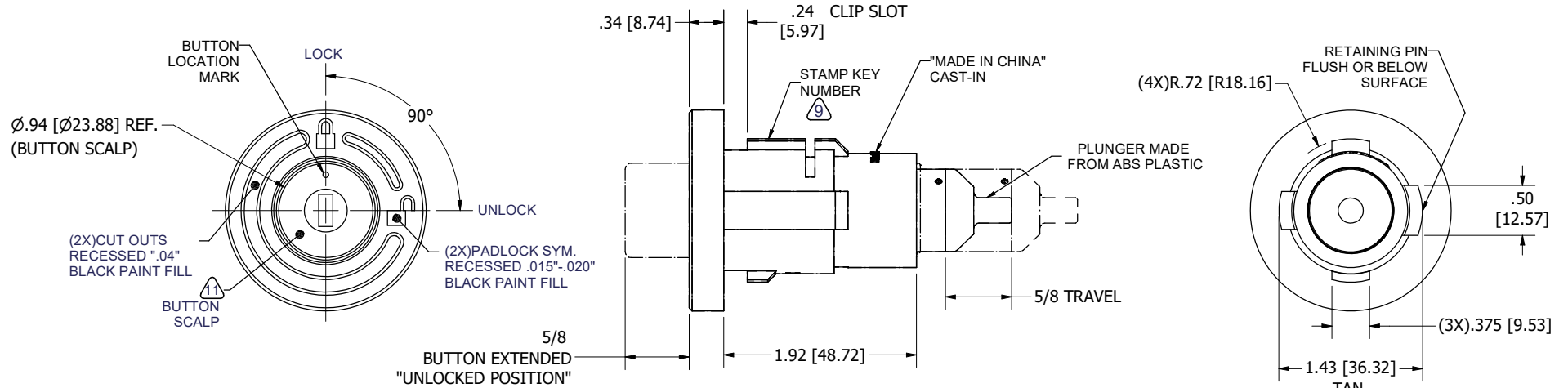
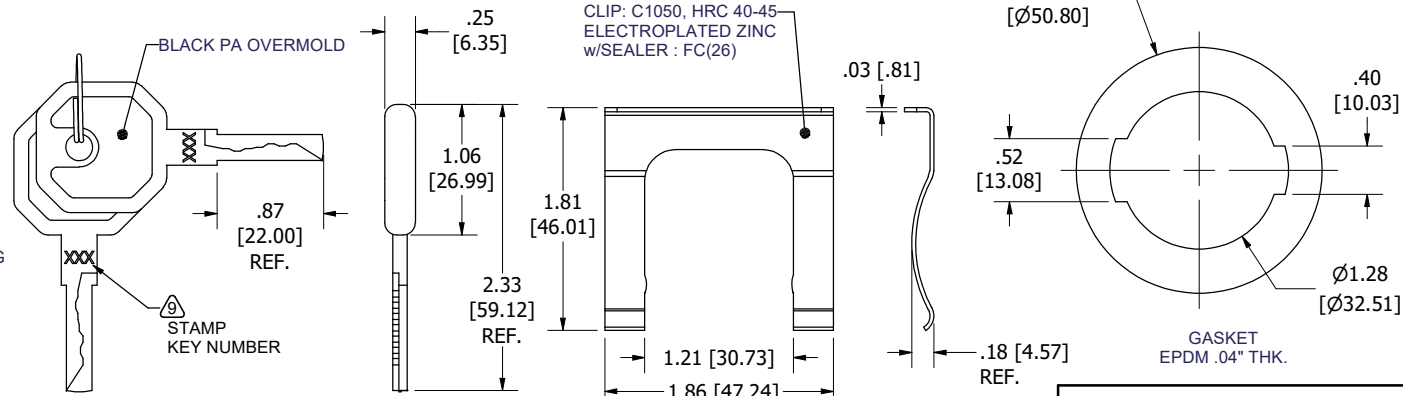
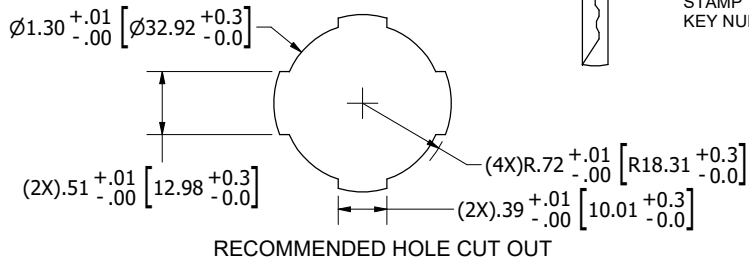


**CONFIDENTIAL NOTICE:** This drawing and the designs, specifications, and engineering information hereon are the property of Eberhard Manufacturing Company and are not to be disseminated or reproduced without express written consent. This drawing is loaned in confidence and then only for the consideration of the matter disclosed hereon. In accepting loan of this drawing, recipient agrees to keep it and the matter disclosed hereon in confidence and not to use or permit their use in any way detrimental to Eberhard Manufacturing Company, Division of The Eastern Company, 21944 Drake Road, Cleveland, Ohio, 44149-9712 © 2021 EBERHARD MFG. CO.

REVISION HISTORY					
REV	DESCRIPTION	EN	DATE	REV. BY	APVD BY
INITIAL RELEASE		6127	12/1/2023	M.M.	M.R.



- NOTES:
1. REMOVE ALL SHARP EDGES.
  2. SHOWN IN "LOCK" POSITION.
  3. KEY REMOVABLE IN "LOCK" AND "UNLOCK" POSITION.
  4. PLATING AND COSMETIC DEFECTS NOT ALLOWED SUCH AS PEELING, STAINS, BLISTERS, SCRATCHES.
  5. CUT OUTS AND PICTOGRAMS MUST BE CLEAN FROM DIRT AND EXCESS GREASE.
  6. KEY INSERTION AND ROTATION MUST BE SMOOTH.
  7. PUSH BUTTON AND PLUNGER MUST MOVE FREELY IN THE "UNLOCK" POSITION.
  8. LUBRICATE INSIDE COMPONENTS.
  9. KEY NUMBER STAMP ON KEY AND LOCK BODY.
  10. FINISH: BRIGHT DUPLEX NICKEL CHROME : FC(03).
  11. BUTTON SCALP FINISH- CHROMATE CONVERSION COATING PER MIL-C-5541, TOP COATED WITH BLACK POWDER.
  12. DIMENSIONS: INCHES [MM].



THIS DOCUMENT IS IN ACCORDANCE WITH ASME Y14.5-2009			DATE		NAME	
LINEAR MEASUREMENT (INCH/MM)			12/1/2023		DWN. BY	
UNLESS OTHERWISE SPECIFIED TOLERANCES ARE AS FOLLOWS:			M.M.		SCALE	
ANGLES:	± 2°	± .2°	1:1		CHK BY	
2 PLACE DEC.:	± .015	± .38	MATERIAL		PART NUMBER	
3 PLACE DEC.:	± .010	± .25	ZINC, PA, AL, BRASS		DXPB260KD-113	
ALL HOLES:	± .005	± .13	S.S., STEEL, ABS			

**EBERHARD MANUFACTURING CO.**  
DIVISION OF  
THE EASTERN COMPANY  
CLEVELAND, OHIO 44149-9712

**PUSH BUTTON LOCK ASSEMBLY**

**ZINC, PA, AL, BRASS**  
S.S., STEEL, ABS

**DXPB260KD-113**