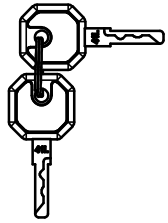
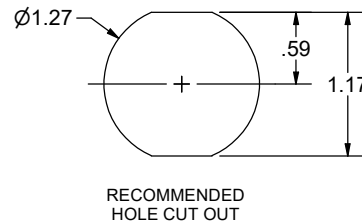
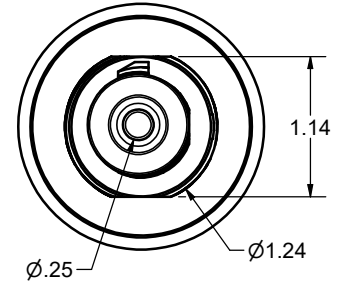
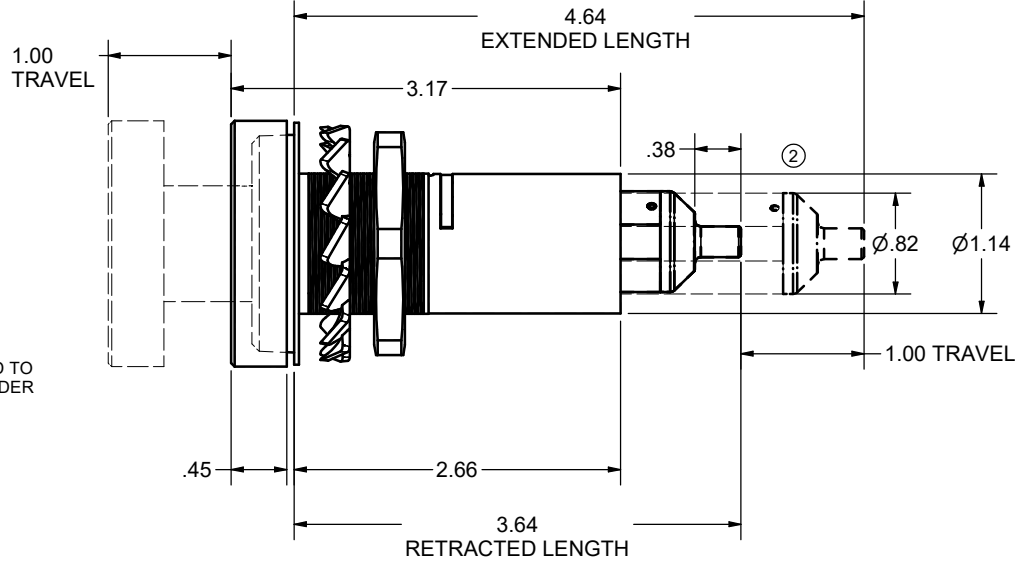
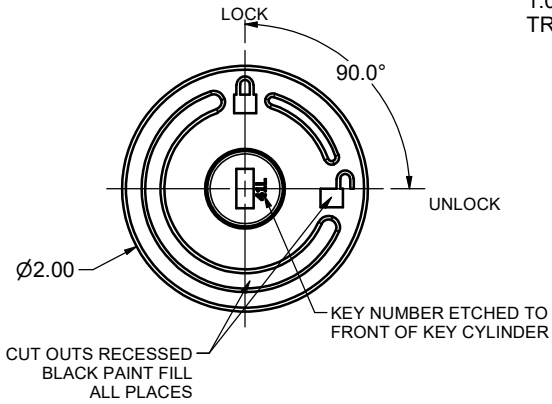


CONFIDENTIAL NOTICE: This drawing and the designs, specifications, and engineering information hereon are the property of Eberhard Manufacturing Company and are not to be disseminated or reproduced without express written consent. This drawing is loaned in confidence and then only for the consideration of the matter disclosed hereon. In accepting loan of this drawing, recipient agrees to keep it and the matter disclosed hereon in confidence and not to use or permit their use in any way detrimental to Eberhard Manufacturing Company, Division of The Eastern Company, 21944 Drake Road, Cleveland, Ohio, 44149-9712 © 2026 EBERHARD MFG. CO.

REVISION HISTORY					
REV	DESCRIPTION	EN	DATE	REV. BY	APVD BY
-	RELEASED PER NPD 50193-8	6242	3/20/2026	DJK	MR
1	UPDATED NOTE SECTION	6243	3/27/2026	DJK	MR
2	PLUNGER CHANGED FROM CUP TO CONE	6244	4/2/2026	DJK	MR



2 KEYS SUPPLIED
SCALE 1:2



- ① NOTES:
- EBERHARD AVAILABLE FINISH:
(03) BRIGHT DUPLEX NICKEL CHROME (SC3)
 - SHOWN IN LOCKED POSITION.
 - KEY REMOVABLE IN BOTH "LOCK" AND "UNLOCK" POSITIONS.
 - LOCK TO BE SUPPLIED WITH 2 KEYS ON A KEY RING
 - TO ORDER EITHER ONE OR TWO REPLACEMENT KEYS:
1 KEY: LNL-74-118XXRW
2 KEYS: LNL-74-018XXRW
 - BUTTON FUNCTIONALITY
LOCKED POSITION: PUSH BUTTON AND PLUNGER ARE RETRACTED INTO LOCK HOUSING.
UNLOCKED POSITION: PUSH BUTTON AND PLUNGER MOVE CONCURRENTLY WITH 1" TRAVEL

THIS DOCUMENT IS IN ACCORDANCE WITH ASME Y14.5-2009

LINEAR MEASUREMENT: INCH	DATE
UNLESS OTHERWISE SPECIFIED TOLERANCES ARE AS FOLLOWS:	3/20/2026
ANGLES: ± 2°	DWN. BY
2 PLACE DEC.: ± .03	DJK
3 PLACE DEC.: ± .015	SCALE
ALL HOLES: ± .005	1:1
	CHK. BY

CUSTOMER PRINT

EBERHARD MANUFACTURING CO.
DIVISION OF
THE EASTERN COMPANY
CLEVELAND, OHIO 44149-9712

NAME	PALM PUSH BUTTON LOCK ASSEMBLY W/ 1" STROKE AND SLIP FEATURE
MATERIAL	
PART NUMBER	DXPB250KD