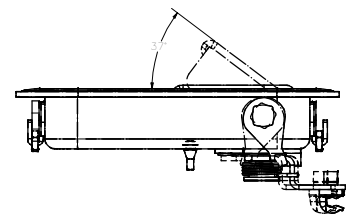
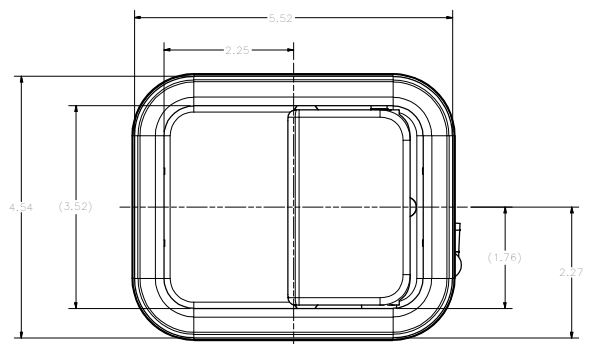
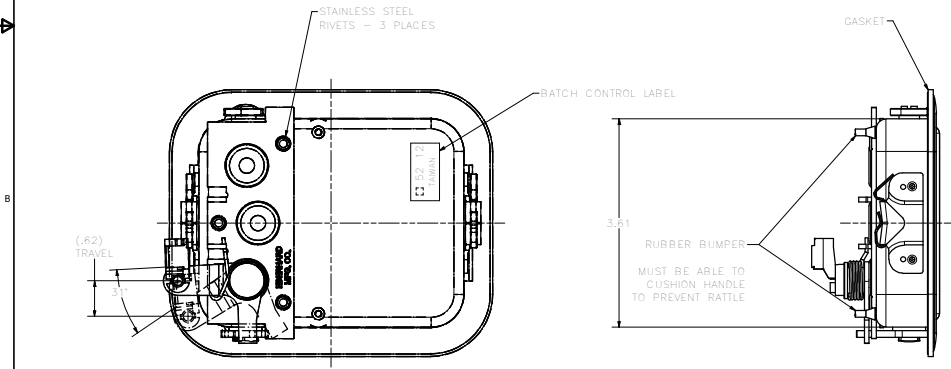
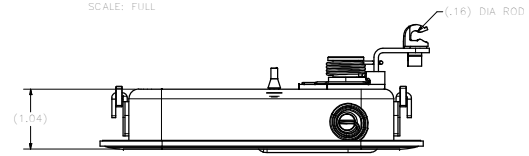
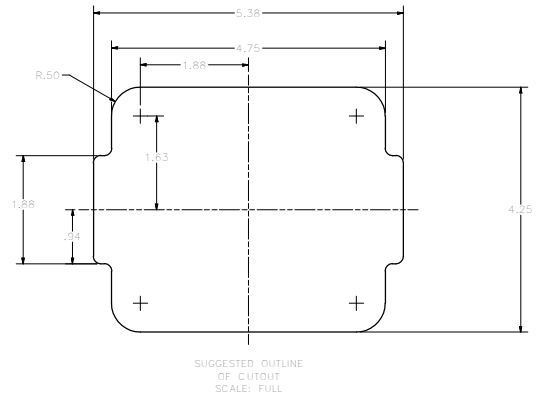
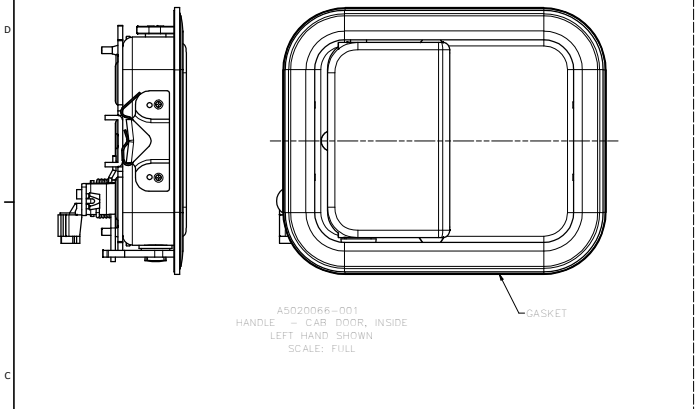


CONFIDENTIAL NOTICE: This drawing and the design specifications and engineering drawings contained herein are the property of Eberhard Manufacturing Company and are not to be distributed or reproduced without written consent. The drawing is issued in confidence and may only be used for the purpose of manufacturing the product described herein. No copying, reproduction, or distribution of this drawing, without express written consent, is permitted. Eberhard Manufacturing Company, Division of The Eastern Company, 10000 North 10th Street, Omaha, NE 68114. © 2007 EBERHARD MFG. CO.

REVISION HISTORY			
REV	DESCRIPTION	EN	DATE
1	RELEASED WAS M116673	5616	8/23/2007



- NOTES:
- 1) THIS PART COMPLIES WITH FMVSS 206 "DOOR LOCKS AND DOOR RETENTION COMPONENTS".
  - 2) THESE HANDLES TO BE SOLD TO AUTOCAR LLC.
  - 3) HANDLE CASE TO BE .063" STEEL AND HANDLE TO BE .075" STEEL, (08) EXTERIOR BRIGHT POLISHED CHROME (SC4) PLATED WITH INSIDE OF CAVITY PAINTED WITHIN .25" OF THE FRONT FACE WITH METALIC GREY COLOR.
  - 4) \* INDICATES GREASED AREAS. INCLUDES UPPER AND LOWER HANDLE PIVOTS TO PREVENT WATER LEAKS PAST THOSE POINTS.
  - 5) RETAINING WEDGE IS REFERENCE AND NOT PART OF THIS ASSEMBLY.

CUSTOMER PRINT  
SHEET 1 OF 2  
RIGHT HAND SHOWN  
LEFT HAND OPPOSITE

Eberhard Manufacturing Co.		DIVISION OF THE EASTERN COMPANY	
10000 North 10th Street Omaha, NE 68114		TEL: 402-491-1111	
FAX: 402-491-1112		WWW.EBERHARDMFG.COM	
HANDLE - CAR DOOR, OUTSIDE		PART NUMBER: AS020067-001	

C:\Working\_Folder\AmeFProd\AS020067\AS020067-001\_CH\_BHT.dwg