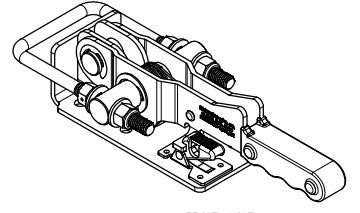
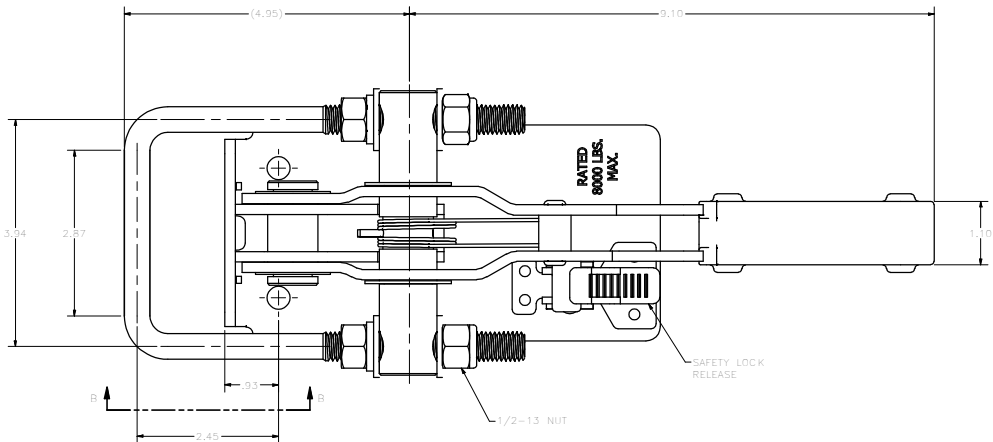
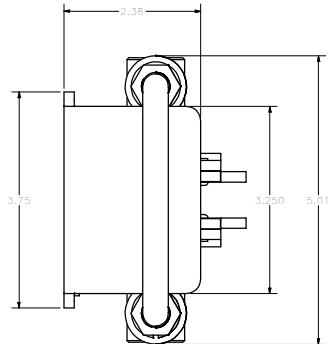
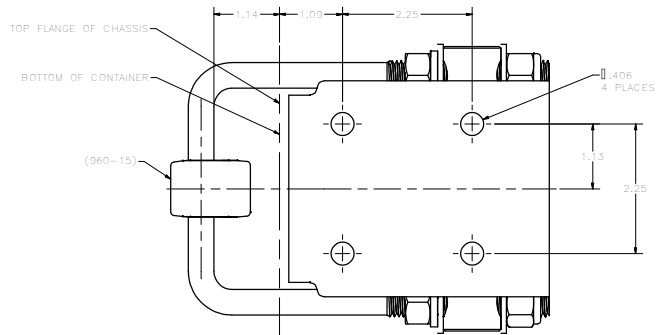
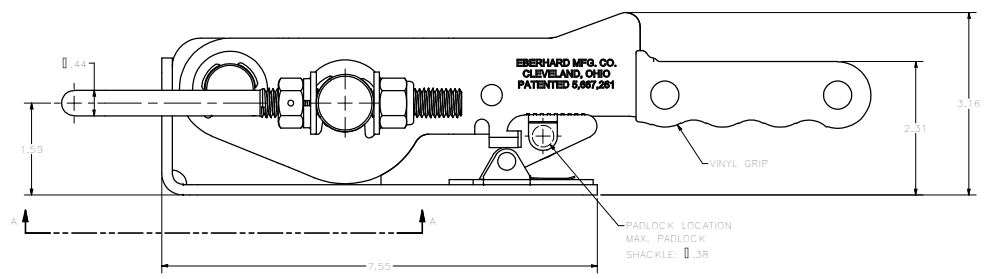
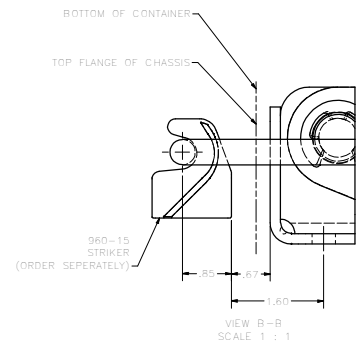


**CONFIDENTIAL NOTICE** This drawing and the design specifications and engineering information disclosed herein are the property of Eberhard Manufacturing Company and are not to be distributed or reproduced without express written consent. The drawing is issued in confidence and may only be used for the purpose of manufacturing the product shown. It is the responsibility of the user to ensure that the product is manufactured in accordance with the drawing and not to use the drawing for any other purpose. Eberhard Manufacturing Company, 10000 Lorain Road, Cleveland, Ohio 44130-2000. © 2012 EBERHARD MFG. CO.

REVISION HISTORY			
REV	DESCRIPTION	EN	DATE
1	REVISED, REDRAWN AND CONVERTED TO 3D	5606	6-14-13



SCALE: HALF



NOTE: ALL 3/16" STAMPED PARTS ARE MADE FROM HIGH STRENGTH LOW ALLOY STEEL MINIMUM YIELD: 80,000 PSI

VIEW A-A  
SCALE 1 : 1  
MOUNTING HOLE PATTERN  
"U" BOLT IN LOCKED POSITION

CUSTOMER PRINT  
SHEET 1 OF 2

Eberhard Manufacturing Company		Division of The Eastern Company Manufacturing Division	
HEAVY DUTY DRAW LATCH WITH 7/16" DIA. "U" BOLT LESS GRIP		Part No.	960
REV	DESCRIPTION	DATE	BY
1	REVISED, REDRAWN AND CONVERTED TO 3D	6-14-13	5606

SUPERSEDES DRAWING 960 SHEET 1 OF 2 DATED 12-17-83

C:\Working\_Folder\view\960\960.SHT.dwg