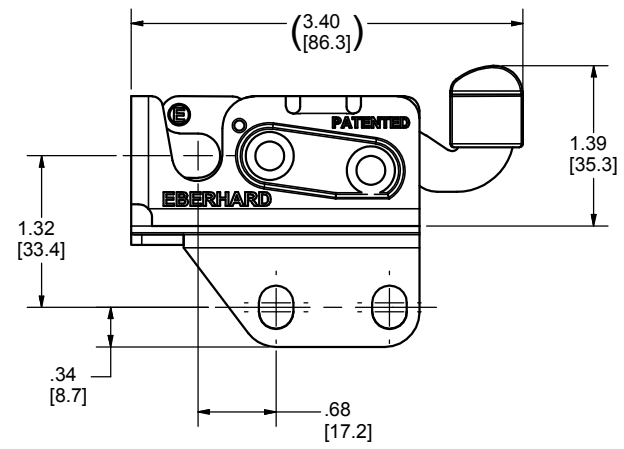
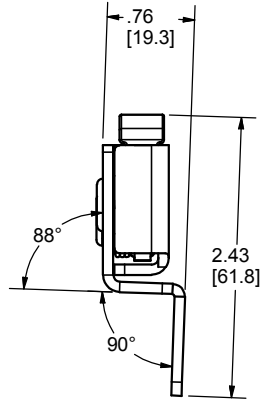
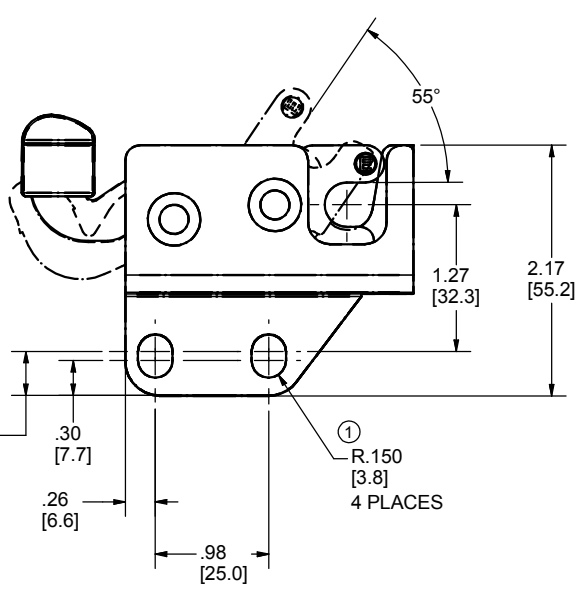
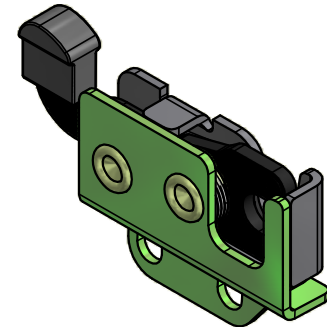


CONFIDENTIAL NOTICE: This drawing and the designs, specifications and engineering information disclosed hereon are the property of Eberhard Manufacturing Company and are not to be disseminated or reproduced without express written consent. The drawing is loaned in confidence and then only for consideration of the matter disclosed hereon. In accepting loan of this drawing, recipient agrees to keep it and the matter disclosed hereon in confidence and not to use nor permit their use in any way detrimental to Eberhard Manufacturing Company, Division of the Eastern Company, 21944 Drake Road, Cleveland, Ohio 44148-9712 © 2014 EBERHARD MFG. CO.

REVISION HISTORY			
REV	DESCRIPTION	EN	DATE
-	RELEASED WAS M10416	5544	3/9/2012
1	R.150 4 PLACES WAS .299 DIA. TYP.	5684	12-19-14



NOTES:

- 1) FOR A BOX OF 50 PCS, ORDER PN 88-231-R-BX50-64
- 2) CAP MATERIAL TO BE NYLON 6/6
FINISH (64) ZINC W/ YELLOW CONVERTER

CUSTOMER PRINT
SHEET 1 OF 2

EBERHARD MANUFACTURING CO. DIVISION OF THE EASTERN COMPANY CLEVELAND, OHIO 44149-9712	
SINGLE STAGE MINI-ROTARY LOCK ASSEMBLY WITH 2° OFFSET	
MATERIAL	PART NUMBER
	88-231-R

UNLESS OTHERWISE SPECIFIED TOLERANCES ARE AS FOLLOWS:	DATE	3/9/2012
	DR BY	RBernot
ANGLES: ∠ 20	SCALE	*
2 PLACE DEC: ∠ .03	CHK BY	
3 PLACE DEC: ∠ .015		
ALL HOLES: ∠ .005		