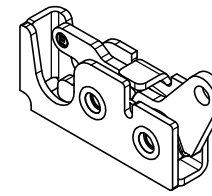
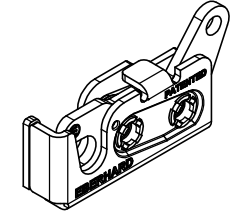


CONFIDENTIAL NOTICE: This drawing and the designs, specifications and engineering information disclosed hereon are the property of Eberhard Manufacturing Company and are not to be disseminated or reproduced without express written consent. The drawing is loaned in confidence and then only for consideration of the matter disclosed hereon. In accepting loan of this drawing, recipient agrees to keep it and the matter disclosed hereon in confidence and not to use nor permit their use in any way detrimental to Eberhard Manufacturing Company, Division of the Eastern Company, 2184 Drake Road, Cleveland, Ohio 44148-9712. © 2012 EBERHARD MFG. CO.

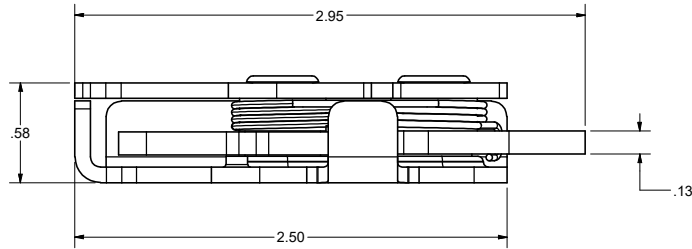
REVISION HISTORY					
REV	DESCRIPTION	EN	DATE	REV BY	APVD BY
1	RELEASED WAS M11037	5663	2/28/2014		
1	CHANGE BOLT CALLOUT NOTE 1. ADD THREAD CALLOUT	5665	3/14/2014		
2	ADDED NOTE	5854	5-25-18	FLP	MR



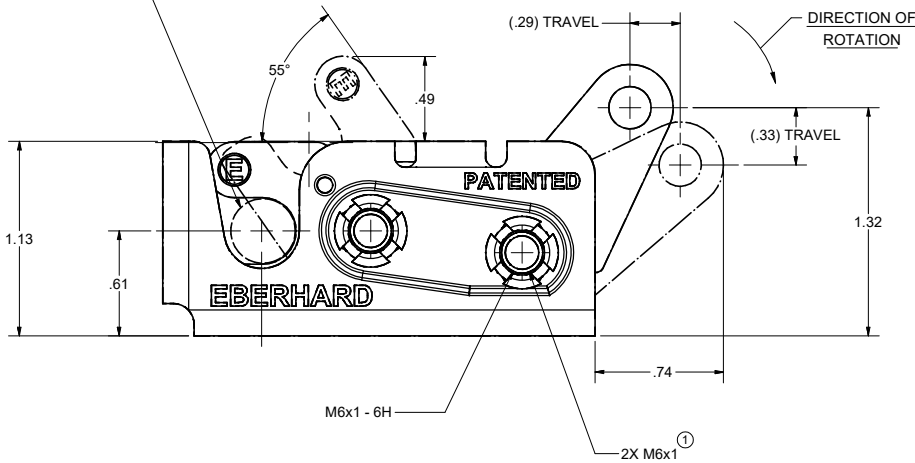
8-240-ML



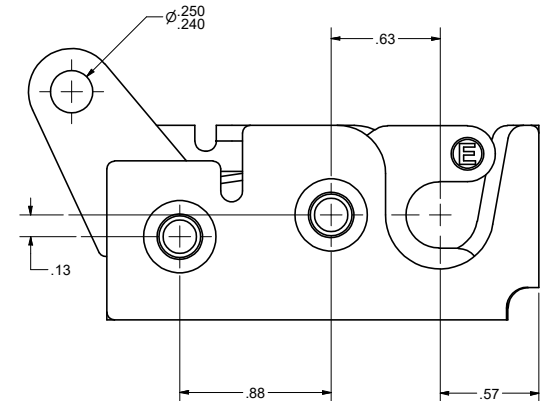
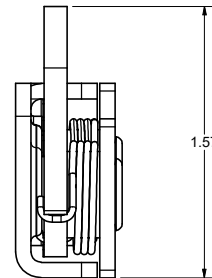
8-240-MR



Ø.38 STRIKER PIN  
REF. 240-52U  
NOT SUPPLIED



DIRECTION OF ROTATION



PATENTED  
CUSTOMER PRINT  
SHEET 1 OF 2  
RIGHT HAND SHOWN  
LEFT HAND OPPOSITE

- NOTES:
- USE M6x1 GRADE 10.9 BOLTS FOR INSTALLATION RECOMMENDED TORQUE FOR TIGHTENING: 14 FT-LBS.
  - MAX LOAD RATING: 750 LBS.
  - FINISH: (54) EVERLUBE INTERNAL COMPONENTS
  - TO ORDER 150 PIECES PER BOX, ORDER 8-240-MR/L-BX150-54.



MINI-ROTARY IS A TRADEMARK OF EBERHARD MFG. CO.,  
DIVISION OF THE EASTERN COMPANY.

THIS DOCUMENT IS IN ACCORDANCE WITH ASME Y14.5-2009		DATE 2/28/2014	NAME TWO STAGE MINI-ROTARY LOCK WITH M6x1 MOUNTING THREADS
UNLESS OTHERWISE SPECIFIED TOLERANCES ARE AS FOLLOWS:		DR BY EBERHARD	MATERIAL
LINEAR MEASURE INCH	MM	SCALE FULL	PART NUMBER 8-240-MRL
ANGLES	# 2' # 2'	CHK BY	
2 PLACE DEC.	# .03 # .76		
3 PLACE DEC.	# .015 # .38		
ALL HOLES	# .005 # .13		