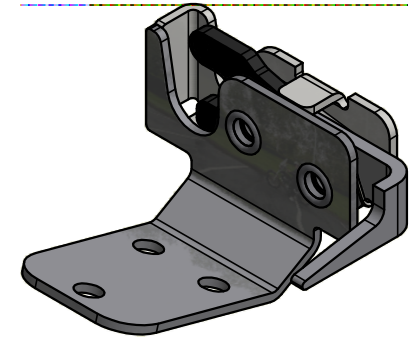
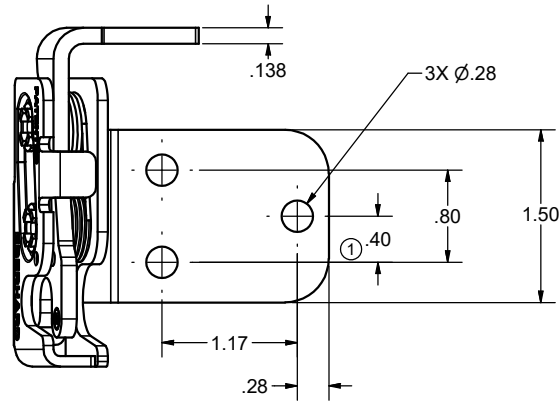
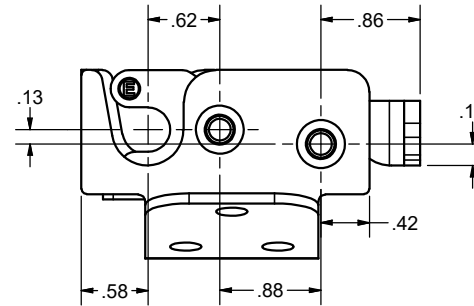
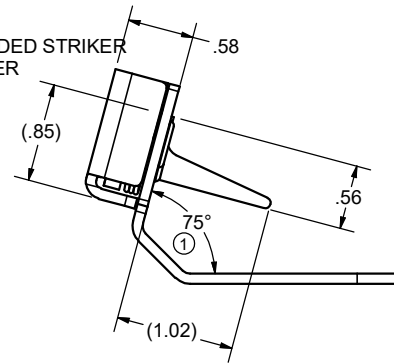
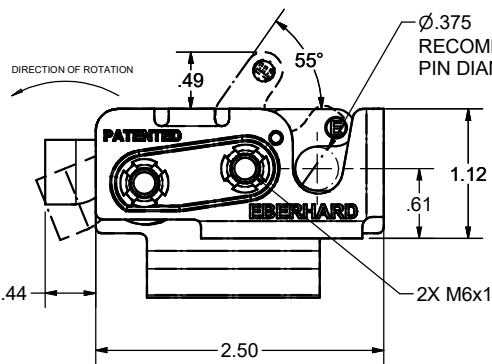


**CONFIDENTIAL NOTICE:** This drawing and the designs, specifications and engineering information disclosed hereon are the property of Eberhard Manufacturing Company and are not to be disseminated or reproduced without express written consent. The drawing is loaned in confidence and then only for consideration of the matter disclosed hereon. In accepting loan of this drawing, recipient agrees to keep it and the matter disclosed hereon in confidence and not to use nor permit their use in any way detrimental to Eberhard Manufacturing Company, Division of the Eastern Company, 21944 Drake Road, Cleveland, Ohio 44148-9712 © 2010 EBERHARD MFG. CO.

REVISION HISTORY					
REV	DESCRIPTION	EN	DATE	REV BY	APVD BY
-	RELEASED WAS 79-231-MRL	5484	12/31/2010		
1	ADDED DIMENSIONS FOR REFERENCE ADDED NOTE #2	5596	3/22/2013		
2	ADDED: NOTE	5826	10-27-17	FLP	MR



79-231-ML



**WARNING**  
THIS PRODUCT MUST NOT BE USED FOR PERSONAL RESTRAINT APPLICATIONS

MINI ROTARY IS A TRADEMARK OF EBERHARD MFG. CO., DIVISION OF THE EASTERN COMPANY.

CUSTOMER PRINT SHEET 1 OF 2

**EBERHARD MANUFACTURING CO.**  
DIVISION OF  
THE EASTERN COMPANY  
CLEVELAND, OHIO 44148-9712

NAME: SINGLE STAGE MINI-ROTARY LOCK ASSEMBLY WITH M6 MOUNTING THREADS

MATERIAL: PART NUMBER: 79-231-ML

UNLESS OTHERWISE SPECIFIED TOLERANCES ARE AS FOLLOWS		DATE: 12/31/2010
ANGLES: ± 2°		DR BY: RBernot
2 PLACE DEC: ± .03		SCALE: FULL
3 PLACE DEC: ± .015		CHK BY:
ALL HOLES: ± .005		

- NOTES:  
 1) USE M6X1 CLASS 8.8 BOLTS FOR INSTALLATION. RECOMMENDED INSTALLATION TORQUE: 14 FT-LB.  
 ① 2) ALL DIMENSIONS FOR REFERENCE ONLY  
 ② 3) FOR ONE ASSEMBLY IN POLY BAG ORDER: 79-231-MLPK-BG.

FINISH: (64) ZINC & YELLOW CONVERTER WITH EVERLUBE INTERNAL COMPONENTS  
 (BG) BEARING GREASE WITH EVERLUBE INTERNAL COMPONENTS

SUPERSEDES DRAWING 79-231-MRL DATED 6/1/2010

C:\Working\_Folder\Archive\Pro2\230\_179-231-ML\_SH1.idw