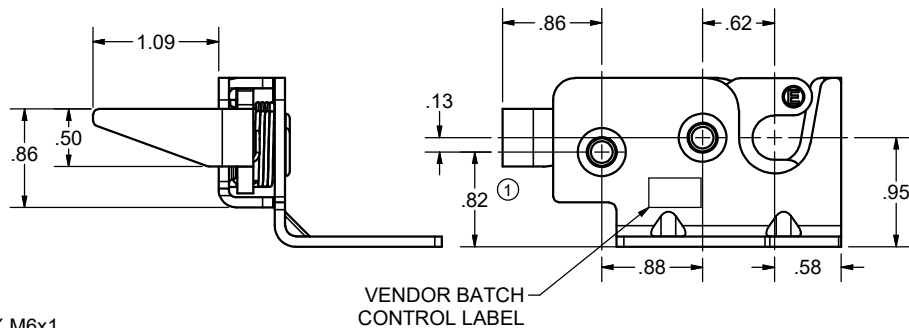
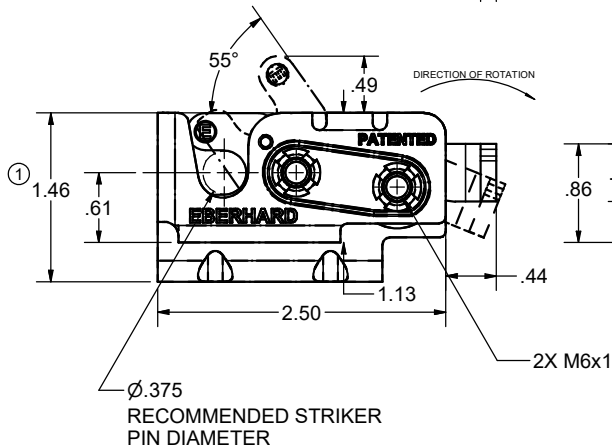
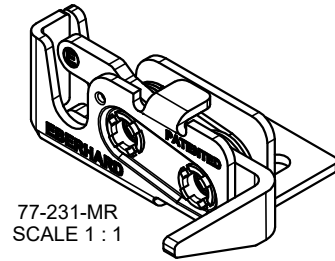
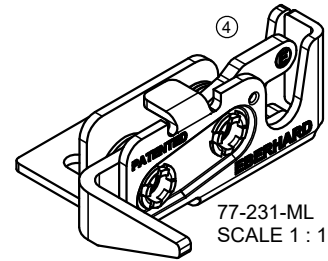
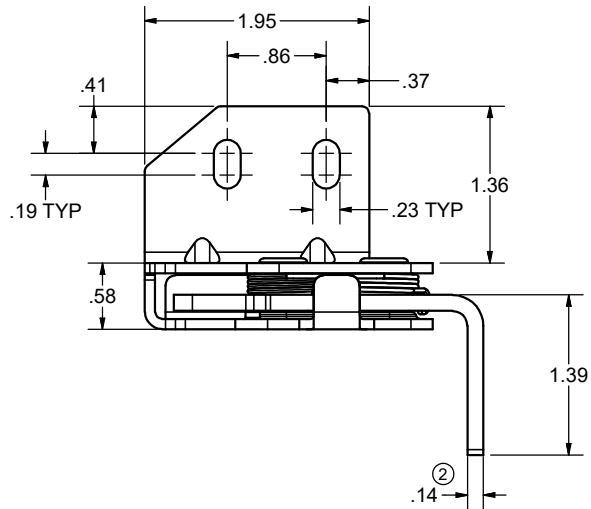


CONFIDENTIAL NOTICE: This drawing and the designs, specifications and engineering information disclosed hereon are the property of Eberhard Manufacturing Company and are not to be disseminated or reproduced without express written consent. The drawing is loaned in confidence and then only for consideration of the matter disclosed hereon. In accepting loan of this drawing, recipient agrees to keep it and the matter disclosed hereon in confidence and not to use nor permit their use in any way detrimental to Eberhard Manufacturing Company, Division of the Eastern Company. 21944 Drake Road, Cleveland, Ohio 44149-9712 © 2010 EBERHARD MFG. CO.

REVISION HISTORY					
REV	DESCRIPTION	EN	DATE	REV BY	APVD BY
	RELEASED, WAS 3-M8005-1R	5454	5/21/2010		
1	1.46 WAS 1.33, .82 WAS .69, ADD .95	5457	6/11/2010		
2	.14 WAS .13, REMOVE NOTE 2, LOAD RATING, DIA .375 WAS .38	5464	7/30/2010		
3	ADDED NOTE 3	5596	3/22/2013		
4	ADD LEFT HAND VIEW	5809	6/30/2017	VRB	MR
5	ADDED NOTE	5826	10-27-17	FLP	MR



WARNING
THIS PRODUCT MUST NOT BE USED FOR PERSONAL RESTRAINT APPLICATIONS

MINI ROTARY IS A TRADEMARK OF EBERHARD MFG. CO., DIVISION OF THE EASTERN COMPANY.

CUSTOMER PRINT SHEET 1 OF 2

RIGHT HAND SHOWN LEFT HAND OPPOSITE

- ② NOTES:
 1) USE M6X1 CLASS 8.8 BOLTS FOR INSTALLATION. RECOMMENDED INSTALLATION TORQUE: 14 FT-LB.
 ③ 3) ALL DIMENSIONS FOR REFERENCE ONLY.
 ④ 4) FOR ONE ASSEMBLY IN POLY BAG ORDER: 77-231-MR/LPK-BG.

FINISH: (64) ZINC & YELLOW CONVERTER WITH EVERLUBE INTERNAL COMPONENTS (BG) BEARING GREASE WITH EVERLUBE INTERNAL COMPONENTS

UNLESS OTHERWISE SPECIFIED TOLERANCES ARE AS FOLLOWS:		DATE	5/28/2010
ANGLES: ± 2'		DR BY	RBernot
2 PLACE DEC: ± .03		SCALE	FULL
3 PLACE DEC: ± .015		CHK BY	
ALL HOLES: ± .005			

EBERHARD MANUFACTURING CO. DIVISION OF THE EASTERN COMPANY CLEVELAND, OHIO 44149-9712	
NAME	SINGLE STAGE MINI-ROTARY LOCK ASSEMBLY WITH M6 MOUNTING THREADS
MATERIAL	PART NUMBER
	77-231-MR/L