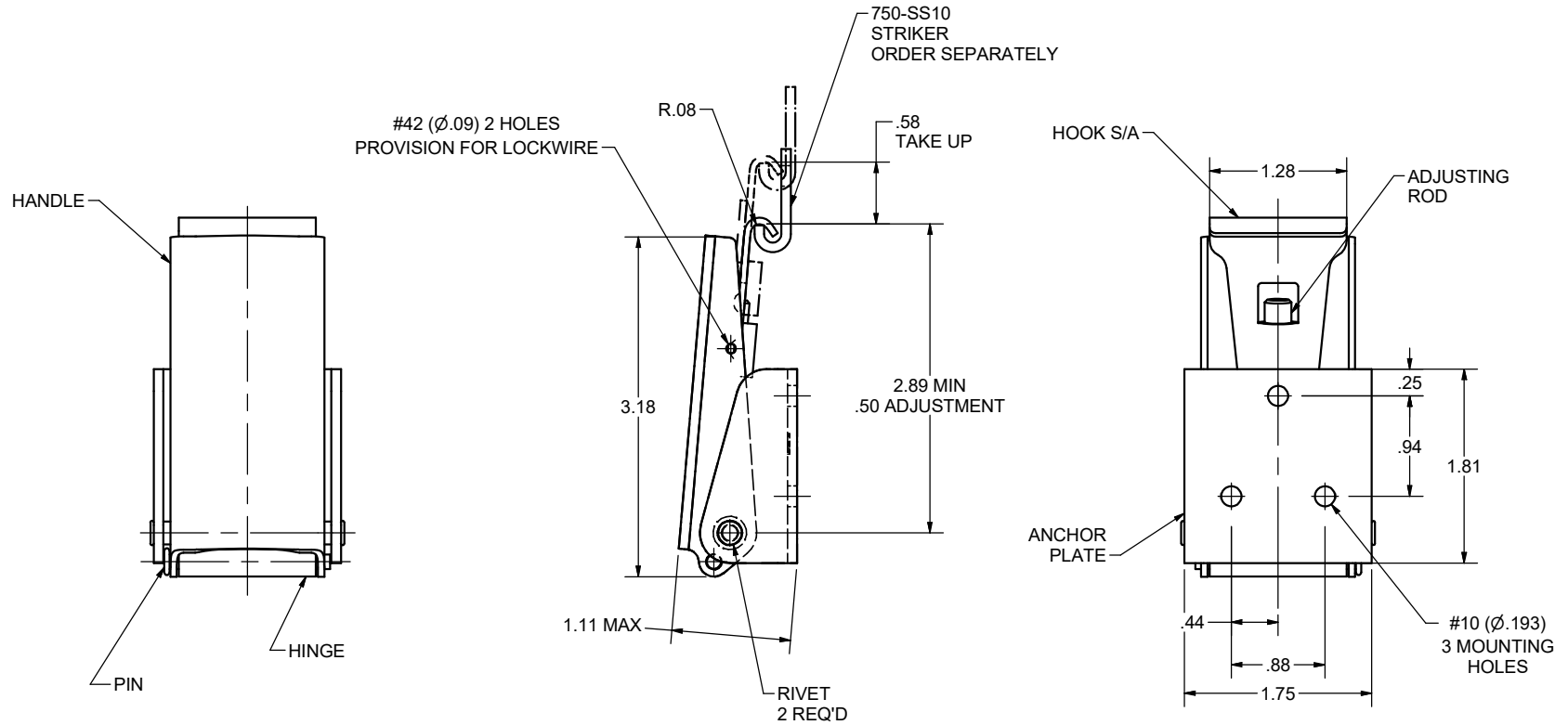


CONFIDENTIAL NOTICE: This drawing and the designs, specifications and engineering information disclosed hereon are the property of Eberhard Manufacturing Company and are not to be disseminated or reproduced without express written consent. The drawing is loaned in confidence and then only for consideration of the matter disclosed hereon. In accepting loan of this drawing, recipient agrees to keep it and the matter disclosed hereon in confidence and not to use nor permit their use in any way detrimental to Eberhard Manufacturing Company, Division of the Eastern Company, 21944 Drake Road, Cleveland, Ohio 44149-9712 © 2012 EBERHARD MFG. CO.

REVISION HISTORY					
REV	DESCRIPTION	EN	DATE	REV. BY	APVD. BY
1	RELEASE, ADDED SHEET 1 PER ECR# 75	5887	1/25/2019	KAB	MR



CUSTOMER PRINT
SHEET 1 OF 2

EBERHARD MANUFACTURING CO.
DIVISION OF
THE EASTERN COMPANY
CLEVELAND, OHIO 44149-9712

ADJUSTABLE DRAW LATCH ASSEMBLY

THIS DOCUMENT IS IN ACCORDANCE WITH	
ASME Y14.15-2009	DATE: 1/25/2019
UNLESS OTHERWISE SPECIFIED TOLERANCES ARE AS FOLLOWS:	DESIGNER: K.Braun
ANGLES: ± 2° ± 2°	SCALE: FULL
2 PLACE DEC.: ± .03 ± .76	CHECKER: _____
3 PLACE DEC.: ± .015 ± .38	
ALL HOLES: ± .015 ± .13	

MATERIAL: -----	PART NUMBER: 750-SS
-----------------	---------------------

SUPERSEDES DRAWING 750-SS DATED 4-25-93.

C:\Working_Folder\Archive\Pro\750750750-SS SH1.idw