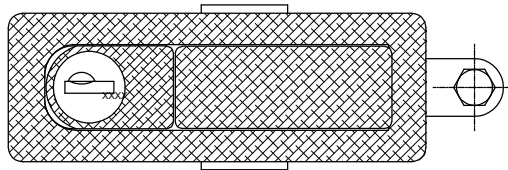


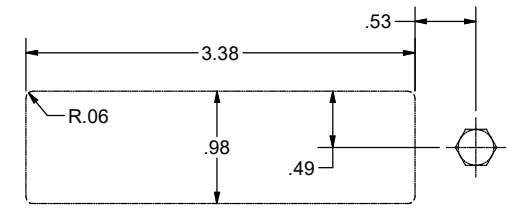
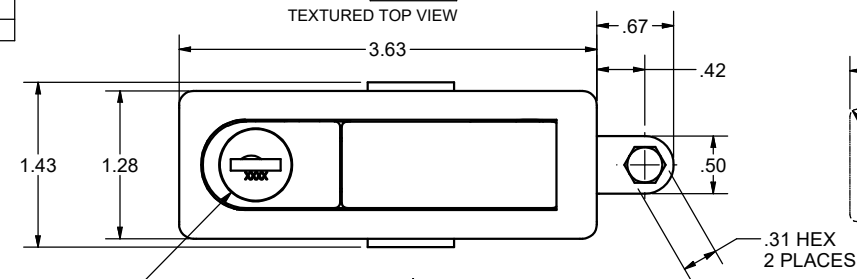
CONFIDENTIAL NOTICE: This drawing and the designs, specifications and engineering information disclosed hereon are the property of Eberhard Manufacturing Company and are not to be disseminated or reproduced without express written consent. The drawing is loaned in confidence and then only for consideration of the matter disclosed hereon. In accepting loan of this drawing, recipient agrees to keep it and the matter disclosed hereon in confidence and not to use nor permit their use in any way detrimental to Eberhard Manufacturing Company, Division of the Eastern Company, 21944 Drake Road, Cleveland, Ohio 44149-9712. © 2013 EBERHARD MFG. CO.

REVISION HISTORY					
REV	DESCRIPTION	EN	DATE	REV.BY	APVD.BY
	REVISED, REDRAWN AND CONVERTED TO 3D	5592	2-22-13		
1	REVISED NOTE #1 TO ADD NO OF KEYS	5596	3/22/13		
2	ADDED DOUBLE BITTED KEY OPTIONS PER PP13261	5976	11/13/2020	DJK	MR

PART NO.	LATCH	SURFACE APPEARANCE	AVAILABLE FINISHES	A	B	C
501-634-K	534-2X	TEXTURED	(05) (30)	.13	.80	2.43
501-635-K	535-2X	TEXTURED	(05) (30)	.75	1.25	2.86
501-636-K	536-2X	TEXTURED	(05) (30)	1.25	1.75	3.43
501-637-K	537-2X	TEXTURED	(05) (30)	1.75	2.25	3.89
501-634S-K	534S-2X	SMOOTH	(42) (03) (CS)	.13	.80	2.43
501-635S-K	535S-2X	SMOOTH	(42) (03) (CS)	.75	1.25	2.86
501-636S-K	536S-2X	SMOOTH	(42) (03) (CS)	1.25	1.75	3.43
501-637S-K	537S-2X	SMOOTH	(42) (03) (CS)	1.75	2.25	3.89

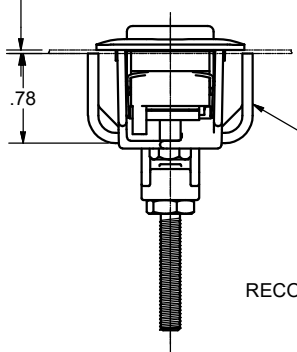


TEXTURED TOP VIEW



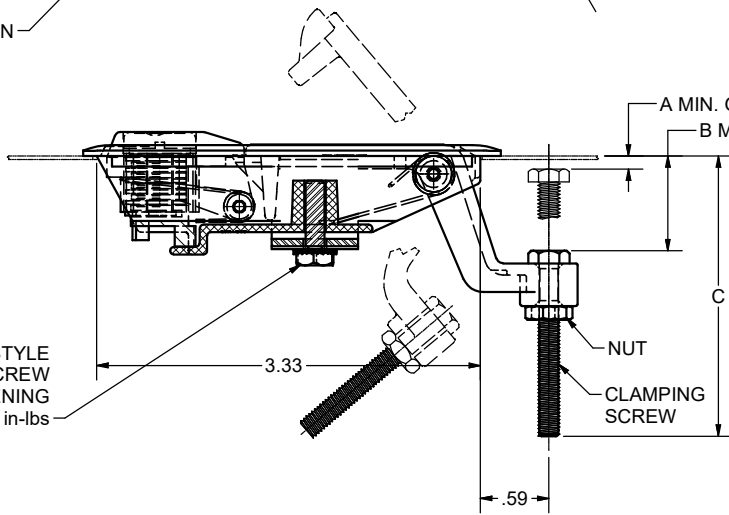
SUGGESTED OUTLINE OF CUTOUT

PANEL RANGE
.031 MIN./ .312 MAX



MOUNTING BRACKET

"SEMS" STYLE
HEX HEAD SCREW
RECOMMENDED TIGHTENING
TORQUE: 10-15 in-lbs



NUT
CLAMPING SCREW

- NOTES:
- "SEMS" STYLE SCREW, CLAMPING SCREW, NUT, AND MOUNTING BRACKET, 2-KEYS TO BE SHIPPED LOOSE IN A SECURED POLY BAG INSIDE LARGER POLY BAG TO PREVENT SCRATCHING.
 - FINISH DESCRIPTION:
 - A. UNPOLISHED CHROME, FC (05)
 - B. BLACK POWDER COAT, FC (30)
 - C. TEXTURED BLACK POWDER, FC (42)
 - D. BRIGHT CHROME, FC (03)
 - E. CAMARO SILVER, FC (CS)
 - CHECK WITH EBERHARD SALES ON KEY AVAILABILITY.
 - SINGLE BITTED KEY NO'S 501-510, 545 & 751 POTENTIALLY AVAILABLE.
 - DOUBLE BITTED KEY NO'S J201-J225 POTENTIALLY AVAILABLE.

EXAMPLE ORDER AS: 201DB-634-K-30

KEY NUMBER FINISH CODE
ADD "DB" FOR PART NUMBER
DOUBLE BITTED KEY

SUPERSEDES DRAWING 634-K CHART SHEET 1 OF 2 DATED 6-11-05

THIS DOCUMENT IS IN ACCORDANCE WITH ASME Y14.15-2009	
LINEAR MEASURE: INCH	DATE: 2/22/2013
UNLESS OTHERWISE SPECIFIED TOLERANCES ARE AS FOLLOWS:	DR BY: FLP
ANGLES: ± 2° ± 2°	SCALE: FULL
2 PLACE DEC: ± .03 ± .76	CHK BY:
3 PLACE DEC: ± .015 ± .38	
ALL HOLES: ± .005 ± .13	

CUSTOMER PRINT SHEET 1 OF 2

EBERHARD MANUFACTURING CO.
DIVISION OF
THE EASTERN COMPANY
CLEVELAND, OHIO 44149-9712

NAME	KEY LOCKING ADJUSTABLE TRIGGER LATCH W/ BRACKET	
MATERIAL	*	PART NUMBER
		634-K

C:\Working_Folder\Archive\Pro\634\634-K CH SH1.idw