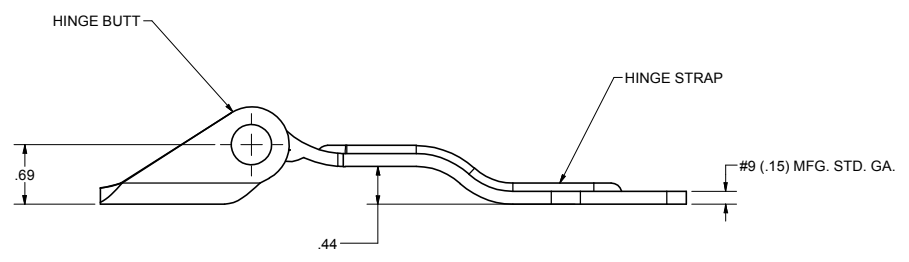
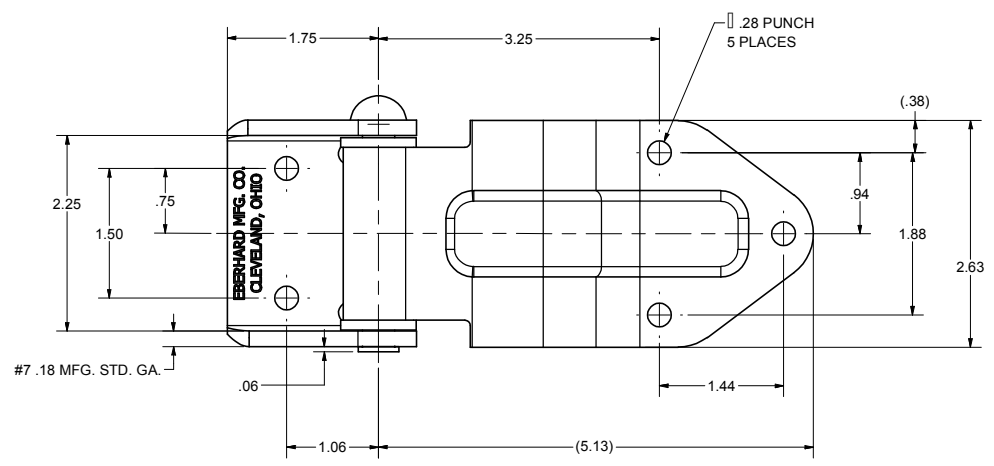
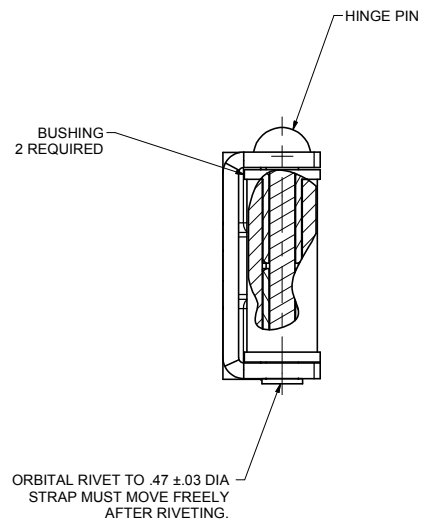
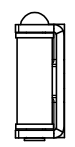
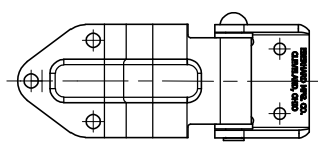


CONFIDENTIAL NOTICE: This drawing and the designs, specifications and engineering information disclosed hereon are the property of Eberhard Manufacturing Company and are not to be disseminated or reproduced without express written consent. The drawing is loaned in confidence and then only for consideration of the matter disclosed hereon. In accepting loan of this drawing, recipient agrees to keep it and the matter disclosed hereon in confidence and not to use nor permit their use in any way detrimental to Eberhard Manufacturing Company, Division of The Eastern Company, 2184 Drake Road, Cleveland, Ohio 44143-9712. © 2012 EBERHARD MFG. CO.

REVISION HISTORY			
REV	DESCRIPTION	EN	DATE
1	REVISED AND REDRAWN	5668	8/24/2012



NOTES:
1. FINISH: (25) ZINC WITH CLEAR



RIGHT HAND SHOWN
SCALE 1:2

CUSTOMER PRINT
SHEET 1 OF 2
LEFT HAND SHOWN
RIGHT HAND OPPOSITE

EBERHARD MANUFACTURING CO. DIVISION OF THE EASTERN COMPANY CLEVELAND, OHIO 44143-9712	
OVER THE SEAL TYPE STEEL FLUSH HINGE ASSEMBLY	
DATE: 8/22/2012 DRAWN BY: gkgas CHECKED BY:	PART NO: 5868-R/L

SUPERSEDES DRAWING 5868 DATED 9-25-1996