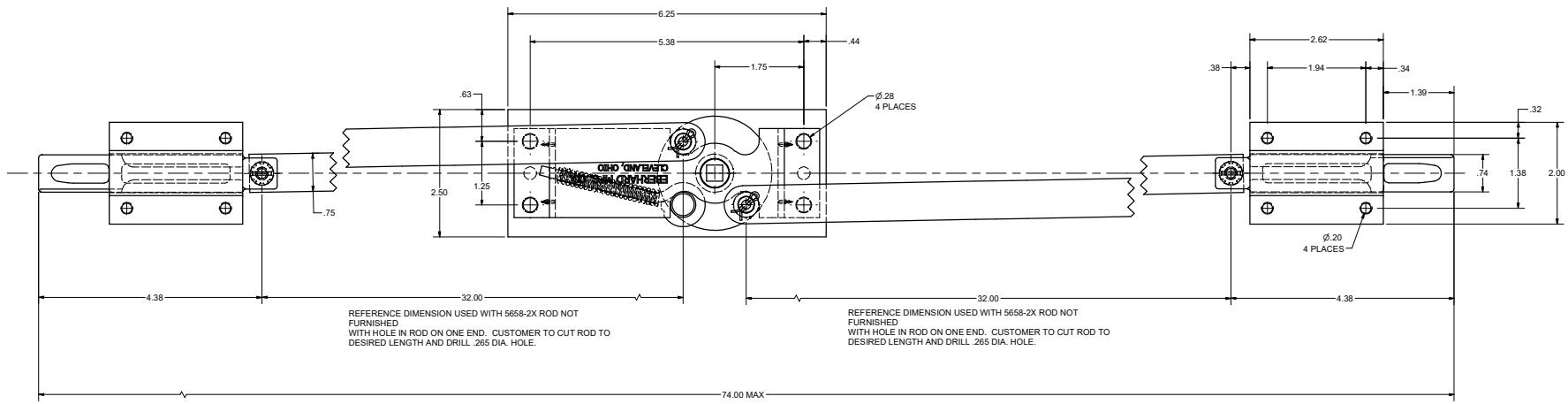


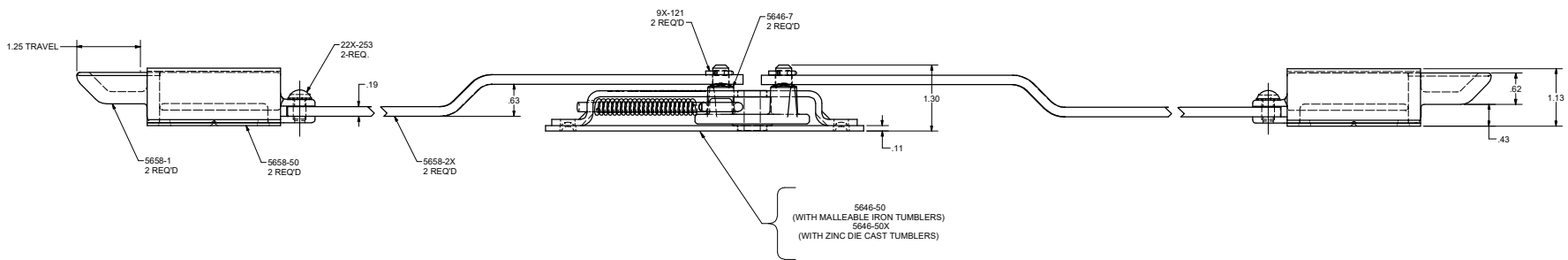
CONFIDENTIAL NOTICE: This drawing and the design, identification and engineering information disclosed herein are the property of Eberhard Manufacturing Company and are not to be disseminated or reproduced without express written consent. The drawing is issued in confidence and may only be reworked or modified in accordance with the drawing revision system. It is the customer's responsibility to ensure that the drawing is current and that the latest revision is used. Eberhard Manufacturing Company reserves the right to change design without notice. © 2015 EBERHARD MFG. CO.

REVISION HISTORY					
REV	DESCRIPTION	EN	DATE	REV BY	APVD BY
1	CONVERTED TO 3D	5697	4-3-15	FLP	MR



REFERENCE DIMENSION USED WITH 5658-2X ROD NOT FURNISHED WITH HOLE IN ROD ON ONE END. CUSTOMER TO CUT ROD TO DESIRED LENGTH AND DRILL .265 DIA. HOLE.

REFERENCE DIMENSION USED WITH 5658-2X ROD NOT FURNISHED WITH HOLE IN ROD ON ONE END. CUSTOMER TO CUT ROD TO DESIRED LENGTH AND DRILL .265 DIA. HOLE.



- NOTES:  
 1. FOR ORDERS REQUESTING MALLEABLE IRON TUMBLE USE: 5658.  
 2. FOR ORDERS REQUESTING ZINC DIE CAST TUMBLER USE: 5658-X.  
 3. LOCK PACKAGE COMES FOUR TO A PACKAGE, PACKAGE PART NUMBER: 5658-82X-25 AND 5658-X82X-25.  
 4. PARTS 5646-7 AND 9X-121 TO BE SHIPPED LOOSE.

THIS DOCUMENT IS TO BE CONSIDERED VOID IF ANY OF THE FOLLOWING ARE TRUE:		DATE	BY
DATE	BY	DATE	BY
DATE	BY	DATE	BY
DATE	BY	DATE	BY

**EBERHARD MANUFACTURING CO.**  
 DIVISION OF THE EASTERN COMPANY  
 CLEVELAND, OHIO 44116-9112

**TWO POINT DEAD BOLT LOCK ASSEMBLY**

PART NUMBER: 5658/5658-X

SUPERSEDES DRAWING 5658/5658-X, DATED 8-26-02.

C:\Working\_Folder\Amech\Prod\5658\5658.dwg