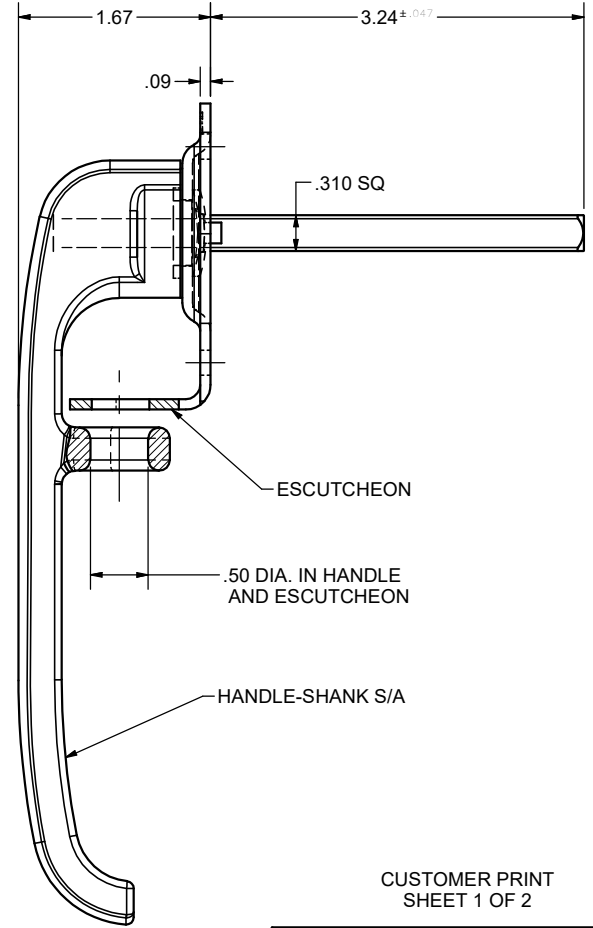
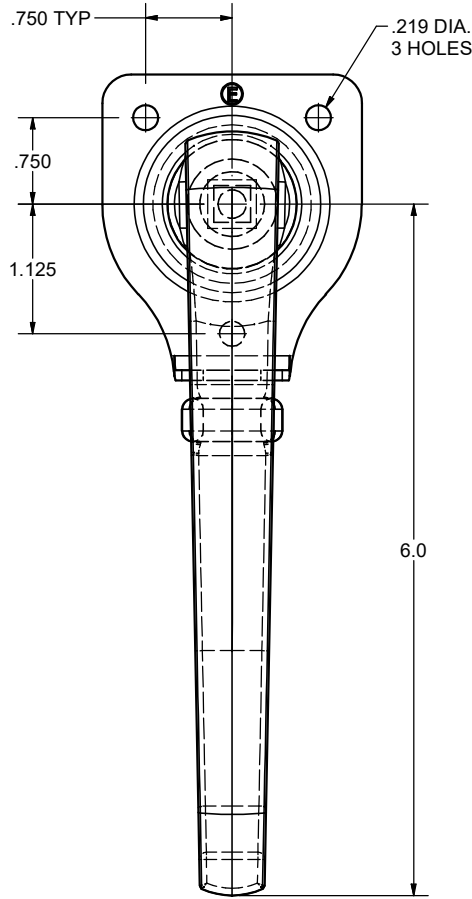
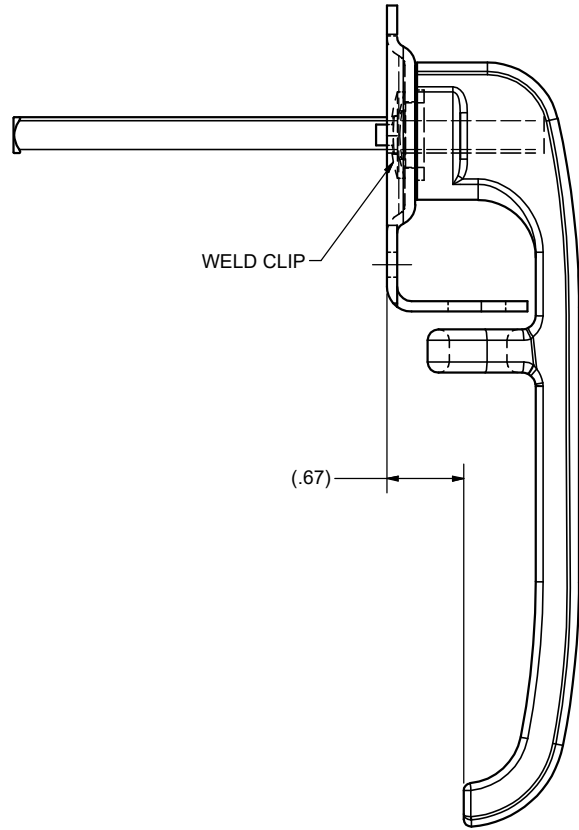


CONFIDENTIAL NOTICE: This drawing and the designs, specifications and engineering information disclosed hereon are the property of Eberhard Manufacturing Company and are not to be disseminated or reproduced without express written consent. The drawing is loaned in confidence and then only for consideration of the matter disclosed hereon. In accepting loan of this drawing, recipient agrees to keep it and the matter disclosed hereon in confidence and not to use nor permit their use in any way detrimental to Eberhard Manufacturing Company, Division of the Eastern Company, 21944 Drake Road, Cleveland, Ohio 44149-9712 © 2020 EBERHARD MFG. CO.

REVISION HISTORY					
REV	DESCRIPTION	EN	DATE	REV. BY	APVD BY
	RELEASED TO PRODUCTION: SHEET 1 RELEASED	5962	8/7/2020	KAB	MR

D
C
B
A

D
C
B
A



NOTE: FINISH:
A. POLISHED STAINLESS (10)
B. UNPOLISHED PASTIVATE (22)

SUPERSEDES DRAWING 5655-SSX DATED 2-7-92.

THIS DOCUMENT IS IN ACCORDANCE WITH	
4340C, Y14.1E-2000	DATE: 8/17/2012
UNLESS OTHERWISE SPECIFIED TOLERANCES ARE AS FOLLOWS:	
IN	MM
ANGLES: ± 2°	± 2°
2 PLACE DEC.: ± .03	± .76
3 PLACE DEC.: ± .015	± .38
ALL HOLES: ± .015	± .38

EBERHARD MANUFACTURING CO. DIVISION OF THE EASTERN COMPANY CLEVELAND, OHIO 44149-9712	
PADLOCK TYPE DROP HANDLE ASSEMBLY	
MATERIAL: -----	PART NUMBER: 5655-SSX

4

3

2

1

C:\Working_Folder\Archive\Pro\5655\5655-SSX.sh1.dwg