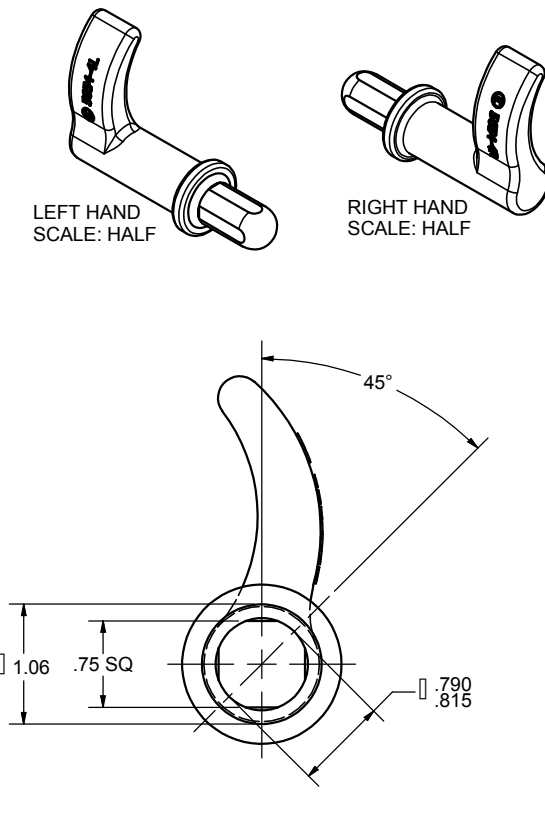


REVISION HISTORY					
REV	DESCRIPTION	EN	DATE	REV BY	APVD BY
	CONVERTED TO 3D	5653	5-9-14	FLP	MR



**EBERHARD MANUFACTURING CO.**  
DIVISION OF  
**THE EASTERN COMPANY**  
CLEVELAND, OHIO 44149-9712

THIS DOCUMENT IS IN ACCORDANCE WITH ASME Y14.15-2009		THE EASTERN COMPANY CLEVELAND, OHIO 44149-9712	
LINEAR MEASURE INCH		DATE 5/9/2014	NAME
UNLESS OTHERWISE SPECIFIED TOLERANCES ARE AS FOLLOWS:		DR BY FLP	CAM
IN MM		SCALE FULL	
ANGLES:	<div> <div>∠ 20</div> <div>∠ 20</div> </div>	CHK BY	
2 PLACE DEC:	<div> <div>∠ .03</div> <div>∠ .76</div> </div>		
3 PLACE DEC:	<div> <div>∠ .015</div> <div>∠ .38</div> </div>	MATERIAL SAE #1020 OR Q235 STEEL FORGING	PART NUMBER 5654-4R/L
1/16 HOLER:	<div> <div>∠ .005</div> <div>∠ .33</div> </div>		

C:\Working\_Folder\Archive\Pro\5\56XX\5654-4R\_L.idw