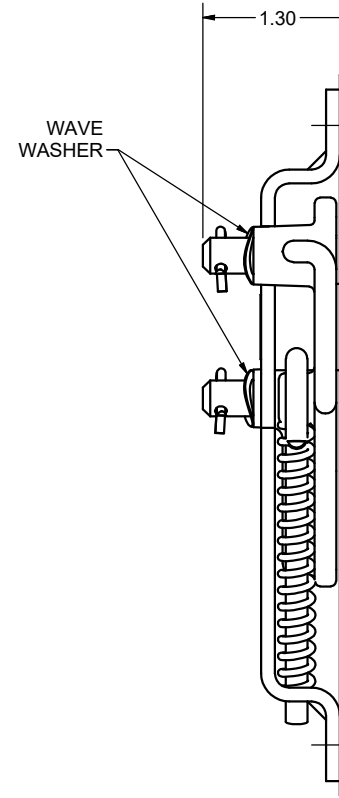
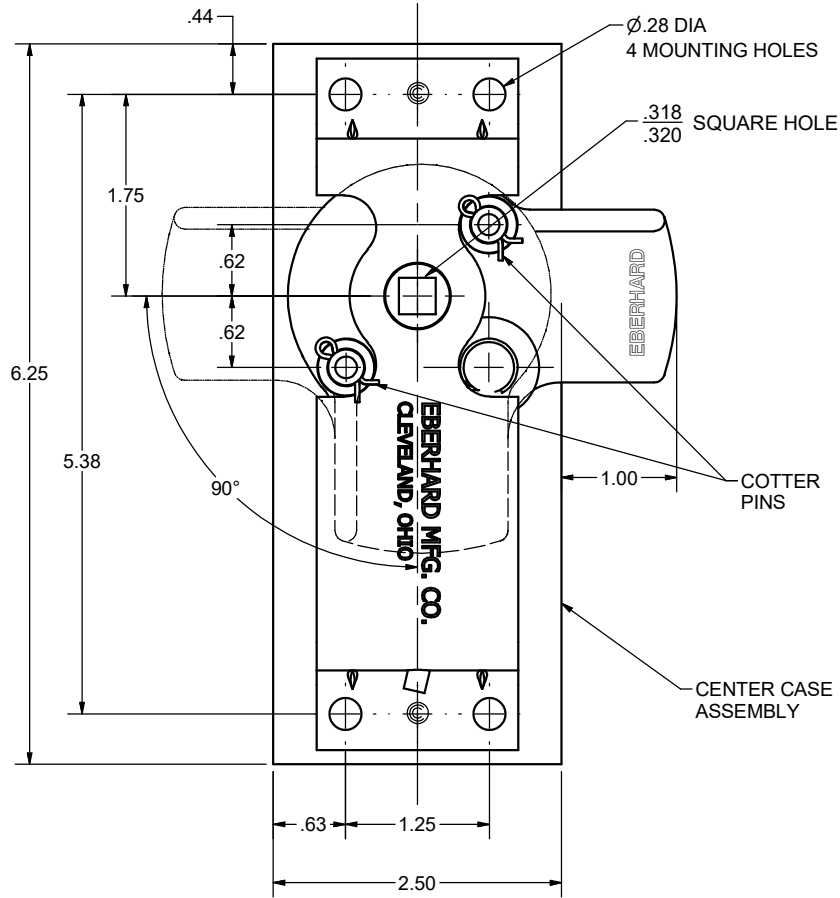


CONFIDENTIAL NOTICE: This drawing and the designs, specifications and engineering information disclosed hereon are the property of Eberhard Manufacturing Company and are not to be disseminated or reproduced without express written consent. The drawing is loaned in confidence and then only for consideration of the matter disclosed hereon. In accepting loan of this drawing, recipient agrees to keep it and the matter disclosed hereon in confidence and not to use nor permit their use in any way detrimental to Eberhard Manufacturing Company, Division of the Eastern Company, 21944 Drake Road, Cleveland, Ohio 44149-9712 © 2012 EBERHARD MFG. CO.

REVISION HISTORY			
REV	DESCRIPTION	EN	DATE
1	REVISED, REDRAWN AND CONVERTED TO 3D	5580	11-16-12



- NOTES:
 1. CENTER CASE AND SEALED POLY BAG CONTAINING SPRING WASHERS AND COTTER PINS SUPPLIED AS A UNIT, 5647-50XU, SHIPPED LOOSE.
 2. CENTER CASE SPRING RATE 48.17 IN/LBS.

SUPERSEDES DRAWING 5647-50XU DATED 6-14-05

THIS DOCUMENT IS IN ACCORDANCE WITH		DATE
4346, Y14.1E-2009		11/16/2012
UNLESS OTHERWISE SPECIFIED TOLERANCES ARE AS FOLLOWS:		DESIGN
	$\frac{IN}{MM}$	FLP
ANGLES:	$\pm 2^\circ$ $\pm 2^\circ$	SCALE
2 PLACE DEC.:	$\pm .03$ $\pm .76$	FULL
3 PLACE DEC.:	$\pm .015$ $\pm .38$	MATERIAL
ALL HOLE:	$\pm .015$ $\pm .38$	CHK. BY

EBERHARD MANUFACTURING CO. DIVISION OF THE EASTERN COMPANY CLEVELAND, OHIO 44149-9712	
NAME CENTER CASE ASSEMBLY	
MATERIAL -----	PART NUMBER 5647-50XU