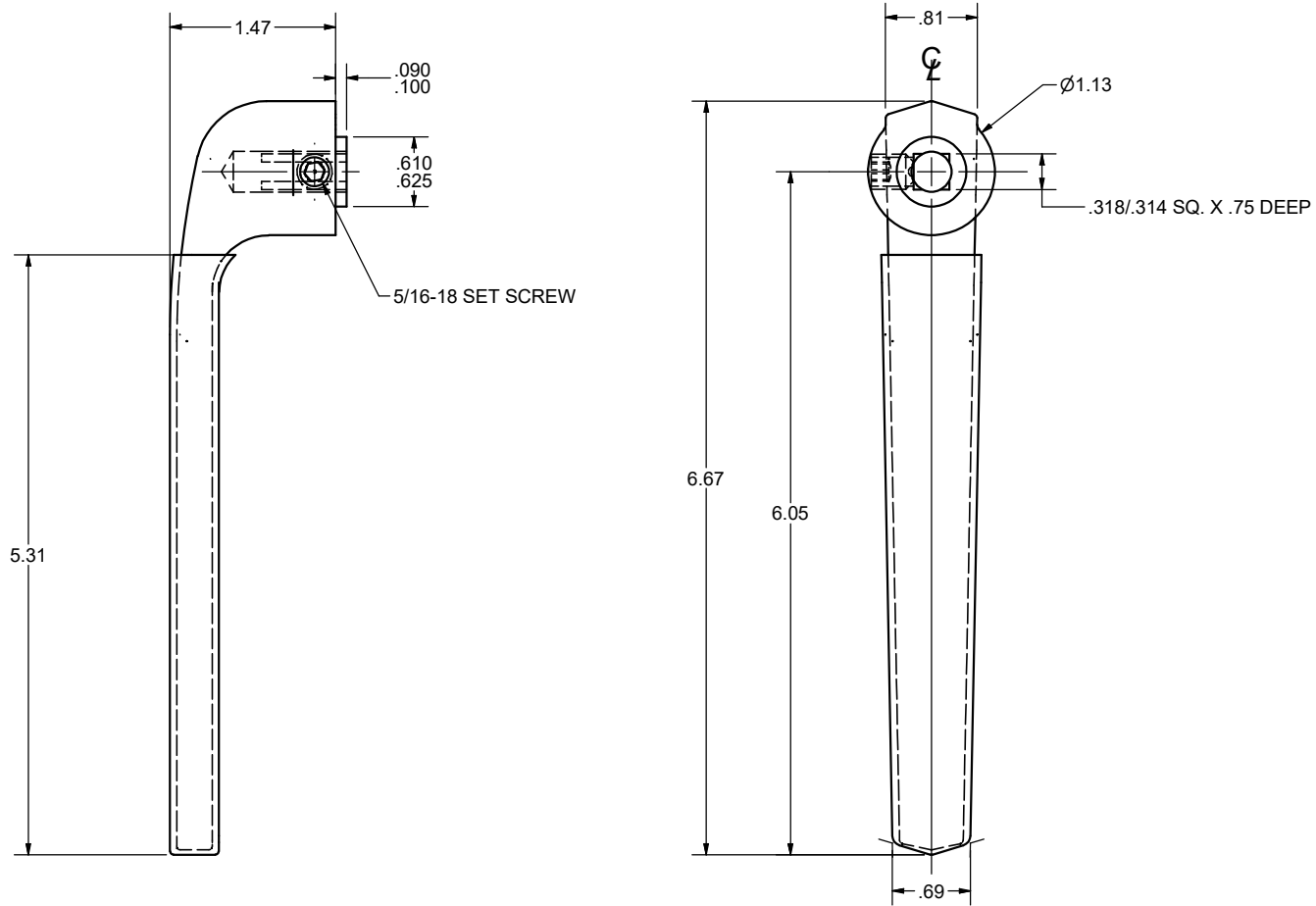


CONFIDENTIAL NOTICE: This drawing and the designs, specifications and engineering information disclosed hereon are the property of Eberhard Manufacturing Company and are not to be disseminated or reproduced without express written consent. The drawing is loaned in confidence and then only for consideration of the matter disclosed hereon. In accepting loan of this drawing, recipient agrees to keep it and the matter disclosed hereon in confidence and not to use nor permit their use in any way detrimental to Eberhard Manufacturing Company, Division of the Eastern Company, 21944 Drake Road, Cleveland, Ohio 44149-9712 © 2012 EBERHARD MFG. CO.

REVISION HISTORY			
REV	DESCRIPTION	EN	DATE
1	CONVERTED TO 3D	EN 5567	8-17-12



NOTES:

1. TOLERANCE ON ALL CAST DIMENSIONS TO BE:
+/- .031 0" TO 3", +/- .062 3" TO 12"
2. FINISH: PLASTISOL, BLACK, (.06 THICK), FC (21)
WITH CAMARO SILVER, FC (CS) WITH POLYMER HANDLE
AND TOUCH UP WITH ZRC INSIDE HOLE.

SUPERSEDES DRAWING 53S-5655 DATED 11-2-04

CUSTOMER PRINT
SHEET 1 OF 2

EBERHARD MANUFACTURING CO.
DIVISION OF
THE EASTERN COMPANY
CLEVELAND, OHIO 44149-9712

THIS DOCUMENT IS IN ACCORDANCE WITH ASME Y14.5-2009		DATE 8/17/2012
LINEAR MEASURE: INCH		DR BY FLP
UNLESS OTHERWISE SPECIFIED TOLERANCES ARE AS FOLLOWS:		SCALE FULL
ANGLES:	± 2° ± 2°	CHK BY
2 PLACE DEC.:	± .03 ± .76	
3 PLACE DEC.:	± .015 ± .38	
ALL HOLES:	± .005 ± .13	

NAME INSIDE HANDLE W/ PLASTISOL & SET SCREW	
MATERIAL GRADE 32510 MALLEABLE IRON	PART NUMBER 53S-5655