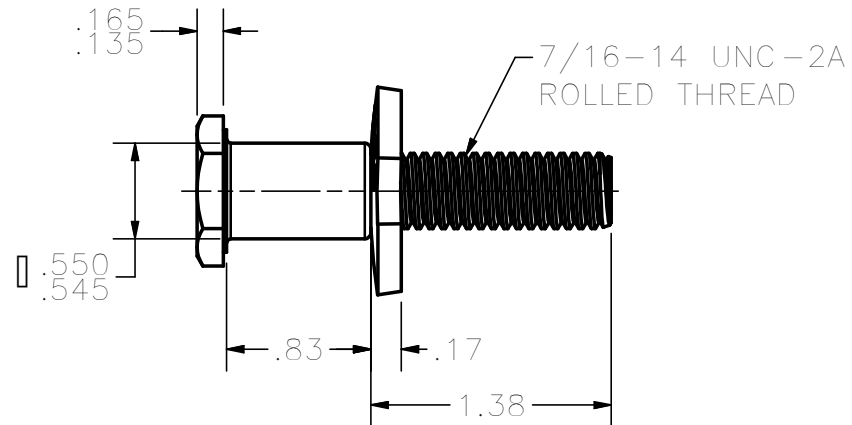
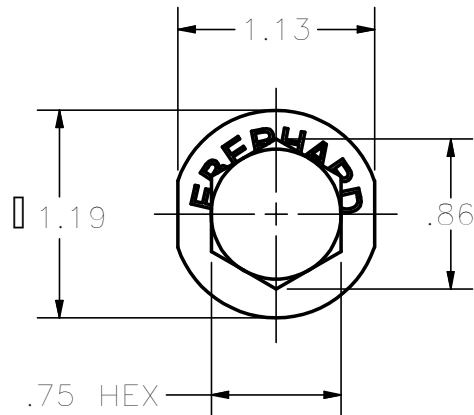
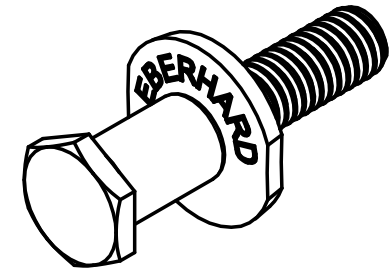


CONFIDENTIAL NOTICE: This drawing and the designs, specifications and engineering information disclosed hereon are the property of Eberhard Manufacturing Company and are not to be disseminated or reproduced without express written consent. The drawing is loaned in confidence and then only for consideration of the matter disclosed hereon. In accepting loan of this drawing, recipient agrees to keep it and the matter disclosed hereon in confidence and not to use nor permit their use in any way detrimental to Eberhard Manufacturing Company, Division of the Eastern Company, 21944 Drake Road, Cleveland, Ohio 44149-9712 © 2012 EBERHARD MFG. CO.



NOTES:

1. MATERIAL: SAE J429, GRADE 8.
2. FINISH: ZINC, FC (25)
3. INSTALLATION: TORQUE TO 45/50 FT-LBS

SUPERSEDES DRAWING 5-400-52 SHEET 1 OF 2 DATED 10-3-96.

CUSTOMER PRINT
SHEET 1 OF 2

				LINEAR MEASURE: INCH		DATE 12/21/2012		EBERHARD MANUFACTURING CO.		NAME HEX STRIKER PIN ASSEMBLY	
				UNLESS OTHERWISE SPECIFIED TOLERANCES ARE AS FOLLOWS:		DR. BY FLP		DIVISION OF THE EASTERN COMPANY CLEVELAND, OHIO 44149-9712			
				INMM		SCALE FULL					
				ANGLES: 0.200.20		CHK. BY		THIS DOCUMENT IS IN ACCORDANCE WITH ASME Y14.15-2009		MATERIAL SEE NOTE	
				2 PLACE DEC.: 0.030.76						PART NUMBER 5-400-52	
				3 PLACE DEC.: 0.0150.38							
				ALL HOLES: 0.0050.13							
REV		DESCRIPTION		EN		DATE					
		REVISED AND REDRAWN, CONVERTED TO 3D		5584		12-21-12					