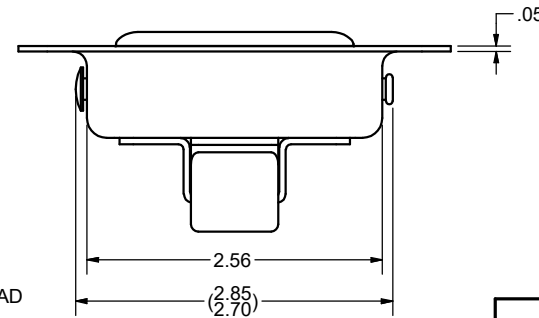
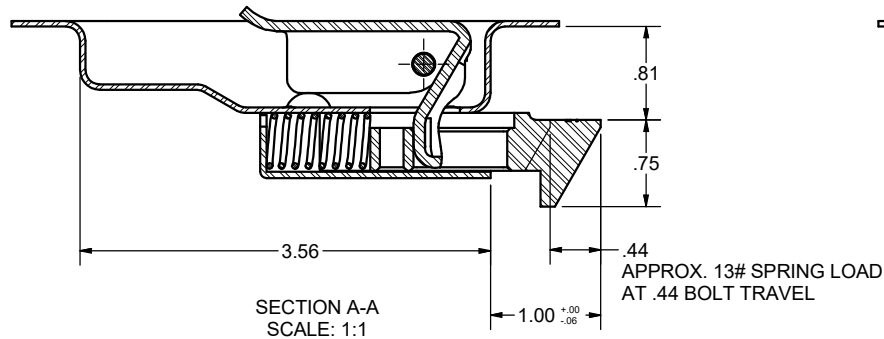
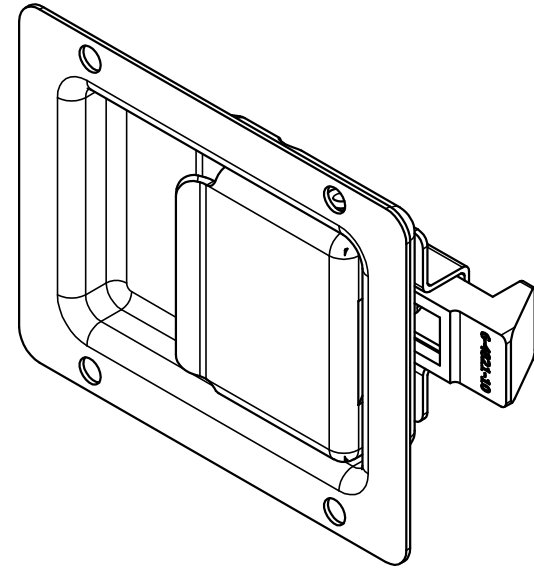
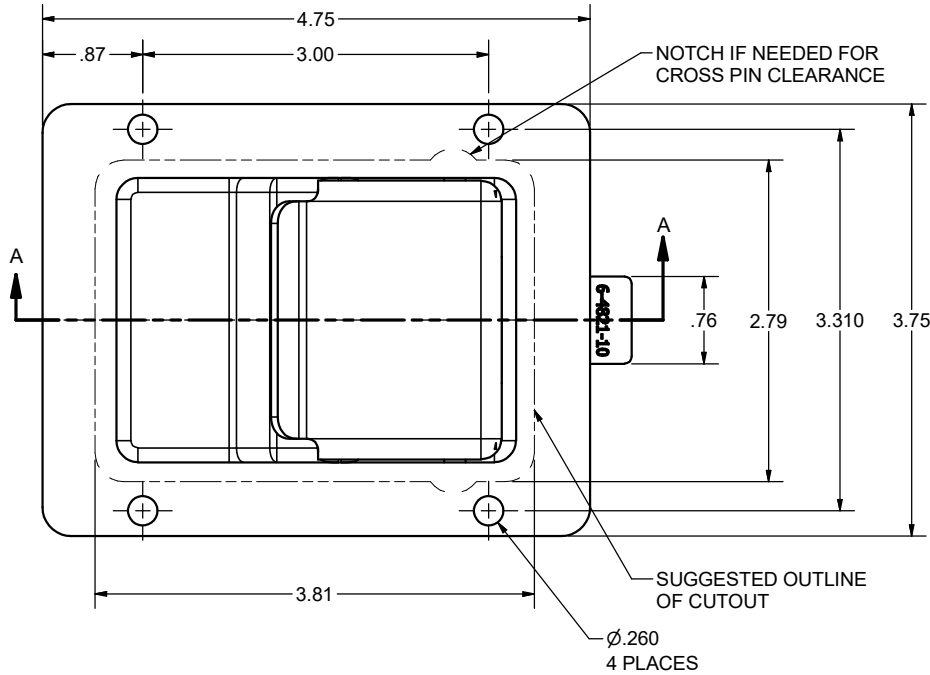


CONFIDENTIAL NOTICE: This drawing and the designs, specifications and engineering information disclosed herein are the property of Eberhard Manufacturing Company and are not to be disseminated or reproduced without express written consent. The drawing is loaned in confidence and then only for consideration of the matter disclosed herein. In accepting loan of this drawing, recipient agrees to keep it and the matter disclosed herein in confidence and not to use nor permit their use in any way detrimental to Eberhard Manufacturing Company, Division of the Eastern Company, 21944 Drake Road, Cleveland, Ohio 44149-9712 © 2016 EBERHARD MFG. CO.

REVISION HISTORY					
REV	DESCRIPTION	EN	DATE	REV BY	APVD BY
	REVISED, REDRAWN AND CONVERTED TO 3D	5751	5-6-16	FLP	MR
1	REVISED FINISH NOTE	5753	5-20-16	FLP	MR
2	REVISED FINISH NOTE	5809	6-30-17	FLP	MR



- NOTES:
- EBERHARD FINISH, (53), E-COAT AND BLACK POWDER COAT
 - SPRING RATE: 16.97 lbs./in.

SUPSEDES DRAWING 49-4820 SHEET 2 OF 2 DATED 11-29-99.

THIS DOCUMENT IS IN ACCORDANCE WITH ASME Y14.5-2009		DATE	5/6/2016
LINEAR MEASURE: INCH		DR BY	FLP
UNLESS OTHERWISE SPECIFIED TOLERANCES ARE AS FOLLOWS:		SCALE	FULL
ANGLES:	± 2° ± 2°	CHK BY	
2 PLACE DEC.:	± .03 ± .76		
3 PLACE DEC.:	± .015 ± .38		
ALL HOLES:	± .005 ± .13		

CUSTOMER PRINT SHEET 1 OF 2

EBERHARD MANUFACTURING CO.
DIVISION OF
THE EASTERN COMPANY
CLEVELAND, OHIO 44149-9712

UNIVERSAL LONG ANGLE SLAM BOLT PADDLE LOCK

MATERIAL: ----- PART NUMBER: 49-4820

C:\TEMP\d52c5e87-58d5-489a-be02-a482c2c3b4ee\Pro\44820_21_22\49-4820_SH1.icw