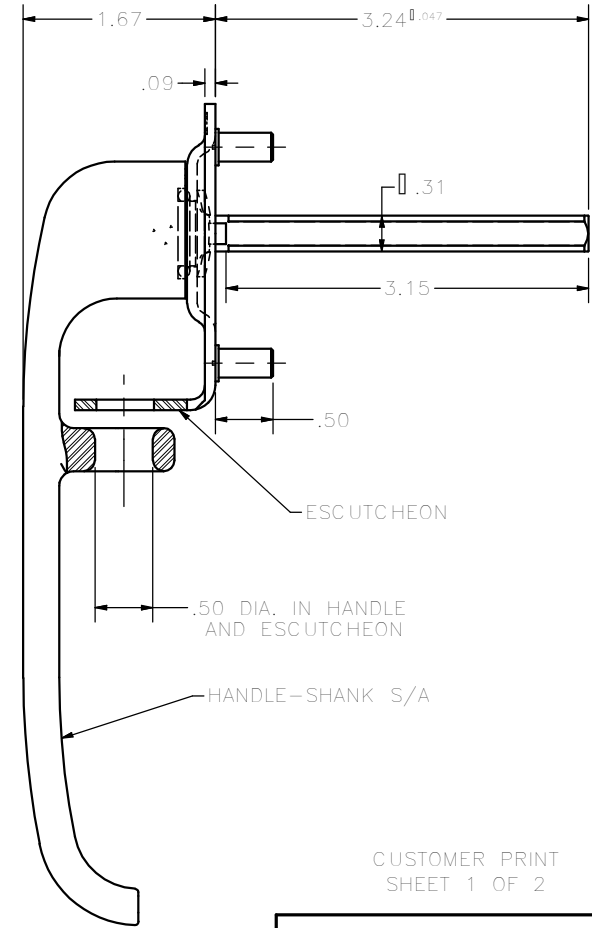
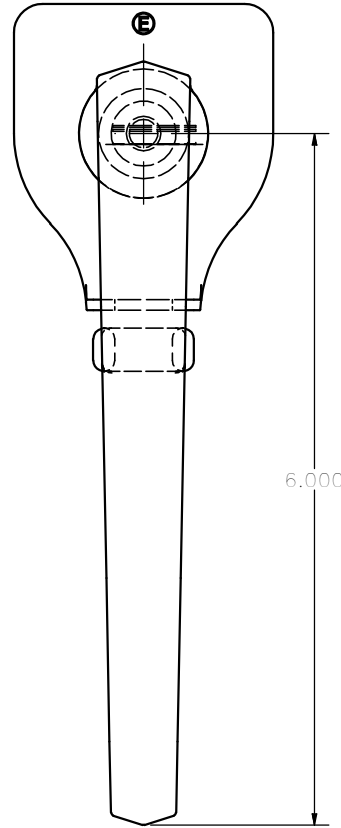
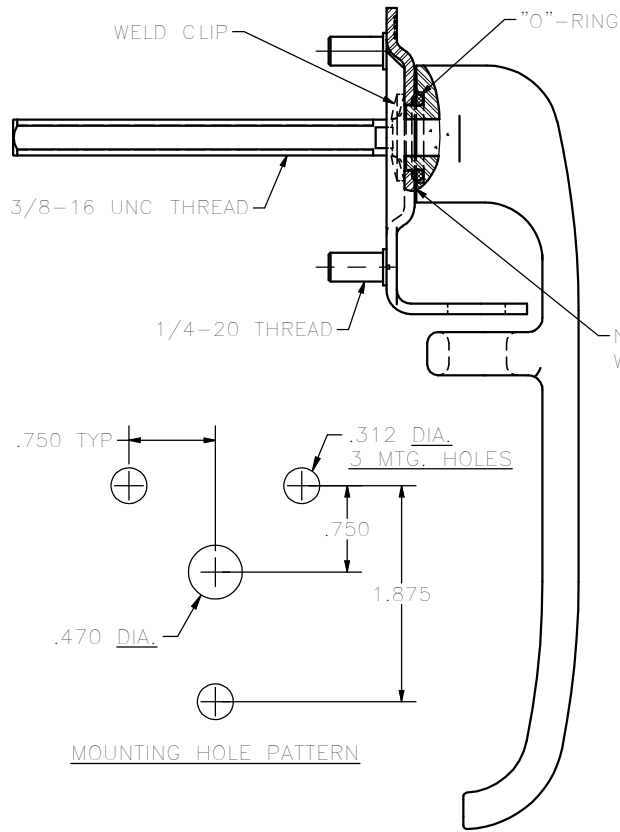


CONFIDENTIAL NOTICE: This drawing and the designs, specifications and engineering information disclosed hereon are the property of Eberhard Manufacturing Company and are not to be disseminated or reproduced without express written consent. The drawing is loaned in confidence and then only for consideration of the matter disclosed hereon. In accepting loan of this drawing, recipient agrees to keep it and the matter disclosed hereon in confidence and not to use nor permit their use in any way detrimental to Eberhard Manufacturing Company, Division of the Eastern Company, 21944 Drake Road, Cleveland, Ohio 44149-9712 © 2012 EBERHARD MFG. CO.

REVISION HISTORY			
REV	DESCRIPTION	EN	DATE
1	REVISED, REDRAWN AND CONVERTED TO 3D	5567	8-17-12
1	REVISED HANDLE FINISH: (37) WAS (07)	5617	8-16-2013



CUSTOMER PRINT
SHEET 1 OF 2

EBERHARD MANUFACTURING CO.
DIVISION OF
THE EASTERN COMPANY
CLEVELAND, OHIO 44149-9712

THIS DOCUMENT IS IN ACCORDANCE WITH		DATE
ASME Y14.15-2009		8/17/2012
UNLESS OTHERWISE SPECIFIED TOLERANCES ARE AS FOLLOWS:		DRY BY
LINEAR MEASUREMENTS:		FLP
ANGLES:	0.00 0.00	SCALE
2 PLACE DEC.:	0.03 0.76	FULL
3 PLACE DEC.:	0.015 0.38	CHK. BY
ALL HOLES:	0.015 0.25	

NAME		PART NUMBER	
PADLOCK TYPE DROP		48-5655-X	
HANDLE ASSEMBLY			

- NOTES:
1. MAX FASTENING TORQUE: 75 IN-LBS.
 2. ESCUTCHEON FINISH: (25) ELECTROPLATED ZINC
HANDLE FINISH: (37) EBERGUARD II ZINC W/ POLYMER

SUPERSEDES DRAWING 48-5655-X DATED 9-6-06