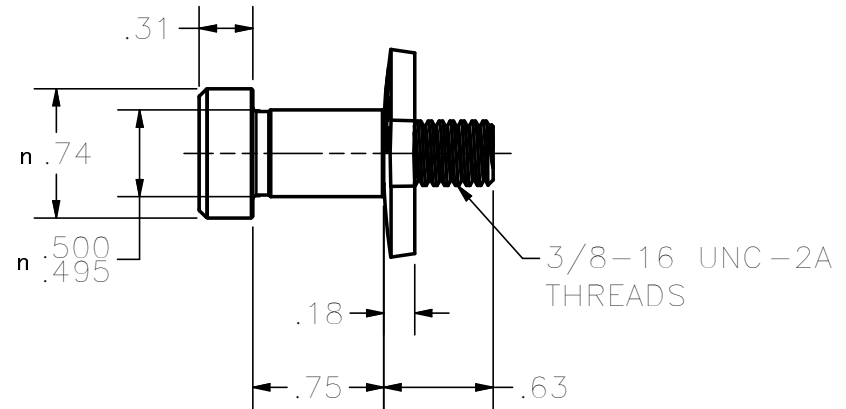
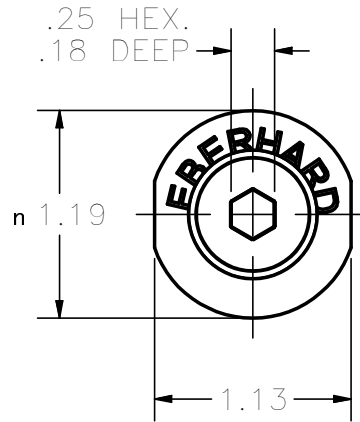


**CONFIDENTIAL NOTICE:** This drawing and the designs, specifications and engineering information disclosed hereon are the property of Eberhard Manufacturing Company and are not to be disseminated or reproduced without express written consent. The drawing is loaned in confidence and then only for consideration of the matter disclosed hereon. In accepting loan of this drawing, recipient agrees to keep it and the matter disclosed hereon in confidence and not to use nor permit their use in any way detrimental to Eberhard Manufacturing Company, Division of the Eastern Company, 21944 Drake Road, Cleveland, Ohio 44149-9712 © 2012 EBERHARD MFG. CO.

NOTES:

- 1) MATERIAL: ALLOY STEEL, GRADE 8.
- 2) FINISH: (64) ZINC WITH YELLOW CONVERTER.
- 3) INSTALLATION: TORQUE TO 45/50 Ft. Lbs.



SUPERSEDES DRAWING 475-52 SHEET 1 OF 2 DATED 3-30-2000.

CUSTOMER PRINT  
SHEET 1 OF 2

LINEAR MEASURE: INCH UNLESS OTHERWISE SPECIFIED TOLERANCES ARE AS FOLLOWS: ANGLES:            2°       2° 2 PLACE DEC.:    .03     .76 3 PLACE DEC.:    .015   .38 ALL HOLES:        .005   .13		DATE 12/11/2012	EBERHARD MANUFACTURING CO. DIVISION OF THE EASTERN COMPANY CLEVELAND, OHIO 44149-9712	NAME STRIKER PIN & WASHER SUB-ASSEMBLY		
		DR. BY SAA		MATERIAL -----	PART NUMBER 475-52	
		SCALE FULL				
REVISED AND REDRAWN, CONVERTED TO 3D EN 5583    12/14/2012		CHK. BY	THIS DOCUMENT IS IN ACCORDANCE WITH ASME Y14.15-2009			
REV	DESCRIPTION	EN	DATE			

C:\Working\_Folder\Archive\FASSTENER\STRIKERS\475-52 SH1.idw