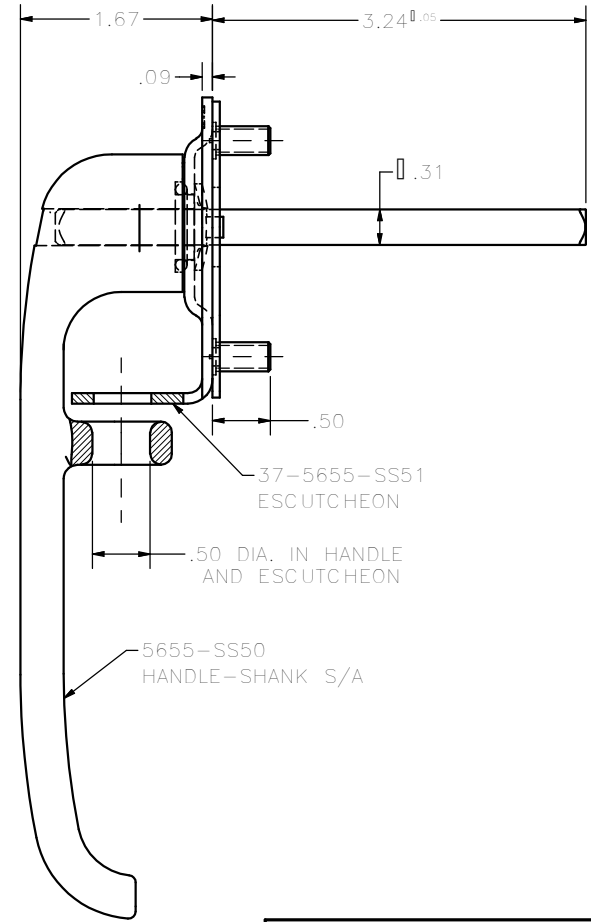
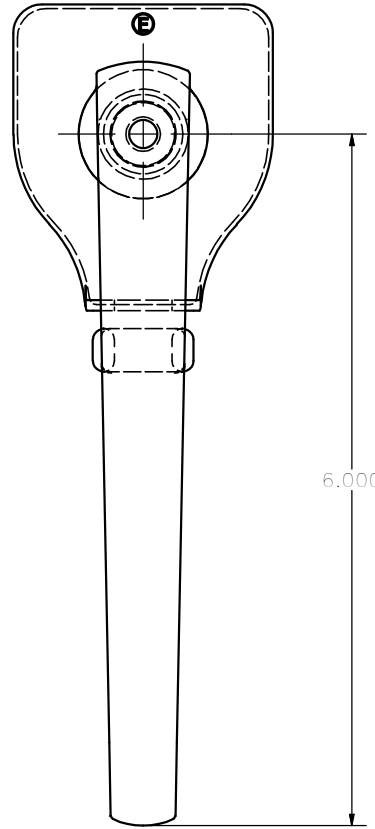
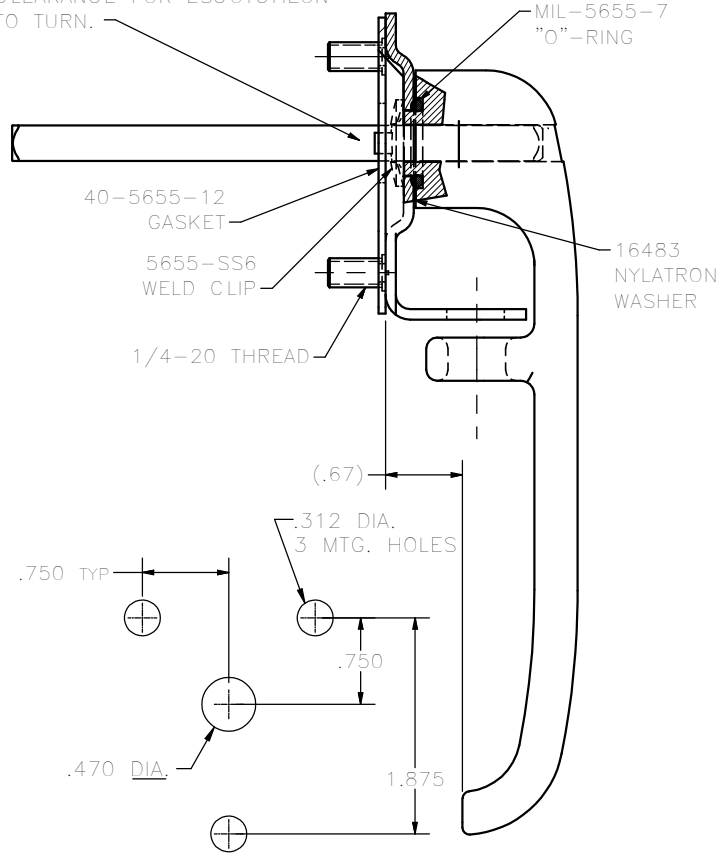


CONFIDENTIAL NOTICE: This drawing and the designs, specifications and engineering information disclosed hereon are the property of Eberhard Manufacturing Company and are not to be disseminated or reproduced without express written consent. The drawing is loaned in confidence and then only for consideration of the matter disclosed hereon. In accepting loan of this drawing, recipient agrees to keep it and the matter disclosed hereon in confidence and not to use nor permit their use in any way detrimental to Eberhard Manufacturing Company, Division of the Eastern Company, 21944 Drake Road, Cleveland, Ohio 44149-9712 © 2012 EBERHARD MFG. CO.

REVISION HISTORY			
REV	DESCRIPTION	EN	DATE
	REVISED, REDRAWN AND CONVERTED TO 3D	5567	8-17-12

NOTE:
FOR ASSEMBLING, ESCUTCHEON
AND RETAINING WASHER MUST BE
PLACED ON SHANK AS SHOWN.
SPOTWELD WASHER TO SHANK IN
TWO PLACES ALLOWING ENOUGH
CLEARANCE FOR ESCUTCHEON
TO TURN.



MOUNTING HOLE PATTERN

NOTES:

1. MAX. FASTENING TORQUE: 75 IN./LBS.
2. FINISHES:
A. POLISHED STAINLESS, FC (10)
B. UNPOLISHED STAINLESS, FC (22)

SUPERSEDES DRAWING 47-5655-SSX DATED 8-26-09

THIS DOCUMENT IS IN ACCORDANCE WITH ASME Y14.15-2009		DATE 8/17/2012	
LINEAR MEASURE: INCH		PART NAME	
UNLESS OTHERWISE SPECIFIED TOLERANCES ARE AS FOLLOWS:		DRAWN BY FLP	
ANGLES:	0° 0' 0" 0° 0' 0"	SCALE FULL	
2 PLACE DEC.:	0 .03 0 .76	MATERIAL	
3 PLACE DEC.:	0 .015 0 .38	PART NUMBER	
ALL HOLES:	0 .015 0 .75	47-5655-SSX	
		CHK. BY	

EBERHARD MANUFACTURING CO. DIVISION OF THE EASTERN COMPANY CLEVELAND, OHIO 44149-9712	
NAME PADLOCK TYPE DROP HANDLE ASSEMBLY	
MATERIAL -----	
PART NUMBER 47-5655-SSX	