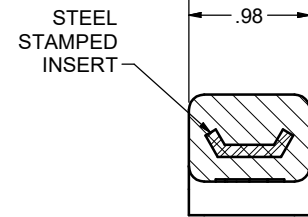
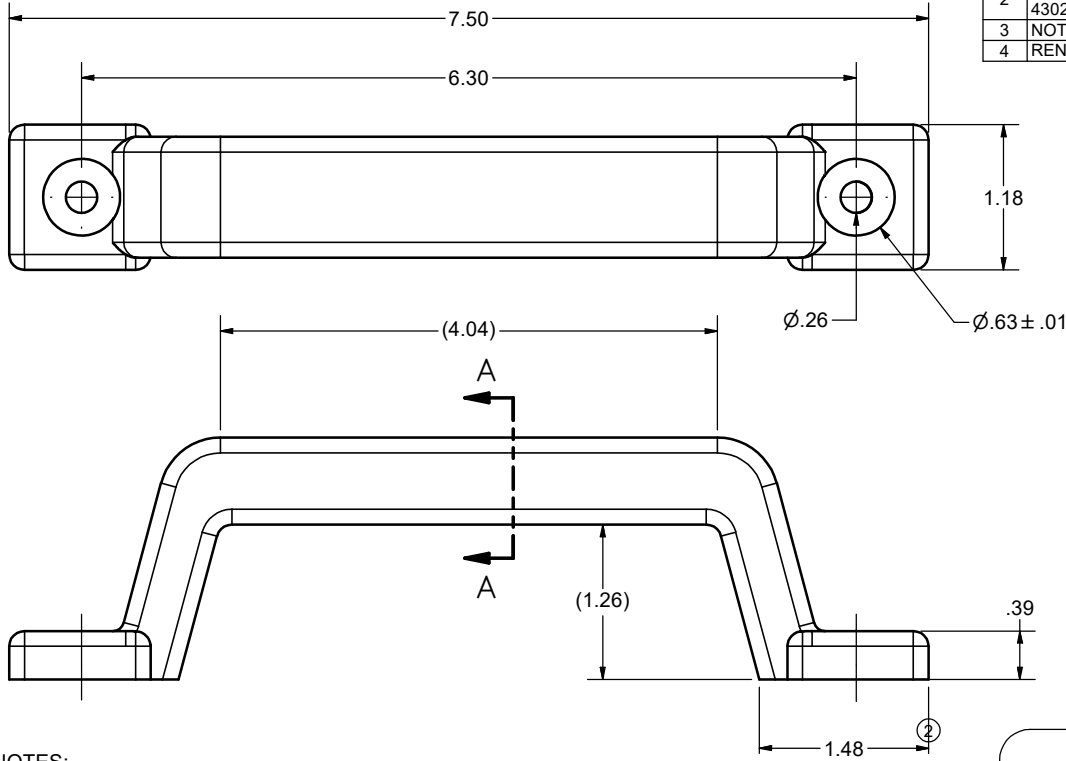


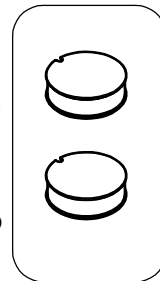
CONFIDENTIAL NOTICE: This drawing and the designs, specifications, and engineering information hereon are the property of Eberhard Manufacturing Company and are not to be disseminated or reproduced without express written consent. This drawing is loaned in confidence and then only for the consideration of the matter disclosed hereon. In accepting loan of this drawing, recipient agrees to keep it and the matter disclosed hereon in confidence and not to use or permit their use in any way detrimental to Eberhard Manufacturing Company, Division of The Eastern Company, 21944 Drake Road, Cleveland, Ohio, 44149-9712 © 2019 EBERHARD MFG. CO.

REVISION HISTORY					
REV	DESCRIPTION	EN	DATE	REV BY	APVD BY
	RELEASED	5431	12-4-09		
1	ADDED FINISH NOTE	5585	01-04-13		
2	REMOVED VIEW, REVISED NOTE, ADDED NOTE, HOLE PACKAGE, 1.48, 4302/PK WAS 4302	5776	10-28-16	FLP	MR
3	NOTE ADDED FOR FASTENER TYPE TO BE USED WITH HOLE PLUGS.	5780	12/2/2016	KAB	MR
4	RENUMBER NOTES, ADD NOTE 2, UPDATE NOTES 5 & 6	5931	12/6/2019	VRB	MR



SECTION A-A
SCALE 1 : 1

- NOTES:
- ② 1. INTEGRAL TPU FOAM MOLDED AROUND STEEL CORE
 - 2. "UV" STABILIZED
 - 3. MEETS 250LB MINIMUM LOAD STRENGTH REQUIREMENT AS STATED IN 49 CFR 399.201-399.211 MEETS FMVSS 302
 - ① 4. EBERHARD FINISHES:
(MB) MATTE BLACK
(SY) SAFETY YELLOW
 - ④ ③ 5. INSTALLATION NOTE: HOLE PLUGS TO BE USED WITH A BUTTON HEAD FASTNER IN ORDER TO BE FLUSH WHEN INSTALLED.
 - ④ ② 6. KIT P/N's WITH PLUGS:
ORDER 4302-PK-MB FOR BLACK HANDLE AND HOLE PLUGS.
ORDER 4302-PK-SY FOR YELLOW HANDLE AND HOLE PLUGS.



② HOLE PLUG PACKAGE

CUSTOMER PRINT
SHEET 1 OF 2

EBERHARD MANUFACTURING CO.
DIVISION OF
THE EASTERN COMPANY
CLEVELAND, OH 44149-9712

THIS DOCUMENT IS IN ACCORDANCE WITH ASME Y14.5-2009			DATE	NAME
UNLESS OTHERWISE SPECIFIED TOLERANCES ARE AS FOLLOWS:			12/3/2009	DWN. BY jmaxwell
ANGLES:	± 2°	± 2°	SCALE	MATERIAL
2 PLACE DEC.:	± .03	± .76	1 : 1	PART NUMBER
3 PLACE DEC.:	± .015	± .38	CHK. BY	SEE NOTE
ALL HOLES:	± .005	± .13	MR	4302